

Premium-class apartments on the first line of the sea in Kargicak area (002268)



260 000 € - 280 000 €

-  Floor area **62 m²**
-  Number of rooms **1 bedroom**
-  Furnitures **Partly**
-  To the beach: **100 m**
-  Location: **Turkey, Alanya, Kargicak**
-  To the airport: **30 km**

 To the city
centre:

14 km

Options

- ✓ Sea view
- ✓ Mountain view
- ✓ View of the city
- ✓ Balcony/ Terrace
- ✓ Swimming pool
- ✓ Beachfront
- ✓ Playground
- ✓ Generator

Description

A stunning premium residential complex is in the most comfortable and ecologically clean area of Alanya - Kargicak. The amazing atmosphere of the seacoast is relaxed and peaceful, filled with the contemplation of all shades of azure. A light breeze will bring freshness and coolness on hot summer days.

A mix of the purest mountain and sea air, with a hint of citrus orchards, magnificent panoramic views of the Mediterranean sunsets and sunrises, landscapes of the Taurus Mountains, and the alluring evening lights of the famous Alanya fortress. A place where you will get the actual pleasure of living a measured life with comfort, convenience, and safety!

The infrastructure of a 5-star hotel and some social privileges for owners allow you to enjoy luxury at any time of the year, spend more time with your family and lead a healthy lifestyle on the territory of the complex:

- 2 outdoor pools (for penthouses)
- outdoor pool with water slides

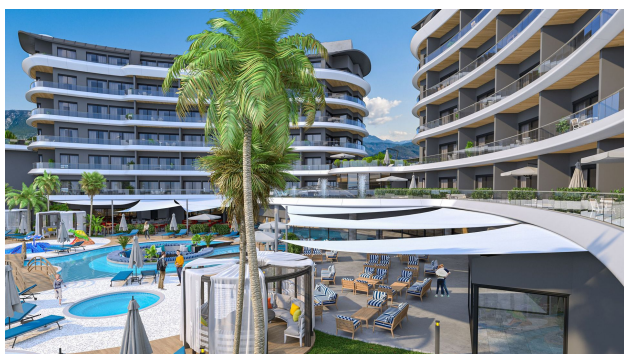
- pool bar
- Children's swimming pool
- indoor pool
- SPA-center
- Turkish bath (hammam) - 2 rooms
- sauna
- Roman steam room
- massage rooms
- rest zone
- gym
- playground for children
- playroom for children
- cinema
- Cafe
- music room
- karaoke
- TV room
- table tennis
- billiards Russian and American
- mini golf
- landscaped garden
- barbecue area
- lounge area
- 9 stores (including "network" - SHOCK / BIM / A101)
- security 24 hours
- video surveillance system
- outdoor parking
- covered parking for 50 cars
- 4 high-speed elevators
- uninterruptible power supply generator
- beach and cafe complex
- Management Company
- service office (transfer, bike rental, etc.)

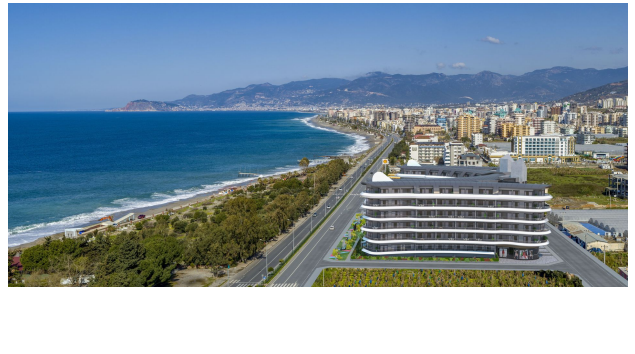
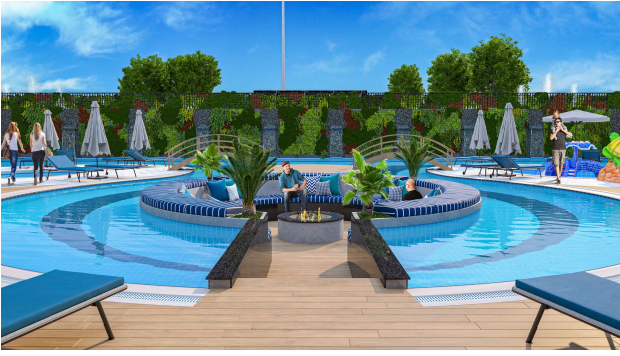
Ceiling height - 3.10 meters. A variety of layouts will allow you to choose your dream home with any view: mountain landscape, sea panorama, or night lights of Alanya.

Released in September 2021.

Updated 05.11.2024

Photo gallery



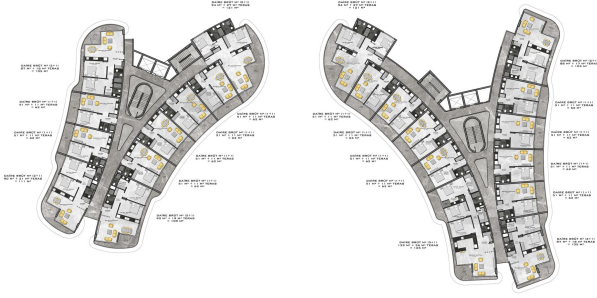




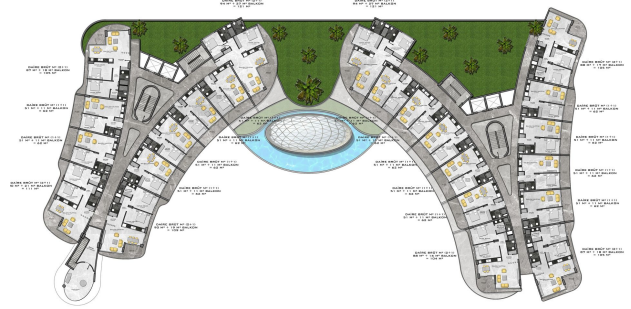




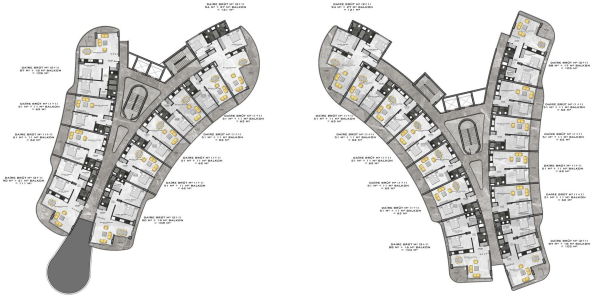
BODRUM KAT PLANI



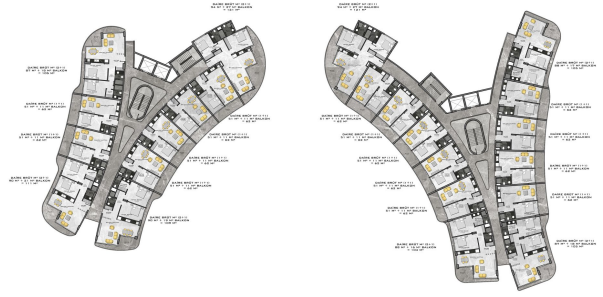
ÇATI KAT PLANI



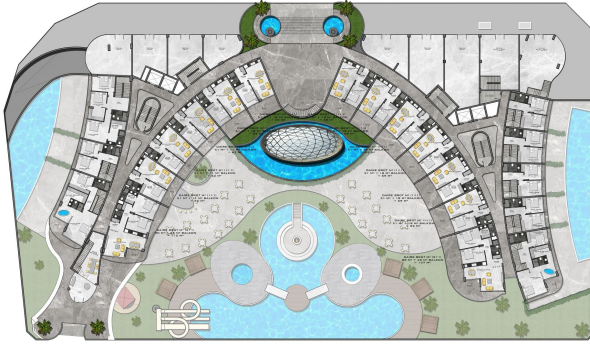
1. KAT PLANI



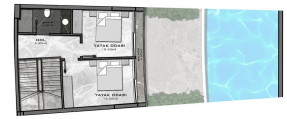
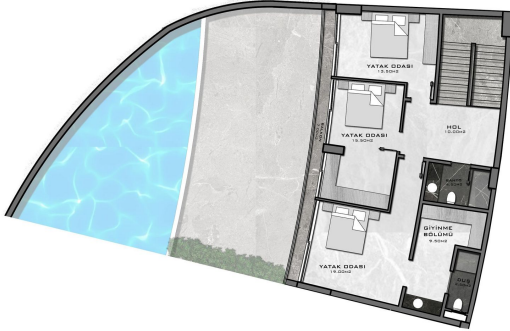
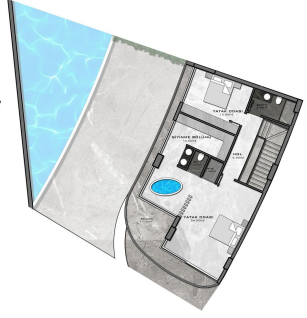
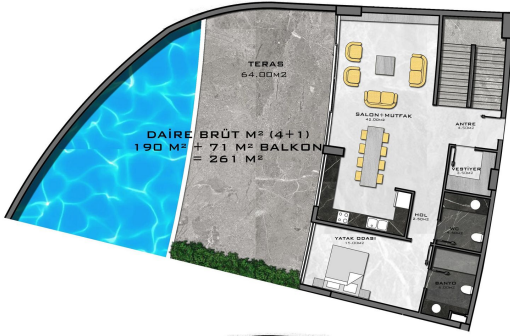
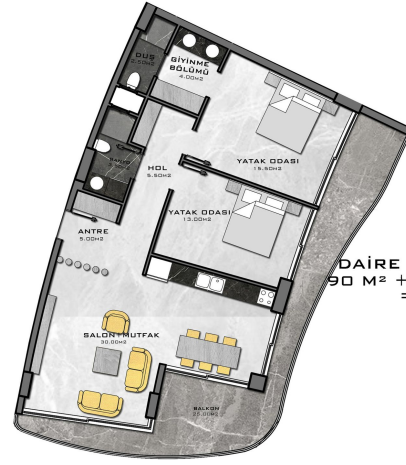
2. KAT PLANI



3. & 4. KAT PLANI



ZEMİN KAT PLANI



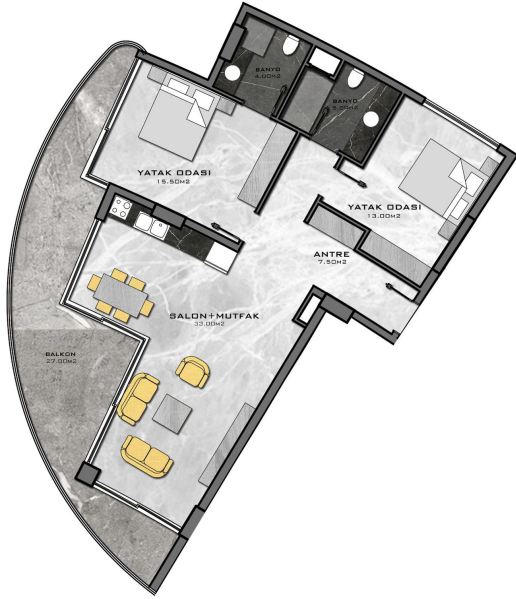
DAİRE BRÜT M² (3+1)
139 M² + 26 M² TERAS
= 165 M²



DAİRE BRÜT M² (2+1)
88 M² + 49 M² BALKON
= 137 M²



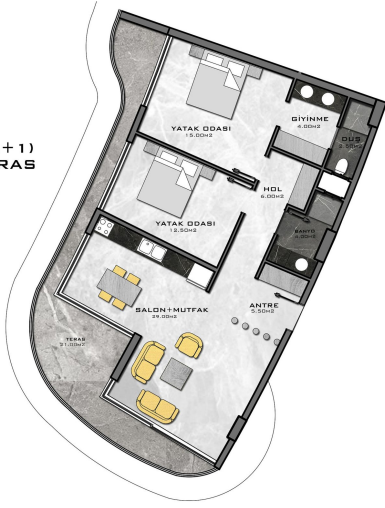
DAİRE BRÜT M² (2+1)
94 M² + 27 M² BALKON
= 121 M²



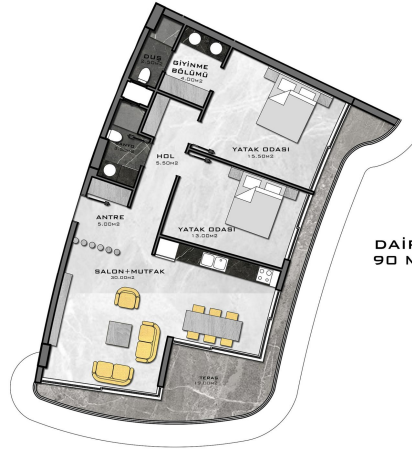
DAİRE BRÜT M² (2+1)
94 M² + 27 M² BALKON
= 121 M²



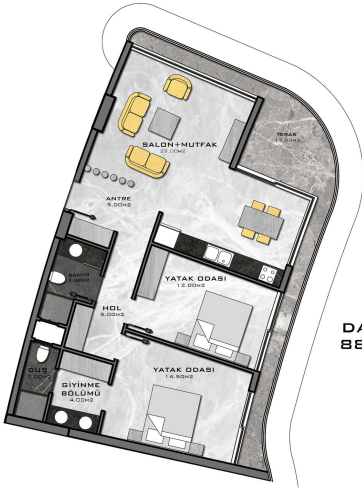
DAİRE BRÜT M² (2+1)
90 M² + 21 M² TERAS
= 111 M²



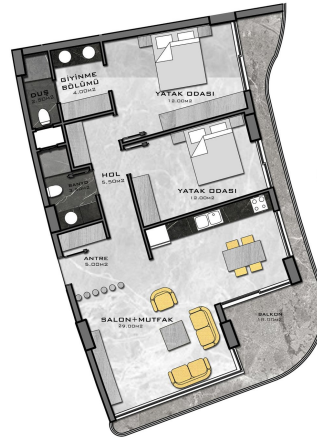
DAİRE BRÜT M² (2+1)
90 M² + 19 M² TERAS
= 109 M²



DAİRE BRÜT M² (2+1)
88 M² + 17 M² TERAS
= 105 M²



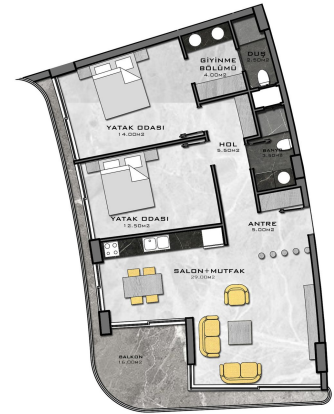
DAİRE BRÜT M² (2+1)
87 M² + 18 M² BALKON
= 105 M²



DAİRE BRÜT M² (2+1)
87 M² + 18 M² BALKON
= 105 M²



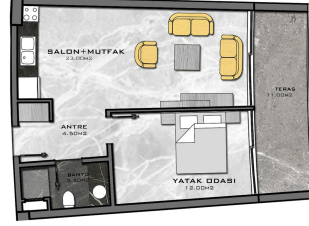
DAİRE BRÜT M² (2+1)
88 M² + 16 M² BALKON
= 104 M²



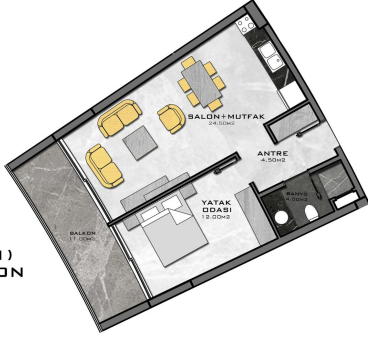
DAİRE BRÜT M² (1+1)
51 M² + 18 M² BALKON
= 69 M²



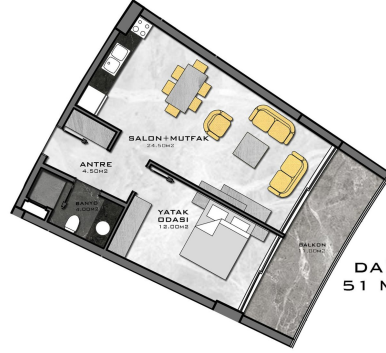
DAİRE BRÜT M² (1+1)
51 M² + 11 M² TERAS
= 62 M²



DAİRE BRÜT M² (1+1)
51 M² + 11 M² BALKON
= 62 M²

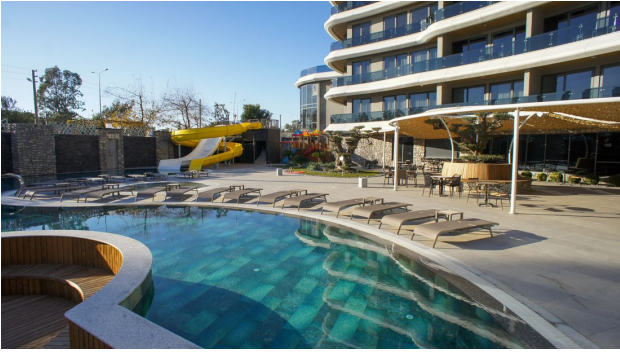
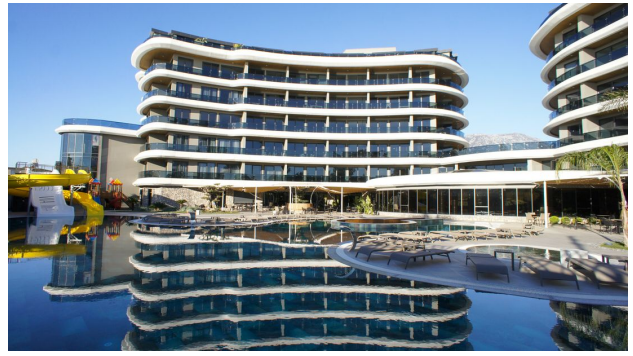


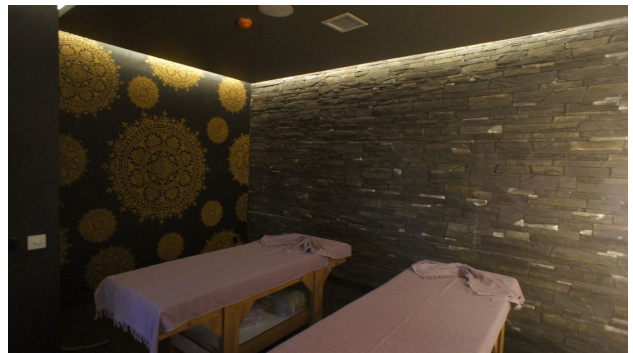
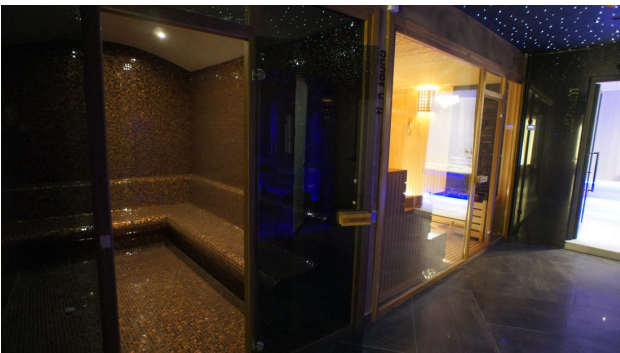
DAİRE BRÜT M² (1+1)
51 M² + 11 M² BALKON
= 62 M²



DAİRE BRÜT M² (1+1)
51 M² + 11 M² BALKON
= 62 M²









Scan the QR code to open the original page