


Apartments from a leading developer, Avsallar district (01512)



70 000 € - 330 000 €

-  Floor area **55 m² - 160 m²**
-  Number of rooms **1 bedroom**
2 bedrooms
3 bedrooms
-  Furnitures **Partly**
-  To the beach: **900 m**
-  Location: **Turkey, Alanya, Avsallar**

 To the airport: **65 km**

 To the city
centre: **23 km**

Options

- ✓ Sea view
- ✓ Mountain view
- ✓ Balcony/ Terrace
- ✓ Swimming pool
- ✓ Outdoor parking
- ✓ 0% installment
- ✓ For citizenship
- ✓ Elevator
- ✓ Playground
- ✓ Generator

Description

An investment project from a leading developer in the most picturesque place in Alanya - the Avsallar area. A cozy complex on the Mediterranean coast, surrounded by pine forests that fill the sea air with healing phytoncides. For everyone who wants to live in a comfortable complex, away from the bustle of the city and the sounds of cars, this option is for you!

Panoramic windows offer a magnificent view of the mountains, the sea, and green spaces. All blocks have a sea view: from the 1st floor in blocks A1, B1, and C, from the 6th floor in blocks A and B. To the sea and the beach - 0.9 km. Free shuttle to the beach and farmers market.

One of the best construction companies in Alanya is working on this project, so you can be sure of the safety of your investment and the high quality of your new home. There is a 0% installment plan for the entire construction period.

The project includes a closed ennobled private territory and developed infrastructure:

- Outdoor large swimming pool
- Two pools with slides
- Barbecue area
- Children's playground
- Outdoor parking
- Fitness
- Indoor winter pool
- Hammam
- Roman steam room
- Finnish sauna
- Children's playroom
- Tennis court
- Relaxation areas by the pool
- 450 parking spaces (1 parking space for 1 apartment)
- Video surveillance and security 24/7
- Entrance to the territory by cards

The internal infrastructure is located under blocks A and B1.

Specifications: antibacterial facade, noise, and moisture insulation according to European standards ISO9001, modern elevator, fire alarm system, central satellite system, security, and video surveillance.

In the apartments: steel doors with first-class security, intercom with the video system, false ceilings, and hidden spotlighting, washable paint on the walls, porcelain tiles on the floor, equipped bathrooms, European-style kitchen, double-glazed aluminum windows.

There are 450 apartments in total. Layouts:

- 1+1 - 55 m²
- 2+1 - 80 m²
- 2+1 duplex - 110 m²
- 3+1 duplex - 160 m²

The apartments will be delivered with a fine finish, ceramic flooring, spotlights, double-glazed windows, as well as kitchen furniture with granite countertops, and equipped bathrooms.

- To the center of Alanya - 23 km
- Gazipasa Airport - 65 km
- Antalya Airport - 100 km

Construction time:

- Start of construction: October 2021
- Completion of construction: December 2024

Avsallar is one of the greenest areas of Alanya, there are many pine forests around, and a delicate aroma of pine needles is felt in the air. And, as you know, phytoncide, which is actively emitted by pines, ionizes the air, kills harmful bacteria. So it will be really easy for you to breathe in the new house.

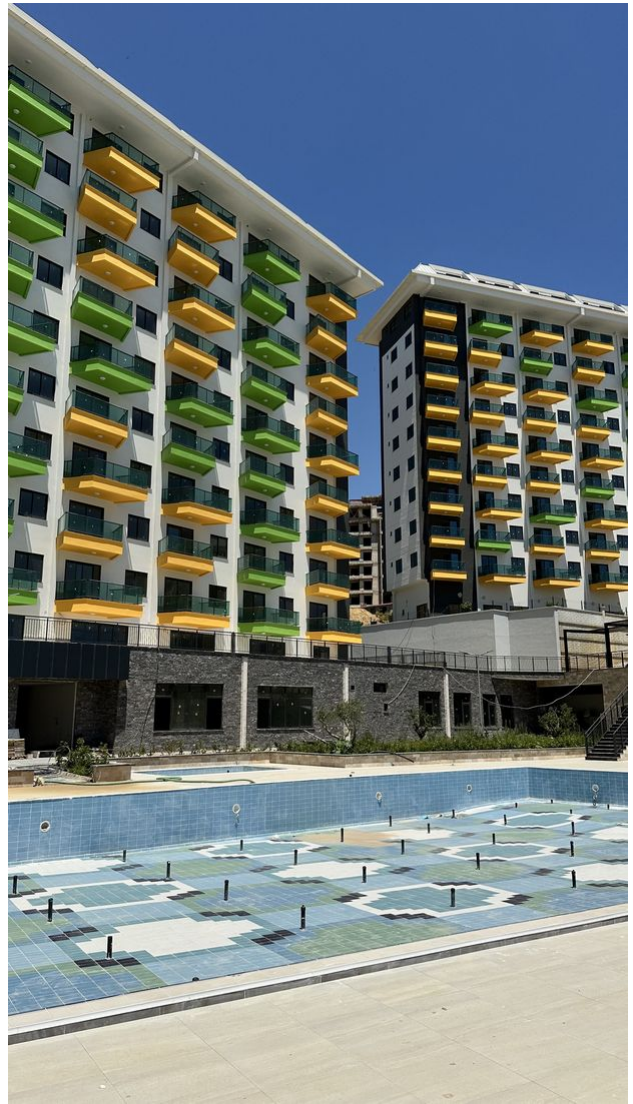
Apartments from the developer at a starting price, in a complex at the initial stage of construction with a flexible payment schedule. Now the best prices are offered for apartments, and you can also take advantage of 0% installment until the end of construction with a 30% down payment.

Additional information is available to our specialists.

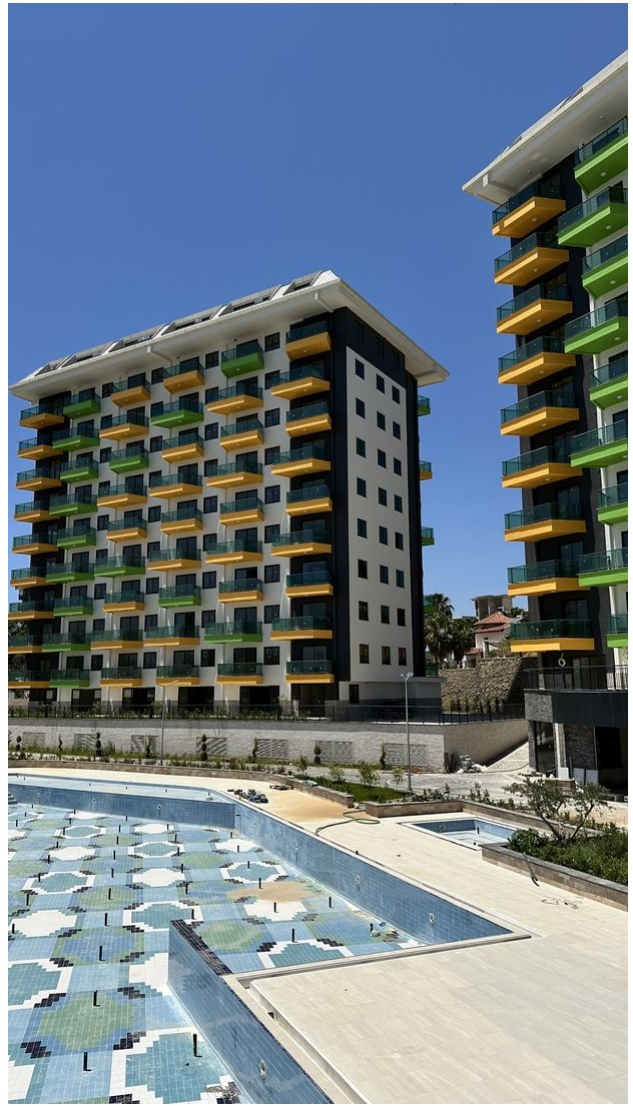
Updated: 06.05.2025

Photo gallery

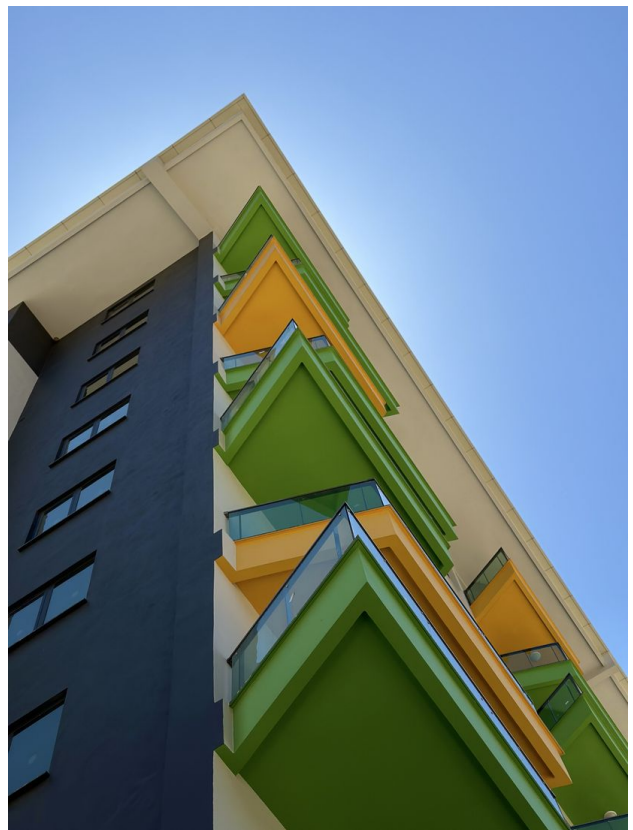
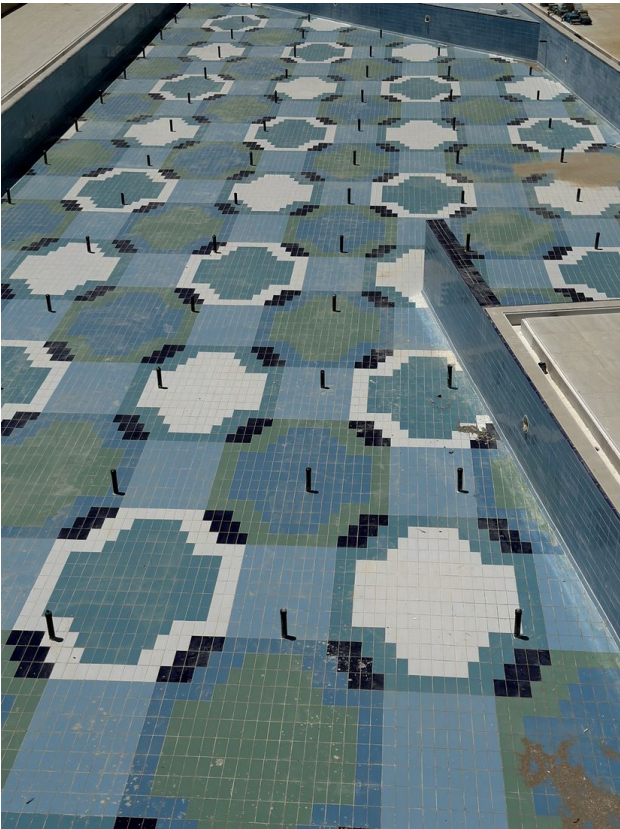


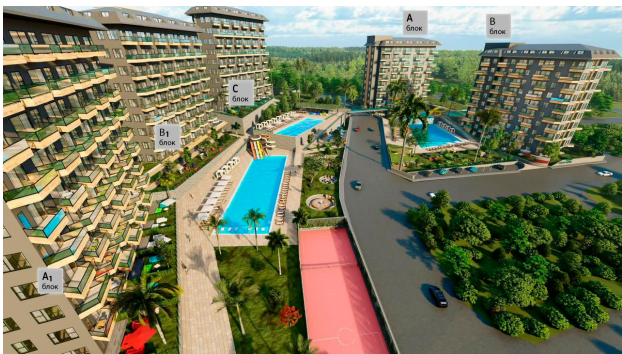
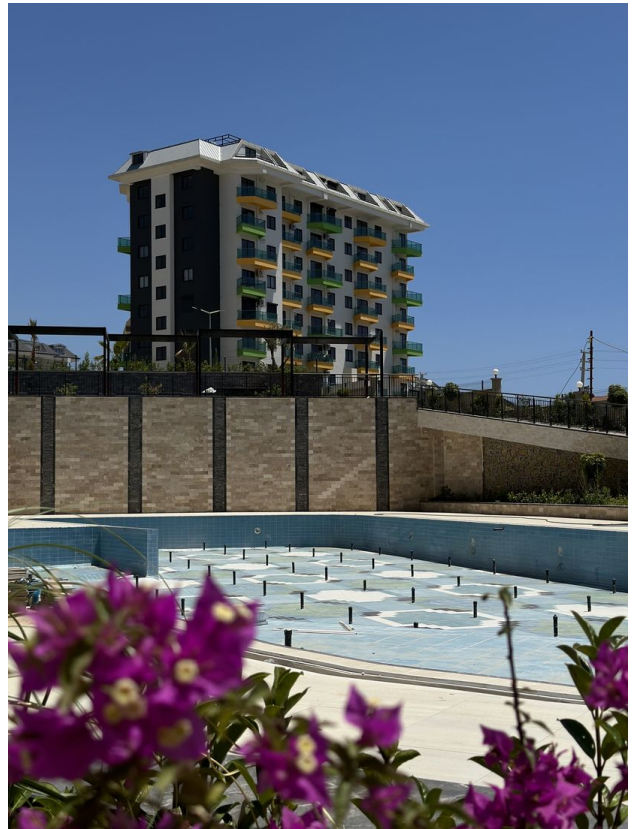
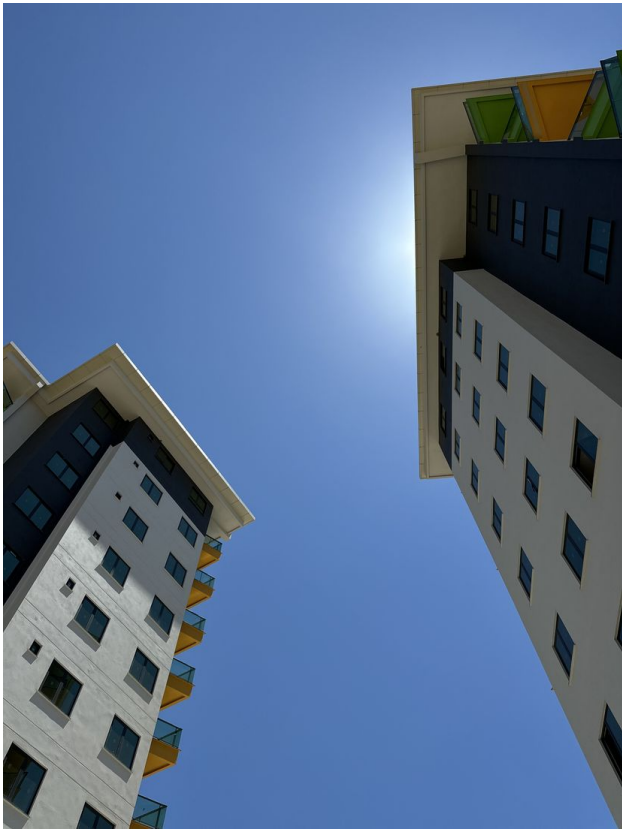




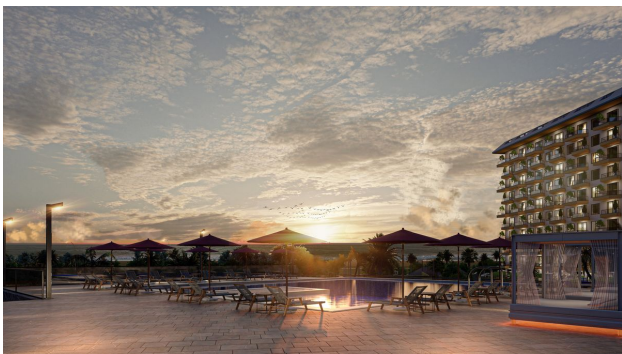




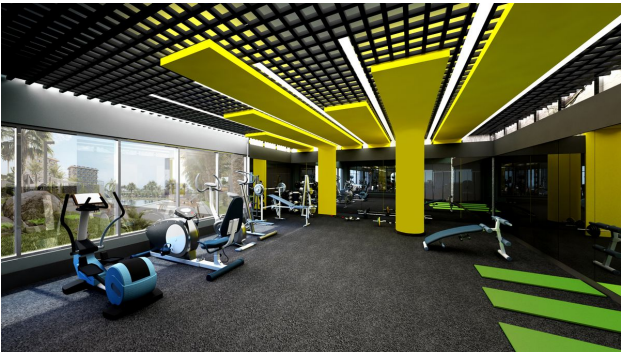






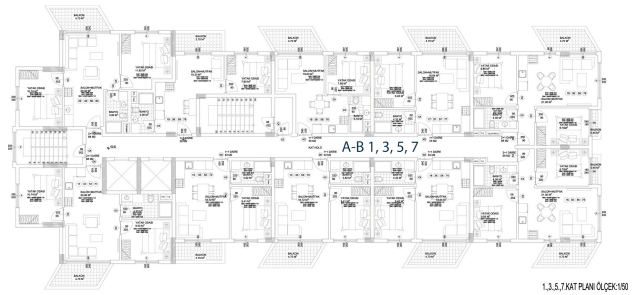




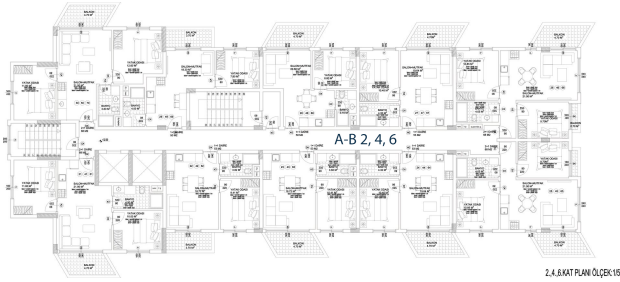




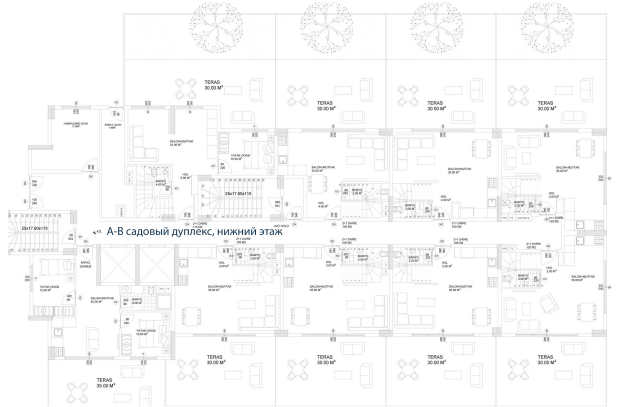




1.3.5.7 KAT PLAN ÖLÇEK 1/50



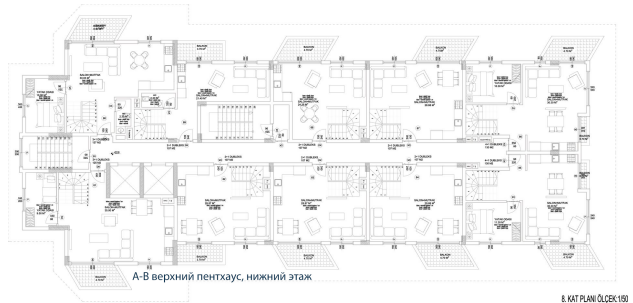
2. A. B KAT PLAN ÖLÇEK 1/50



A-B садовый дуплекс, нижний этаж



A-B садовый дуплекс, верхний этаж

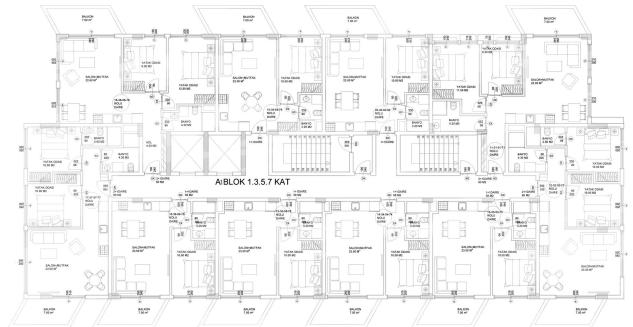


A-B верхний пентхаус, нижний этаж

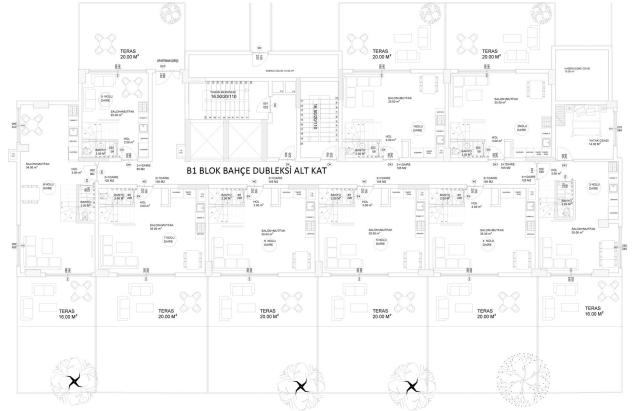
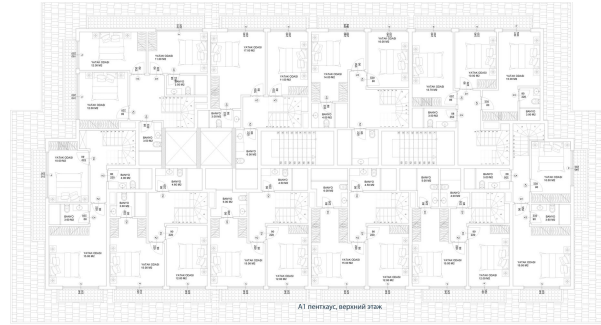
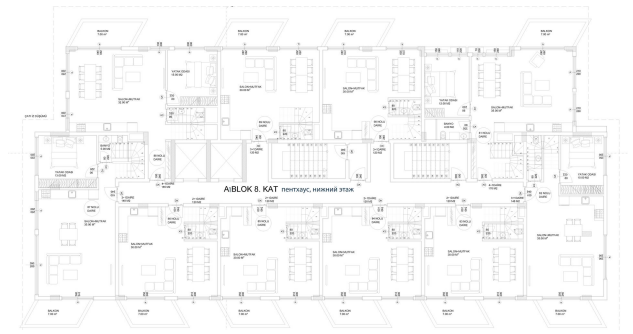
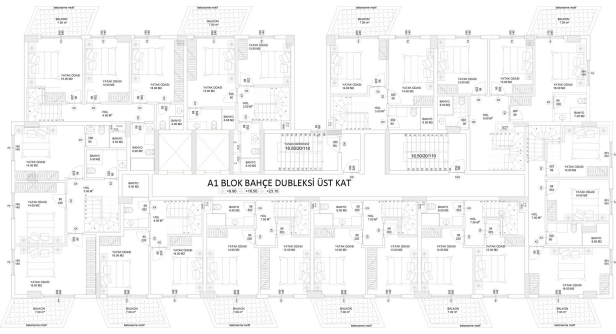
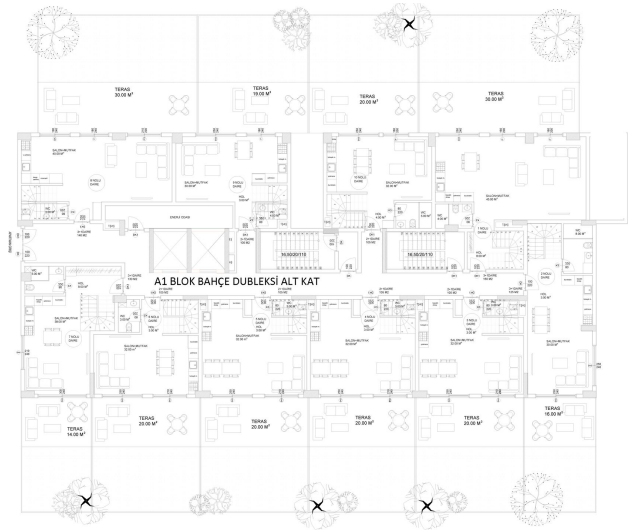
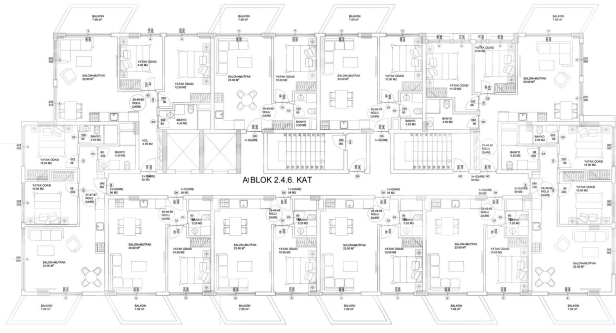
8. KAT PLAN ÖLÇEK 1/50

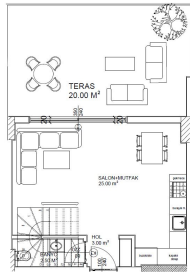
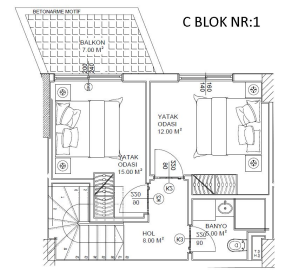
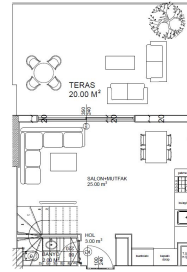
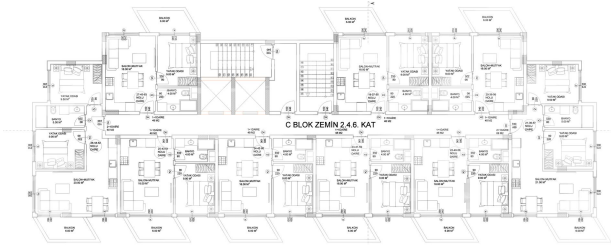
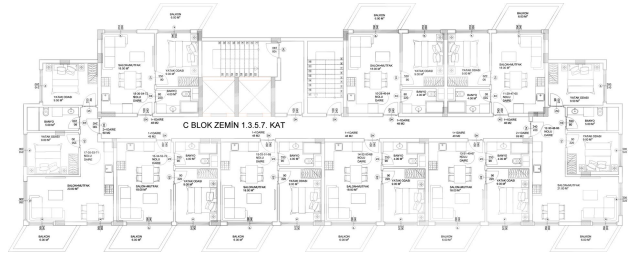
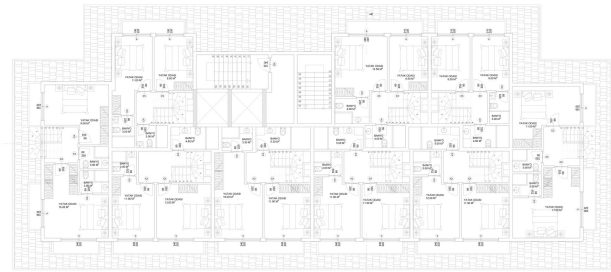
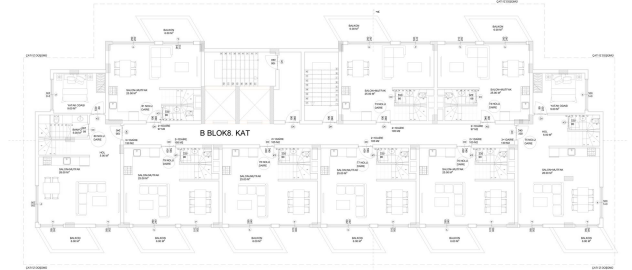
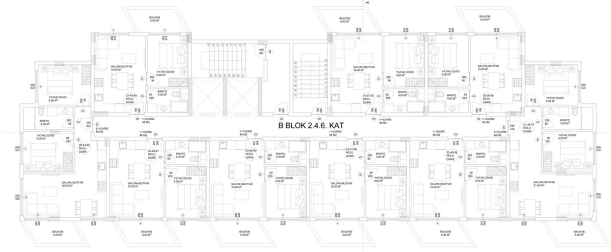
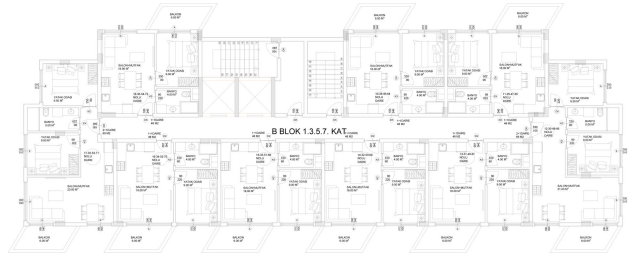
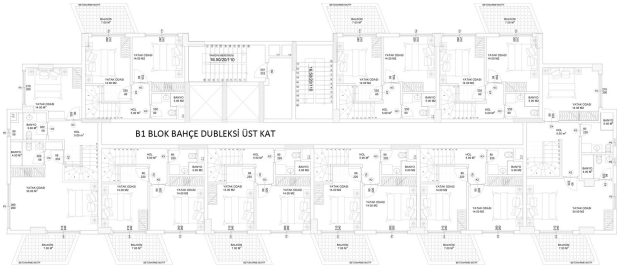


A-B верхний пентхаус, верхний этаж

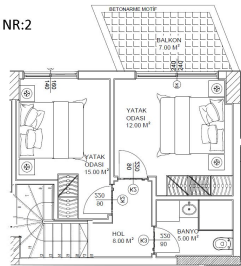


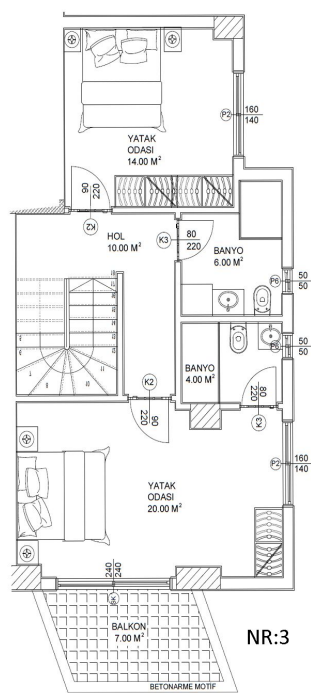
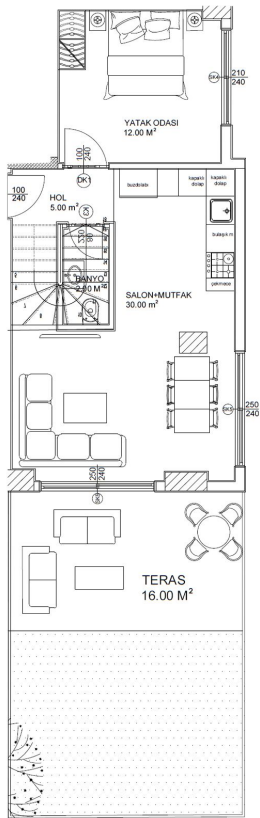
A/BLOK 1.3.5.7 KAT



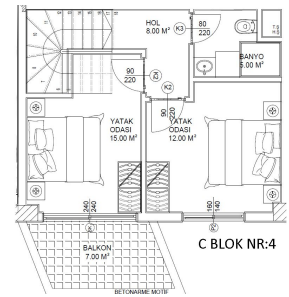
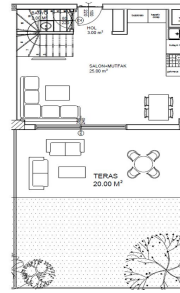


C BLOK NR:2

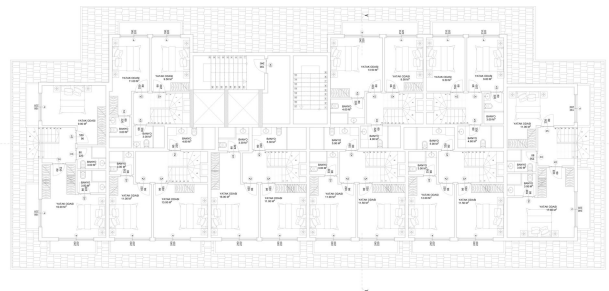
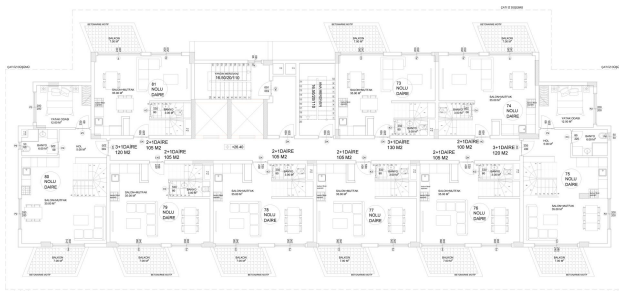




NR:3



C BLOK NR:4



Scan the QR code to open the original page