

Apartments in Alanya from the developer, Avsallar district (01257)



100 000 € - 110 000 €

-  Floor area **46 m² - 125 m²**
-  Number of rooms **1 bedroom**
2+1 penthouse
-  Furnitures **Partly**
-  To the beach: **550 m**
-  Location: **Turkey, Alanya, Avsallar**
-  To the airport: **50 km**



To the city
centre:

24 km

Options

- ✓ Balcony/ Terrace
- ✓ Swimming pool
- ✓ 0% installment
- ✓ Elevator
- ✓ Playground
- ✓ Generator

Description

The investment project is located in the city of Alanya - almost in the center of the Avsallar district, near the most famous beach Ijekum. Located in the area of 3,694 m2 and will consist of one residential unit in 10 floors and 90 apartments.

To choose from there are apartment layouts:

- 1+1 46-50 sq.m.
- Duplexes with access to the garden 2+1 - 125 sq.m.
- Duplex with access to the garden 3+1 - 150 sq.m.
- Penthouses 2+1 from 96 - 105 sq.m.

All apartments are rented with quality finishing, plumbing, kitchen set.

THE INFRASTRUCTURE OF THE COMPLEX:

- Outdoor adult and children's pools
- Heated indoor pool
- Gazebo and barbecue area
- Tennis court
- Fitness room

- Sauna and Jacuzzi
- Turkish bath (hamam)
- Showers and changing rooms
- Massage rooms
- Internet in common project area
- Playground
- Indoor and outdoor car parking
- Generator

The territory will be decorated with decorative greenery and a well-maintained garden.

LOCATION:

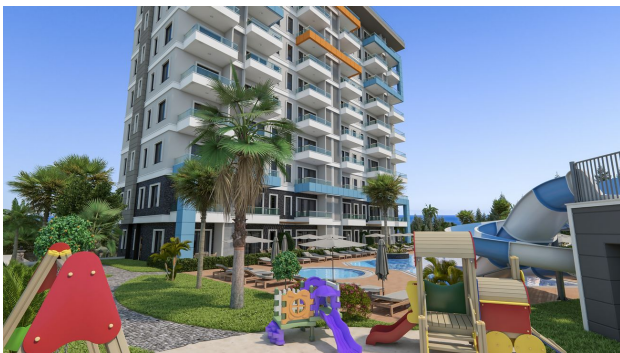
- Avsallar / Alanya / Turkey
- Distance to the center of Avsallar: 100 m
- Distance to the sea: 550 meters
- Distance to Gazipasha Airport: 50 km
- Distance to Antalya Airport: 105 km

CONSTRUCTION:

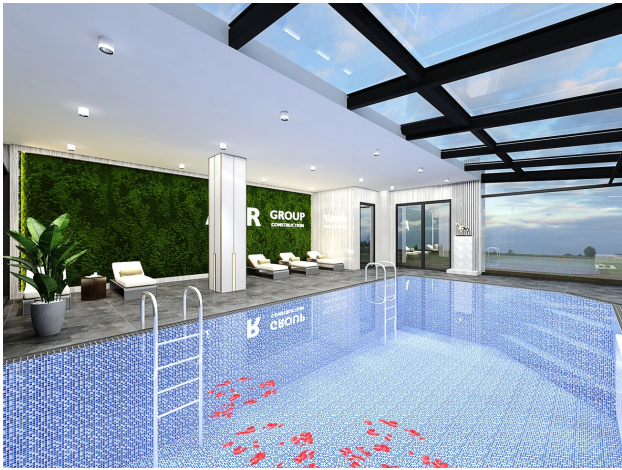
- Start: 14.02.2022
- Completion: 31.08.2023

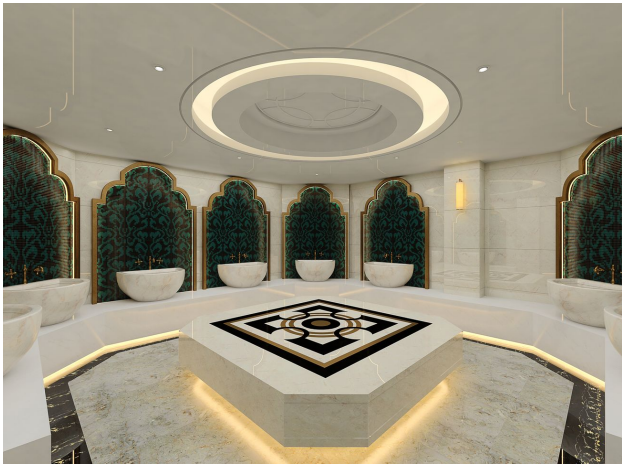
Information updated 06.05.2025

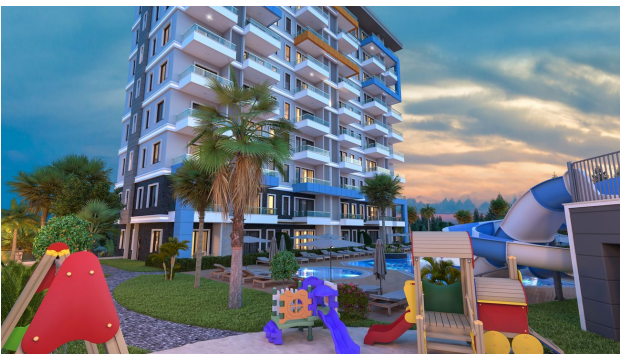
Photo gallery











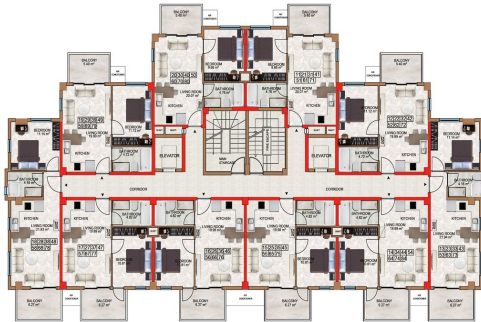


2nd BASEMENT FLOOR PLAN



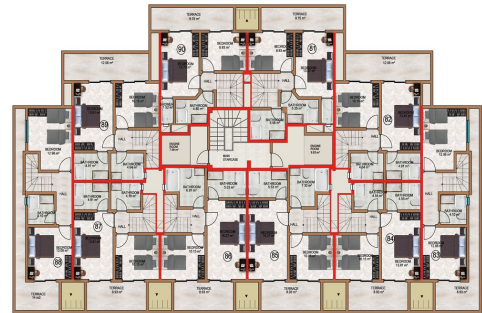
1st BASEMENT FLOOR PLAN

NO 4 DBLK. 40 M2 + 18 M2 TERRACE
NO 5 DBLK. 40 M2 + 13 M2 TERRACE
NO 7 DBLK. 40 M2 + 18 M2 TERRACE



FLOOR PLAN 1st to 7th FLOOR

NO 11 - 40 M2 + 6 M2 BALCONY
NO 12 - 40 M2 + 6 M2 BALCONY
NO 13 - 43 M2 + 7 M2 BALCONY
NO 14 - 40 M2 + 7 M2 BALCONY
NO 15 - 40 M2 + 7 M2 BALCONY
NO 16 - 40 M2 + 7 M2 BALCONY
NO 17 - 40 M2 + 7 M2 BALCONY
NO 18 - 40 M2 + 7 M2 BALCONY
NO 19 - 40 M2 + 7 M2 BALCONY
NO 20 - 40 M2 + 6 M2 BALCONY



PENTHOUSE PLAN

NO 81 DBLK. 40 M2 + 18 M2 TERRACE
NO 82 DBLK. 40 M2 + 13 M2 TERRACE
NO 83 DBLK. 41 M2 + 14 M2 TERRACE
NO 84 DBLK. 40 M2 + 8 M2 TERRACE
NO 85 DBLK. 47 M2 + 9 M2 TERRACE
NO 86 DBLK. 47 M2 + 9 M2 TERRACE
NO 87 DBLK. 40 M2 + 8 M2 TERRACE
NO 88 DBLK. 41 M2 + 18 M2 TERRACE
NO 89 DBLK. 40 M2 + 12 M2 TERRACE
NO 90 DBLK. 40 M2 + 18 M2 TERRACE

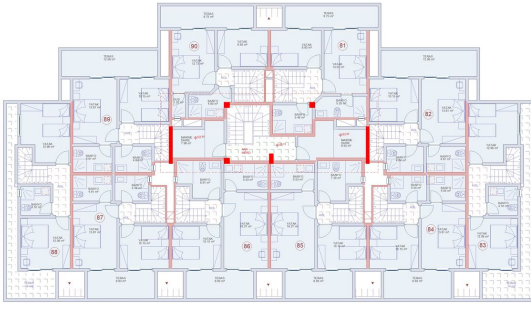


8th FLOOR PLAN

NO 81 DBLK. 40 M2 + 8 M2 BALCONY
NO 82 DBLK. 40 M2 + 8 M2 BALCONY
NO 83 DBLK. 43 M2 + 7 M2 BALCONY
NO 84 DBLK. 40 M2 + 7 M2 BALCONY
NO 85 DBLK. 40 M2 + 7 M2 BALCONY
NO 86 DBLK. 40 M2 + 7 M2 BALCONY
NO 87 DBLK. 40 M2 + 7 M2 BALCONY
NO 88 DBLK. 40 M2 + 7 M2 BALCONY
NO 89 DBLK. 40 M2 + 8 M2 BALCONY
NO 90 DBLK. 40 M2 + 8 M2 BALCONY



8 KAT PLAN



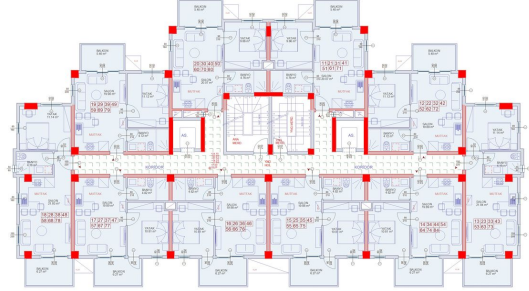
ÇATI ARABI
PLANI 1/50



ZEMİN KAT
PLANI 1/50



VAZİYET
PLANI 1/200



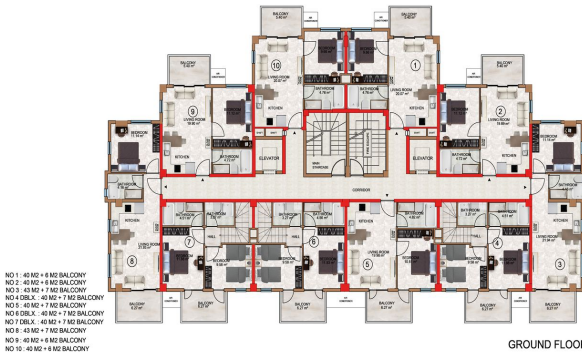
1-2-3-4-5-6-7. KAT
PLANI 1/50



1. ODORUM KAT
PLANI 1/50



2. ODORUM KAT
PLANI 1/50



GROUND FLOOR PLAN

NO 1: 40 M2 + 6 M2 BALCONY
NO 2: 40 M2 + 6 M2 BALCONY
NO 3: 40 M2 + 7 M2 BALCONY
NO 4: 40 M2 + 7 M2 BALCONY
NO 5: 40 M2 + 7 M2 BALCONY
NO 6: 40 M2 + 7 M2 BALCONY
NO 7: 40 M2 + 7 M2 BALCONY
NO 8: 40 M2 + 7 M2 BALCONY
NO 9: 40 M2 + 6 M2 BALCONY
NO 10: 40 M2 + 6 M2 BALCONY
NO 11: 40 M2 + 6 M2 BALCONY