

Apartments in Alanya from the developer, Avsallar district (01257)



90 000 € - 140 000 €

- 🏠 Floor area** 46 m² - 125 m²
- 🏠 Number of rooms** 1 bedroom
2+1 penthouse
- 🪑 Furnitures** Partly
- 🌊 To the beach:** 550 m
- 📍 Location:** Turkey, Alanya, Avsallar
- ✈️ To the airport:** 50 km

 To the city
centre:

24 km

Options

- ✓ Balcony/ Terrace
- ✓ Swimming pool
- ✓ 0% installment
- ✓ Elevator
- ✓ Playground
- ✓ Generator

Description

The investment project is located in the city of Alanya - almost in the center of the Avsallar district, near the most famous beach Ijekum. Located in the area of 3,694 m² and will consist of one residential unit in 10 floors and 90 apartments.

To choose from there are apartment layouts:

- 1+1 46-50 sq.m.
- Duplexes with access to the garden 2+1 - 125 sq.m.
- Duplex with access to the garden 3+1 - 150 sq.m.
- Penthouses 2+1 from 96 - 105 sq.m.

All apartments are rented with quality finishing, plumbing, kitchen set.

THE INFRASTRUCTURE OF THE COMPLEX:

- Outdoor adult and children's pools
- Heated indoor pool
- Gazebo and barbecue area
- Tennis court
- Fitness room

- Sauna and Jacuzzi
- Turkish bath (hamam)
- Showers and changing rooms
- Massage rooms
- Internet in common project area
- Playground
- Indoor and outdoor car parking
- Generator

The territory will be decorated with decorative greenery and a well-maintained garden.

LOCATION:

- Avsallar / Alanya / Turkey
- Distance to the center of Avsallar: 100 m
- Distance to the sea: 550 meters
- Distance to Gazipasha Airport: 50 km
- Distance to Antalya Airport: 105 km

CONSTRUCTION:

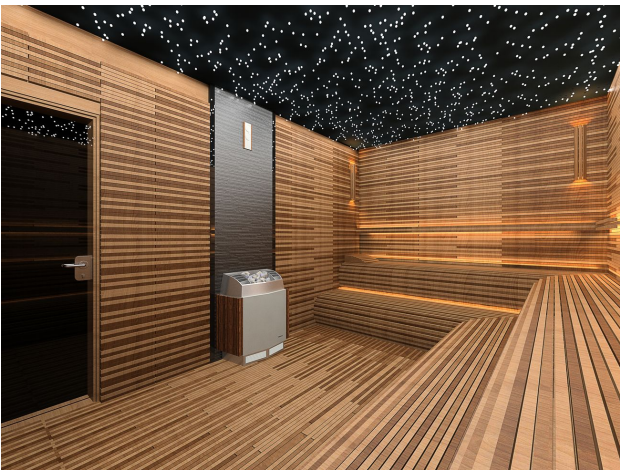
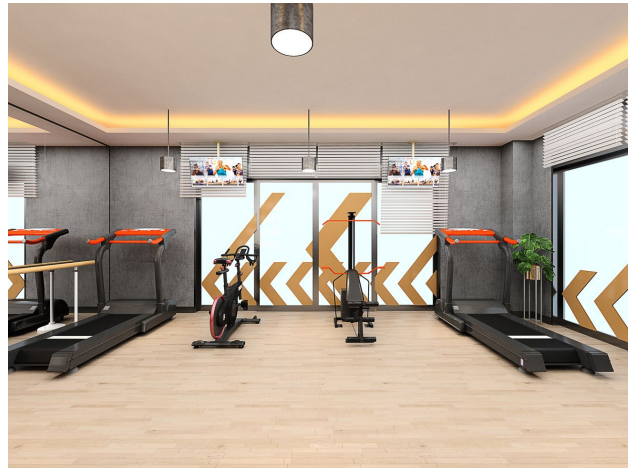
- Start: 14.02.2022
- Completion: 31.08.2023

Information updated 09.08.2024

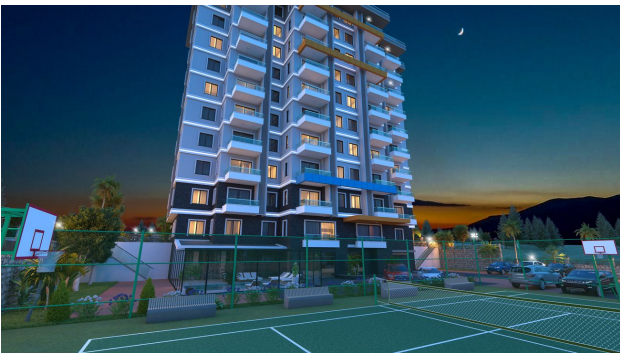
Photo gallery











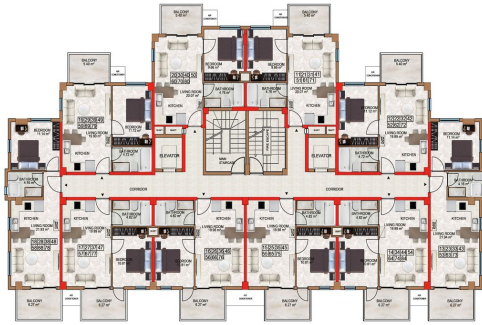


2nd BASEMENT FLOOR PLAN



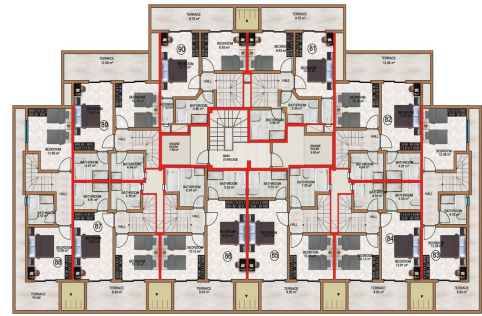
NO 1 DBLK. 40 M2 + 18 M2 TERRACE
 NO 2 DBLK. 40 M2 + 18 M2 TERRACE
 NO 3 DBLK. 40 M2 + 18 M2 TERRACE

1st BASEMENT FLOOR PLAN



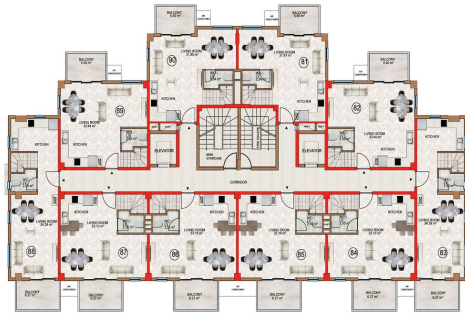
NO 11 - 40 M2 + 8 M2 BALCONY
 NO 12 - 40 M2 + 8 M2 BALCONY
 NO 13 - 43 M2 + 7 M2 BALCONY
 NO 14 - 40 M2 + 7 M2 BALCONY
 NO 15 - 40 M2 + 7 M2 BALCONY
 NO 16 - 40 M2 + 7 M2 BALCONY
 NO 17 - 40 M2 + 7 M2 BALCONY
 NO 18 - 40 M2 + 7 M2 BALCONY
 NO 19 - 40 M2 + 8 M2 BALCONY
 NO 20 - 40 M2 + 8 M2 BALCONY

FLOOR PLAN 1st to 7th FLOOR



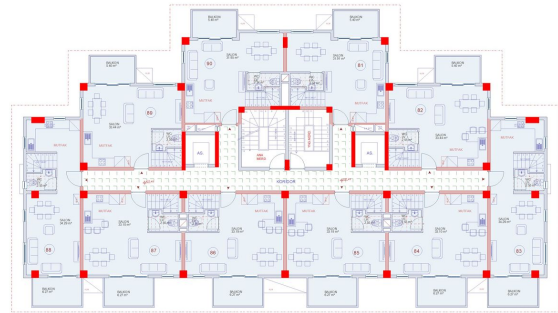
NO 81 DBLK. 43 M2 + 10 M2 TERRACE
 NO 82 DBLK. 40 M2 + 12 M2 TERRACE
 NO 83 DBLK. 41 M2 + 10 M2 TERRACE
 NO 84 DBLK. 40 M2 + 9 M2 TERRACE
 NO 85 DBLK. 41 M2 + 9 M2 TERRACE
 NO 86 DBLK. 41 M2 + 9 M2 TERRACE
 NO 87 DBLK. 40 M2 + 9 M2 TERRACE
 NO 88 DBLK. 41 M2 + 9 M2 TERRACE
 NO 89 DBLK. 40 M2 + 12 M2 TERRACE
 NO 90 DBLK. 40 M2 + 9 M2 TERRACE

PENTHOUSE PLAN

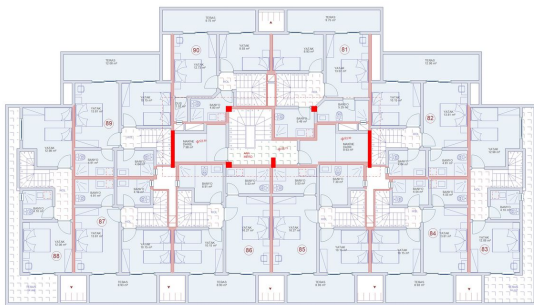


NO 81 DBLK. 40 M2 + 8 M2 BALCONY
 NO 82 DBLK. 40 M2 + 8 M2 BALCONY
 NO 83 DBLK. 43 M2 + 7 M2 BALCONY
 NO 84 DBLK. 40 M2 + 7 M2 BALCONY
 NO 85 DBLK. 40 M2 + 7 M2 BALCONY
 NO 86 DBLK. 40 M2 + 7 M2 BALCONY
 NO 87 DBLK. 40 M2 + 7 M2 BALCONY
 NO 88 DBLK. 40 M2 + 7 M2 BALCONY
 NO 89 DBLK. 40 M2 + 8 M2 BALCONY
 NO 90 DBLK. 40 M2 + 8 M2 BALCONY

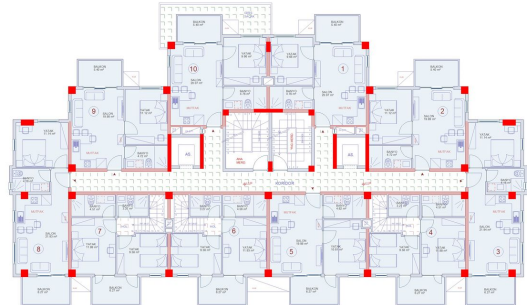
8th FLOOR PLAN



8 KAT PLAN 150



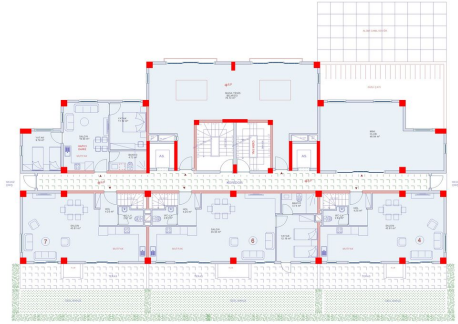
CATI ARAZI PLAN 150



ZEMIN KAT PLANI 150



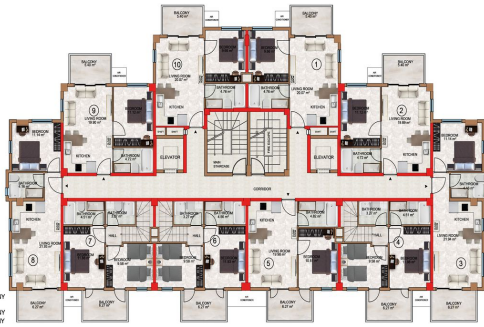
1-2-3-4-5-6-7_KAT
PLANI 1:50



1. BODURUM KAT
PLANI 1:50



2. BODURUM KAT
PLANI 1:50



GROUND FLOOR PLAN

- NO 1 - 40 M² + 6 M² BALCONY
- NO 2 - 46 M² + 6 M² BALCONY
- NO 3 - 40 M² + 7 M² BALCONY
- NO 4 (D.B.L.) - 46 M² + 7 M² BALCONY
- NO 5 - 40 M² + 7 M² BALCONY
- NO 6 (D.B.L.) - 46 M² + 7 M² BALCONY
- NO 7 (D.B.L.) - 40 M² + 7 M² BALCONY
- NO 8 - 46 M² + 7 M² BALCONY
- NO 9 - 40 M² + 6 M² BALCONY
- NO 10 - 40 M² + 6 M² BALCONY



Scan the QR code to open the original page