

Luxury apartment complex with sea view, Mahmutlar district (01549)



282 500 € - 1 250 000 €

-  Floor area **63 m² - 110 m²**
-  Number of rooms **1 bedroom**
2 bedrooms
-  Furnitures **Partly**
-  To the beach: **50 m**
-  Location: **Turkey, Alanya, Mahmutlar**
-  To the airport: **27 km**

 To the city
centre:

15 km

Options

- ✓ Sea view
- ✓ White goods
- ✓ Warm floor
- ✓ Balcony/ Terrace
- ✓ Swimming pool
- ✓ 0% installment
- ✓ Private beach
- ✓ Underground parking
- ✓ For citizenship
- ✓ Elevator
- ✓ Playground
- ✓ Generator

Description

Luxurious and comfortable complex, where there is everything for your rest and life: the sea, the sun and magnificent infrastructure. The complex is built on a plot of 6,500 m², consists of 2 blocks, and there will be its own shopping center. The panoramic windows of the apartments will offer a beautiful view of the sea and Alanya. The complex will have a beautiful cultivated garden, its own underground passage to the beach.

- Start of construction - 01.06.2022
- Completion of construction - 30.06.2024

Infrastructure of the complex: large outdoor pool, water park with slides, children's pool, pool bar, children's outdoor playground, indoor children's playroom, billiards, table tennis, cinema, SPA-center, barbecue, 24/7 security, closed parking for 102 seats.

Inside the SPA centre: indoor heated swimming pool with panoramic sea views (glass ceiling and walls), hammam, steam room, Finnish sauna, massage rooms, relaxation area, fitness center, yoga and pilates hall.

Technical characteristics: antibacterial facade covering, first-class noise, heat and water insulation, modern elevators, fire protection system, central satellite system, generator, video surveillance.

A set of household appliances, air conditioners in every room and warm floors as a gift to every customer!

Connection of meters and ISKAN - at the expense of developers

Features of the apartment: armored steel doors 1st class, entryphone with video system. Suspended ceilings with built-in spotlight. Washable paint on the walls, flooring to choose: laminate and porcelain. Underfloor heating system in bathrooms. First class plumbing, designer kitchen set and bathroom furniture. Aluminum roller shutters and double-glazed windows provide sound insulation in all rooms.

Total of 170 apartments:

- 1+1 63 sq. m
- 1+1 loft 110 sq. m
- 2+1 102 sq. m gross / 78 sq. m net

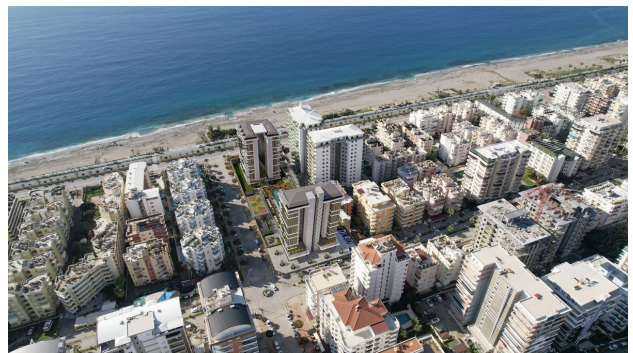
The complex is located on the first coastline, which guarantees you the specific characteristics of a stable rise in prices.

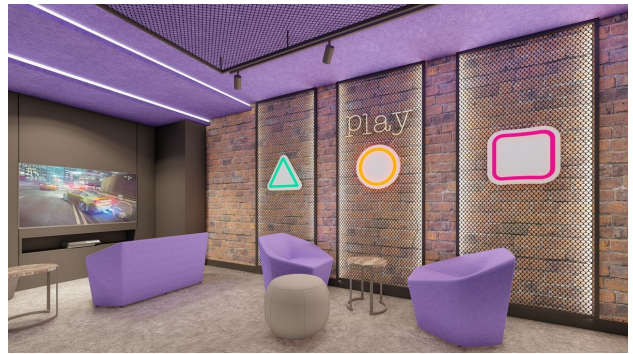
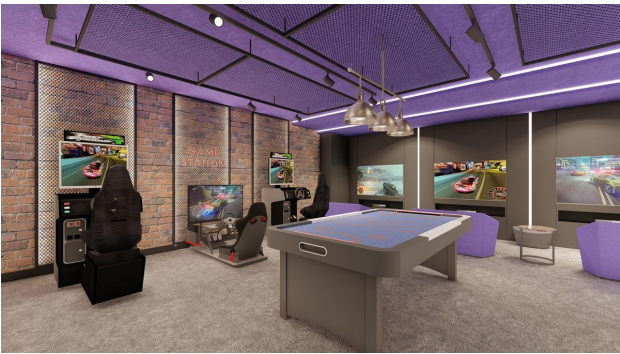
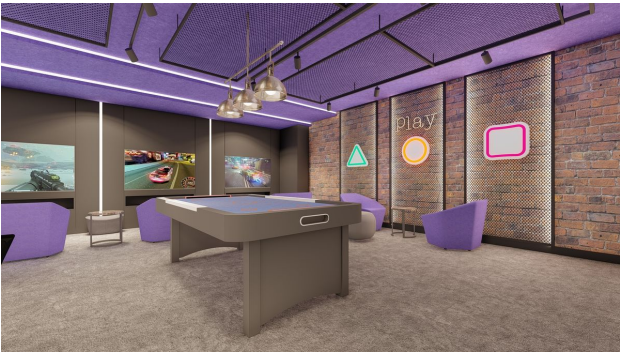
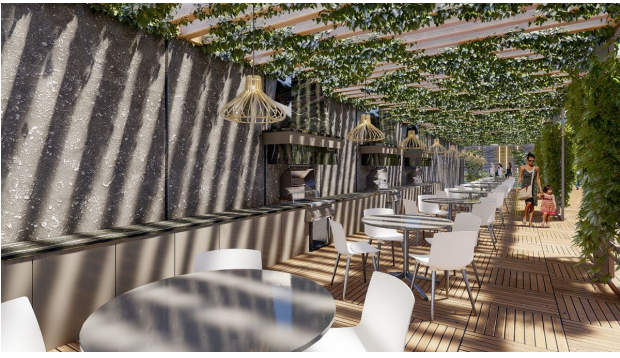
- To the center of Alanya - 15 km
- To Gazipasa Airport - 27 km
- To Antalya Airport - 140 km

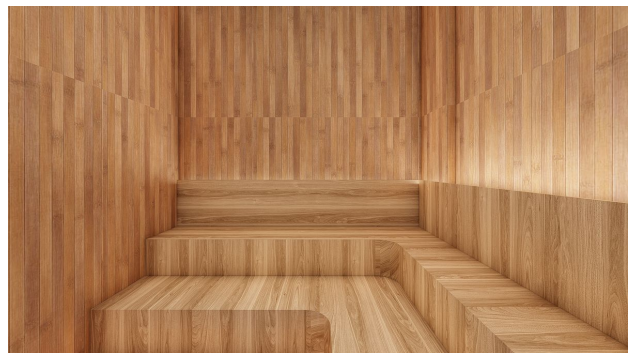
Information updated 09.08.2024

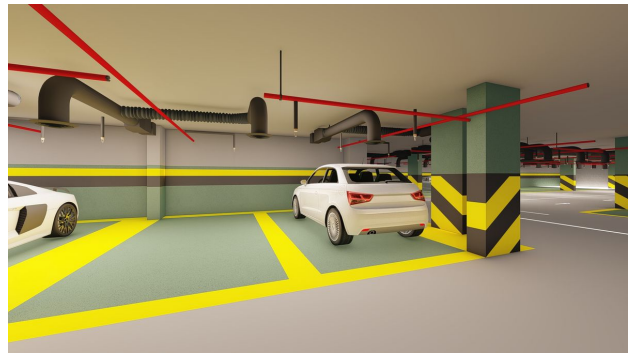
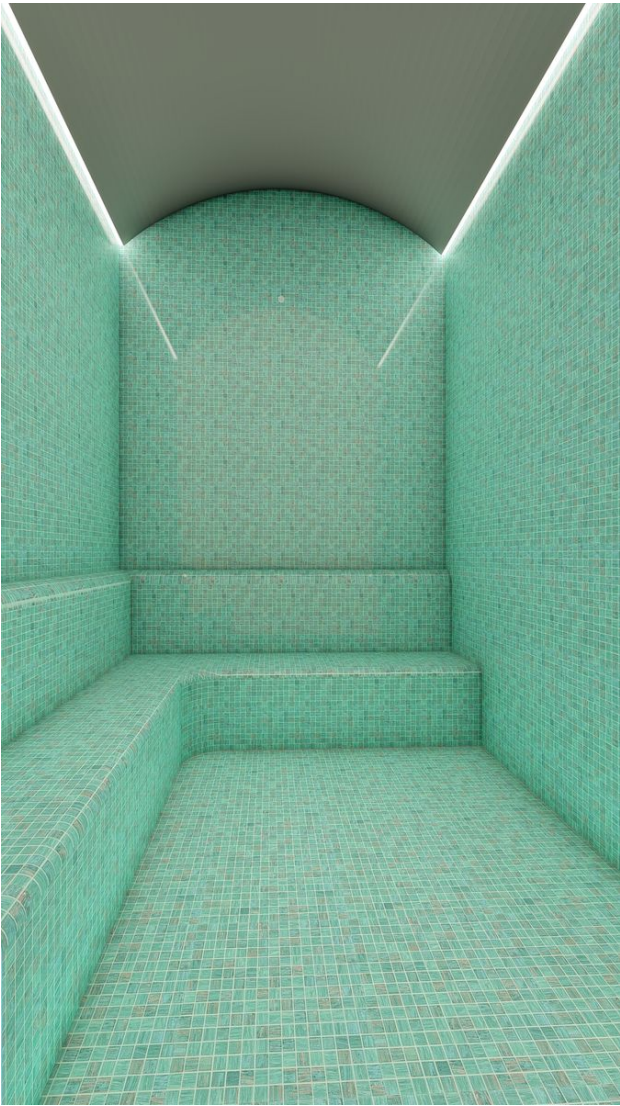
Photo gallery

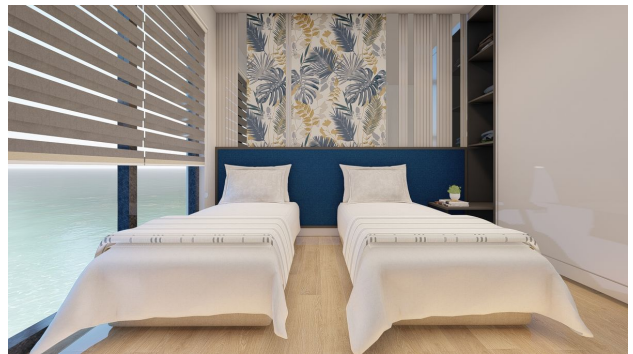
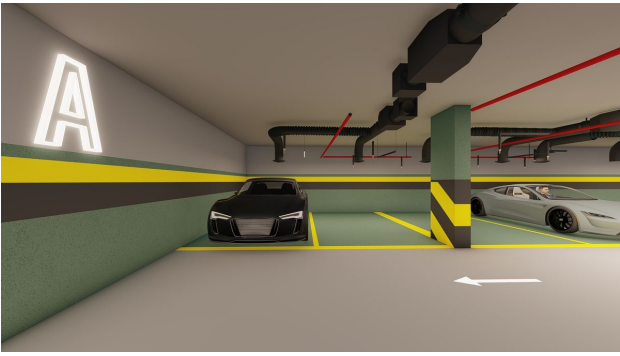


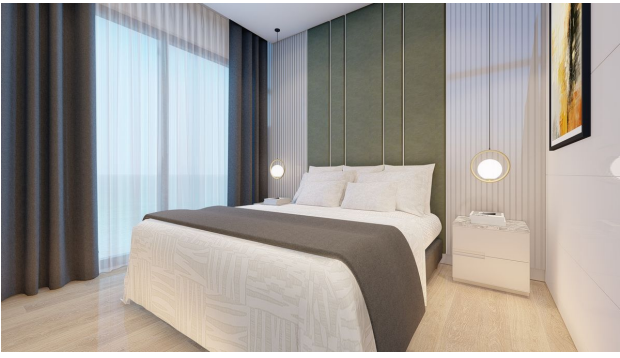


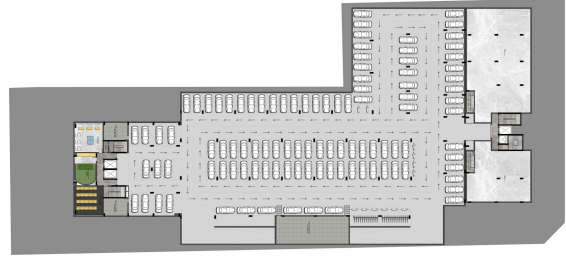








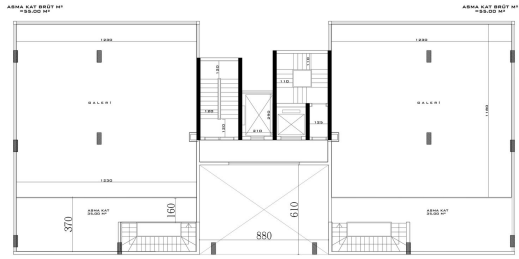




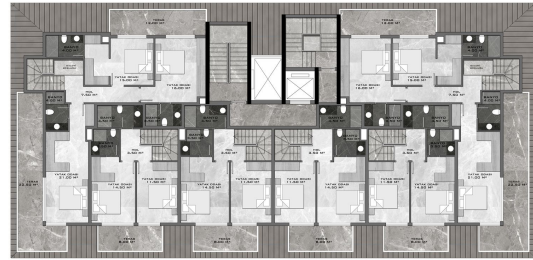
A BLOK
giriş



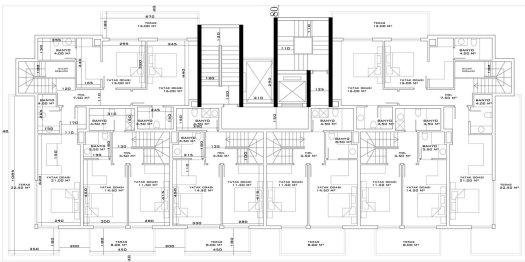
A BLOK



B BLOK



B BLOK



B BLOK



DAIRAH BODI NO 18111 133.00 M² * 41.00 M² BALOKON * TERAS
* 40.00 M² DERTAK ALAM
* 28.00 M²

DAIRAH BODI NO 18112 81.00 M² * 14.00 M² BALOKON * TERAS
* 8.00 M² DERTAK ALAM

DAIRAH BODI NO 18113 81.00 M² * 14.00 M² BALOKON * TERAS
* 8.00 M² DERTAK ALAM

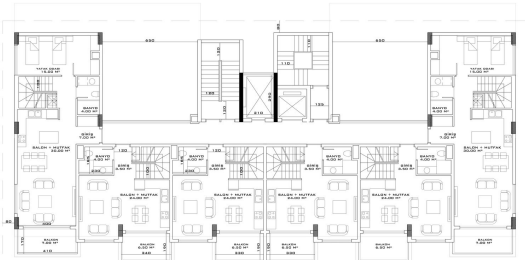
DAIRAH BODI NO 18114 81.00 M² * 14.00 M² BALOKON * TERAS
* 8.00 M² DERTAK ALAM

DAIRAH BODI NO 18115 81.00 M² * 14.00 M² BALOKON * TERAS
* 8.00 M² DERTAK ALAM

DAIRAH BODI NO 18116 81.00 M² * 14.00 M² BALOKON * TERAS
* 8.00 M² DERTAK ALAM

DAIRAH BODI NO 18117 81.00 M² * 14.00 M² BALOKON * TERAS
* 8.00 M² DERTAK ALAM

B BLOK



B BLOK



DAIRAH BODI NO 18111 133.00 M² * 41.00 M² BALOKON * TERAS
* 40.00 M² DERTAK ALAM
* 28.00 M²

DAIRAH BODI NO 18112 81.00 M² * 14.00 M² BALOKON * TERAS
* 8.00 M² DERTAK ALAM

DAIRAH BODI NO 18113 81.00 M² * 14.00 M² BALOKON * TERAS
* 8.00 M² DERTAK ALAM

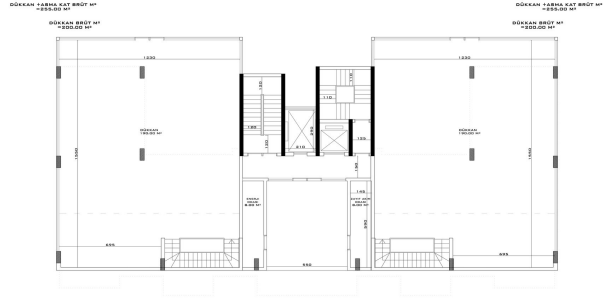
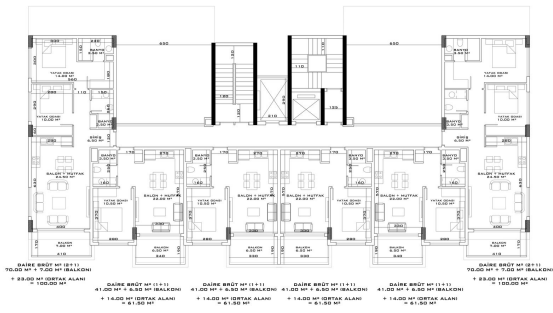
DAIRAH BODI NO 18114 81.00 M² * 14.00 M² BALOKON * TERAS
* 8.00 M² DERTAK ALAM

DAIRAH BODI NO 18115 81.00 M² * 14.00 M² BALOKON * TERAS
* 8.00 M² DERTAK ALAM

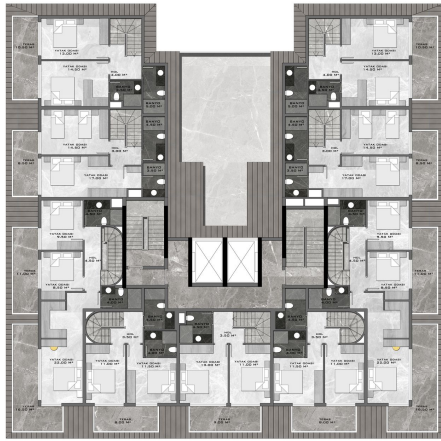
DAIRAH BODI NO 18116 81.00 M² * 14.00 M² BALOKON * TERAS
* 8.00 M² DERTAK ALAM

DAIRAH BODI NO 18117 81.00 M² * 14.00 M² BALOKON * TERAS
* 8.00 M² DERTAK ALAM

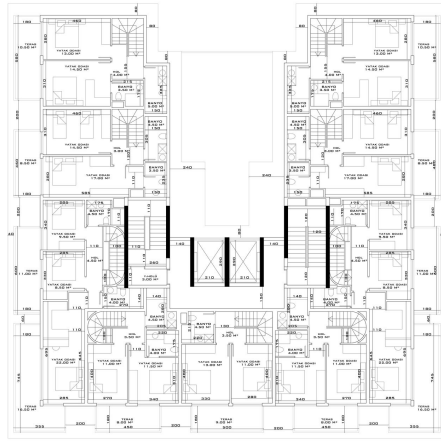
B BLOK



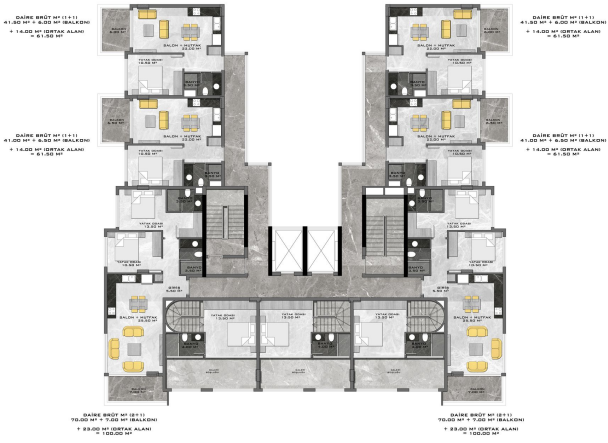
A BLOK



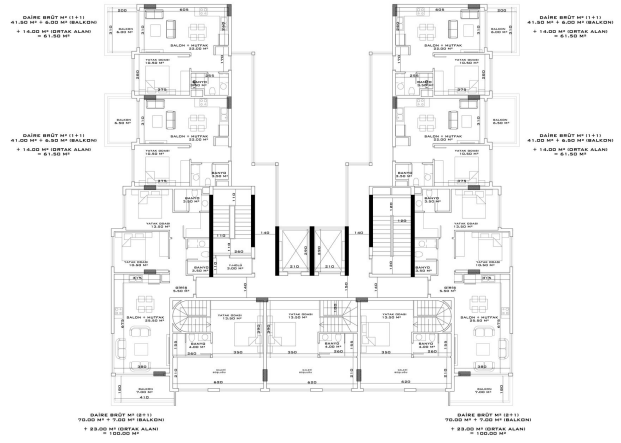
A BLOK



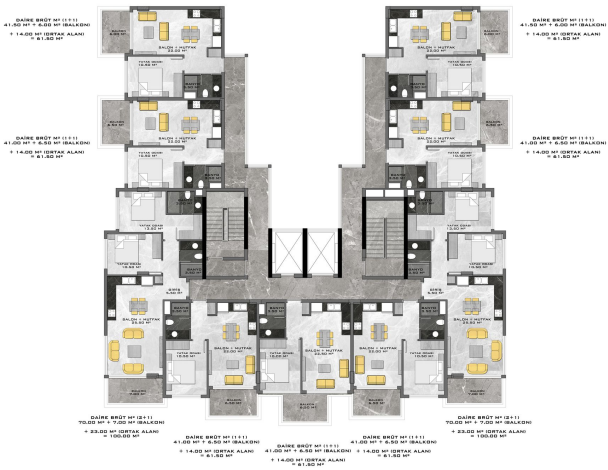
A BLOK



A BLOK



A BLOK



Scan the QR code to open the original page