

Квартиры в Алании (004161)



210 000 € - 350 000 €

🏠 Floor area **62 m² - 167 m²**


🏠 Number of rooms

- 1 bedroom**
- 1+1 penthouse**
- 2+1 penthouse**
- 3+1 penthouse**
- 4+1 penthouse**

🪑 Furnitures **Partly**

🌊 To the beach: **700 m**

📍 Location: **Turkey, Alanya, Guller Pinari**

 To the airport: **45 km**

 To the city
centre: **1 km**

Options

- ✓ Panoramic view
- ✓ Balcony/ Terrace
- ✓ Swimming pool
- ✓ Garage
- ✓ 0% installment
- ✓ Elevator
- ✓ Playground
- ✓ Generator

Description

Предлагаем Вашему вниманию проект жилого комплекса в Алании, район Гуллер Пинари.

Информация о проекте:

Общая площадь земли: 3.320 M2

3 BLOCK

125 квартир

41 (1+1)

70 (2+1)

8 (2+1) DUPLEX

6 (3+1) DUPLEX

Инфраструктура состоит из:

Два открытых бассейна

Крытый бассейн

Зона барбекю

Беседка

Детская площадка

Массажный кабинет

Сауна

Комната отдыха

Фитнес центр

Игровая комната

Комната смотрителя (консьерж)

Генератор

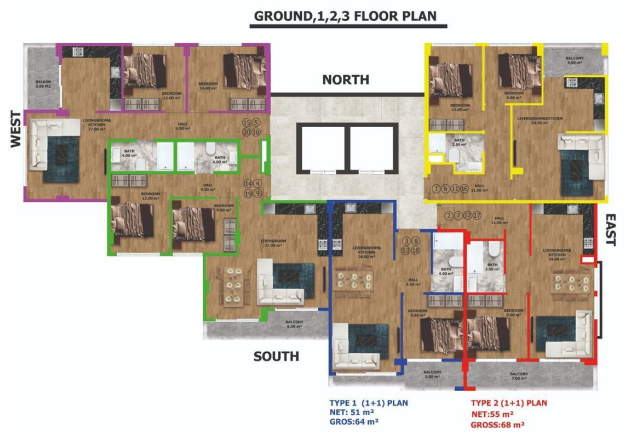
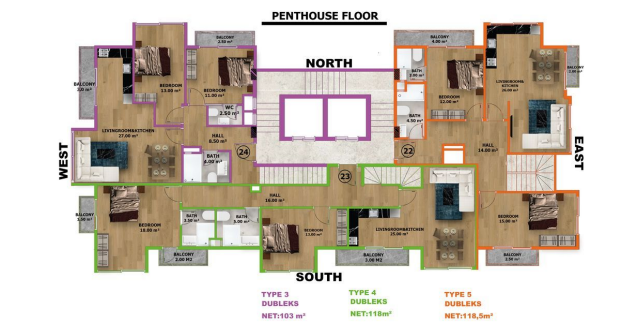
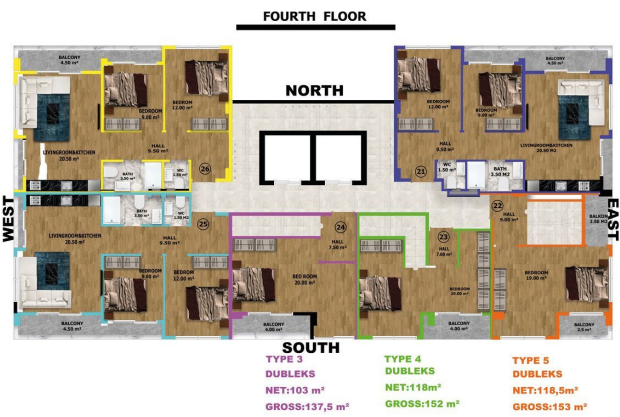
Лифт

Строительство двух блоков: Начало строительства: 15.05.2022

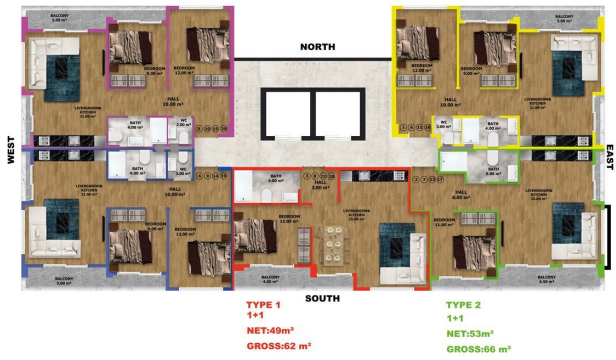
Конец строительства: 13.09.2023

Photo gallery

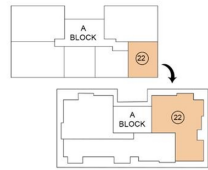




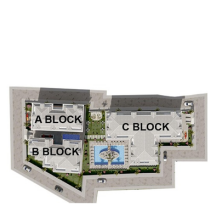
GROUND,1,2,3 FLOOR



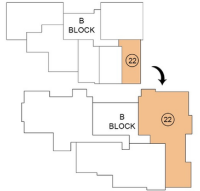
TYPE-5 DUBLEX PLAN



1. HALL	34 m ²
2. LIVING ROOM/KITCHEN	28 m ²
3. BALCONY	12 m ²
4. BEDROOM	3 m ²
5. BATHROOM	3 m ²
6. BALCONY	4 m ²
7. BATHROOM	4.5 m ²
8. BEDROOM	15 m ²
9. BALCONY	2.5 m ²
NET AREAS	83 m ²
WALL	15 m ²
COMMON AREAS	24 m ²
GROSS AREAS	118 m ²



TYPE-3 DUBLEX PLAN

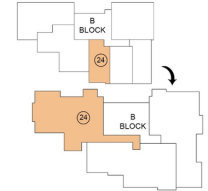


1. HALL	13.50 m ²
2. LIVING ROOM/KITCHEN	30 m ²
3. BALCONY	5.50 m ²
4. BEDROOM	18 m ²
5. BATHROOM	3.5 m ²
6. BEDROOM	18 m ²
7. BATHROOM	2.50 m ²
8. BALCONY	3.50 m ²
NET AREAS	102 m ²
WALL	10 m ²
COMMON AREAS	30 m ²
GROSS AREAS	167 m ²

1. HALL	11.50m ²
2. BEDROOM	18 m ²
3. BATHROOM	3.50 m ²
4. BALCONY	3.50 m ²



TYPE-5 DUBLEX PLAN

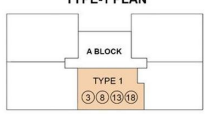


1. HALL	17.50 m ²
2. LIVING ROOM/KITCHEN	31 m ²
3. BALCONY	5 m ²
4. BEDROOM	13 m ²
5. BATHROOM	2.50m ²
6. BEDROOM	18 m ²
7. BATHROOM	3.50 m ²
NET AREAS	124 m ²
WALL	10m ²
COMMON AREAS	30 m ²
GROSS AREAS	164 m ²

1. HALL	3.50 m ²
2. BEDROOM	18 m ²
3. BATHROOM	3.50 m ²
4. BALCONY	3.50 m ²



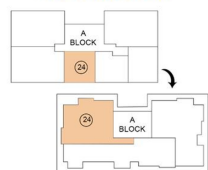
TYPE-1 PLAN



1. HALL	3 m ²
2. LIVING ROOM/KITCHEN	25 m ²
3. BEDROOM	11 m ²
4. BATHROOM	5 m ²
5. BALCONY	5 m ²
NET AREAS	49 m ²
WALL	5 m ²
COMMON AREAS	8 m ²
GROSS AREAS	62 m ²



TYPE-3 DUBLEX PLAN

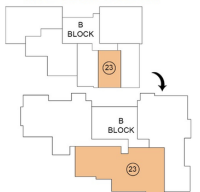


1. HALL	7.5 m ²
2. BALCONY	4 m ²
3. BEDROOM	20 m ²

1. HALL	8.5m ²
2. LIVING ROOM/KITCHEN	27 m ²
3. BALCONY	3 m ²
4. BEDROOM	11 m ²
5. BATHROOM	2.5 m ²
6. BALCONY	2.5 m ²
7. BATHROOM	4 m ²
8. BEDROOM	15 m ²
9. BALCONY	10m ²
NET AREAS	100m ²
WALL	10 m ²
COMMON AREAS	5 m ²
GROSS AREAS	137.5 m ²



TYPE-4 DUBLEX PLAN

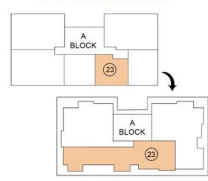


1. HALL	12 m ²
2. LIVING ROOM/KITCHEN	29 m ²
3. BALCONY	9.50 m ²
4. BEDROOM	9 m ²
5. BATHROOM	4.5 m ²
6. BEDROOM	18 m ²
7. BATHROOM	3.50 m ²
8. BALCONY	5 m ²
NET AREAS	124 m ²
WALL	10 m ²
COMMON AREAS	30 m ²
GROSS AREAS	164 m ²

1. HALL	9 m ²
2. BEDROOM	18 m ²
3. BATHROOM	3 m ²
4. BALCONY	5.50 m ²



TYPE-4 DUBLEX PLAN



1. HALL	7 m ²
2. BALCONY	4 m ²
3. BEDROOM	20 m ²

1. HALL	16 m ²
2. LIVING ROOM/KITCHEN	29 m ²
3. BALCONY	3 m ²
4. BEDROOM	11 m ²
5. BATHROOM	2.5 m ²
6. BALCONY	2.5 m ²
7. BATHROOM	3.5 m ²
8. BEDROOM	18 m ²
9. BALCONY	1.5 m ²
NET AREAS	118 m ²
WALL	5 m ²
COMMON AREAS	24.5 m ²
GROSS AREAS	148 m ²

