

Квартиры в Алании (004161)



210 000 € - 350 000 €

🏠 Floor area **62 m² - 167 m²**


🏠 Number of rooms

- 1 bedroom**
- 1+1 penthouse**
- 2+1 penthouse**
- 3+1 penthouse**
- 4+1 penthouse**

🪑 Furnitures **Partly**

🌊 To the beach: **700 m**

📍 Location: **Turkey, Alanya, Guller Pinari**

 To the airport: **45 km**

 To the city
centre: **1 km**

Options

- ✓ Panoramic view
- ✓ Balcony/ Terrace
- ✓ Swimming pool
- ✓ Garage
- ✓ 0% installment
- ✓ Elevator
- ✓ Playground
- ✓ Generator

Description

Предлагаем Вашему вниманию проект жилого комплекса в Алании, район Гуллер Пинари.

Информация о проекте:

Общая площадь земли: 3.320 M2

3 BLOCK

125 квартир

41 (1+1)

70 (2+1)

8 (2+1) DUPLEX

6 (3+1) DUPLEX

Инфраструктура состоит из:

Два открытых бассейна

Крытый бассейн

Зона барбекю

Беседка

Детская площадка

Массажный кабинет

Сауна

Комната отдыха

Фитнес центр

Игровая комната

Комната смотрителя (консьерж)

Генератор

Лифт

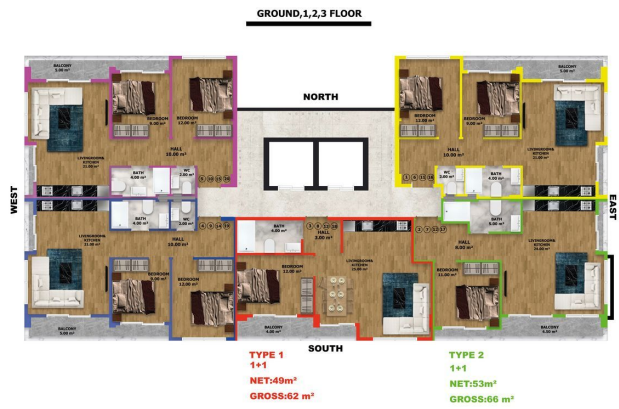
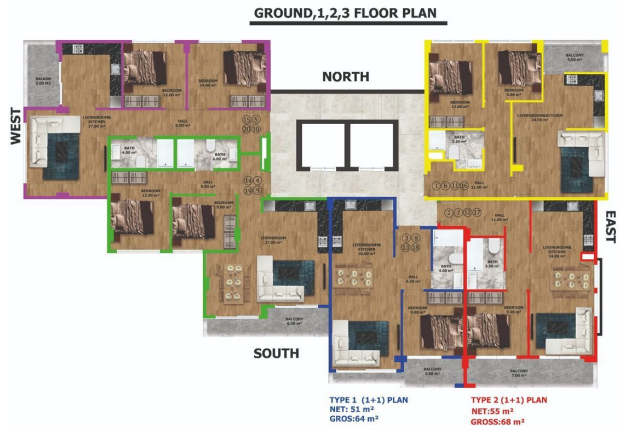
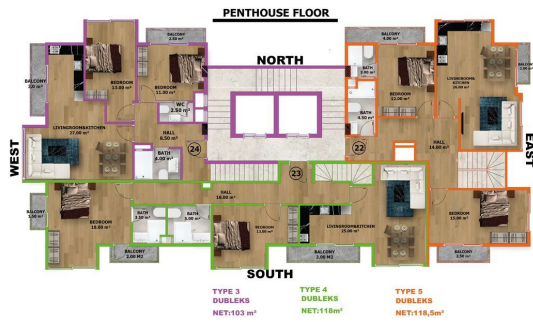
Строительство двух блоков: Начало строительства: 15.05.2022

Конец строительства: 25.07.2023

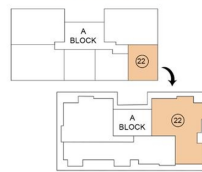
Photo gallery







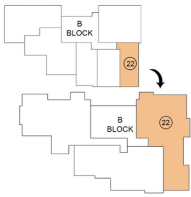
TYPE-5 DUBLEX PLAN



1. HALL	14 m ²
2. LIVING ROOM/KITCHEN	26 m ²
3. BALCONY	2 m ²
4. BEDROOM	17 m ²
5. BATHROOM	3 m ²
6. BALCONY	4 m ²
7. BATHROOM	4,5 m ²
8. BEDROOM	15 m ²
9. BALCONY	2,5 m ²
NET AREAS	83 m ²
HALL	63 m ²
COMMON AREAS	24 m ²
GROSS AREAS	160 m²



TYPE-3 DUBLEX PLAN

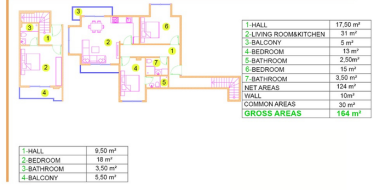
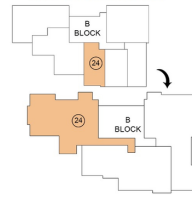


1.HALL	13,90 m ²
2.LIVING ROOM&KITCHEN	20 m ²
3.BALCONY	3,50 m ²
4.BEDROOM	16 m ²
5.BATHROOM	3,50 m ²
6.BEDROOM	16 m ²
7.BATHROOM	3,50 m ²
8.BALCONY	3,50 m ²
NET AREAS	127 m ²
WALL	10 m ²
COMMON AREAS	8 m ²
GROSS AREAS	167 m ²

1.HALL	11,50m ²
2.BEDROOM	16 m ²
3.BATHROOM	3,50 m ²
4.BALCONY	3,50 m ²



TYPE-5 DUBLEX PLAN

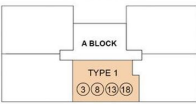


1.HALL	17,50 m ²
2.LIVING ROOM&KITCHEN	21 m ²
3.BALCONY	5 m ²
4.BEDROOM	13 m ²
5.BATHROOM	2,50m ²
6.BEDROOM	16 m ²
7.BATHROOM	3,50 m ²
NET AREAS	124 m ²
WALL	10m ²
COMMON AREAS	30 m ²
GROSS AREAS	164 m ²

1.HALL	9,50 m ²
2.BEDROOM	16 m ²
3.BATHROOM	3,50 m ²
4.BALCONY	3,50 m ²



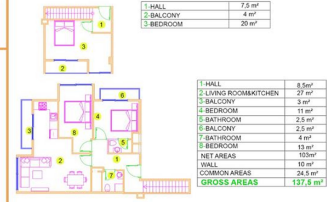
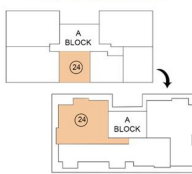
TYPE-1 PLAN



1.HALL	3 m ²
2.LIVINGROOM&KITCHEN	25 m ²
3.BEDROOM	11 m ²
4.BATHROOM	5 m ²
5.BALCONY	5 m ²
NET AREAS	49 m ²
WALL	3 m ²
COMMON AREAS	8 m ²
GROSS AREAS	62 m ²



TYPE-3 DUBLEX PLAN

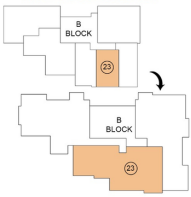


1.HALL	7,5 m ²
2.BALCONY	4 m ²
3.BEDROOM	20 m ²

1.HALL	8,5m ²
2.LIVING ROOM&KITCHEN	27 m ²
3.BALCONY	3 m ²
4.BEDROOM	13 m ²
5.BATHROOM	2,5 m ²
6.BALCONY	2,5 m ²
7.BATHROOM	4 m ²
8.BEDROOM	13 m ²
NET AREAS	100m ²
WALL	10 m ²
COMMON AREAS	16,5 m ²
GROSS AREAS	137,5 m ²

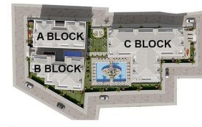


TYPE-4 DUBLEX PLAN

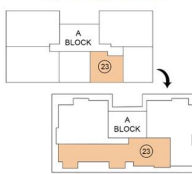


1.HALL	12 m ²
2.LIVING ROOM&KITCHEN	20 m ²
3.BALCONY	9,50 m ²
4.BEDROOM	9 m ²
5.BATHROOM	4,5 m ²
6.BEDROOM	18 m ²
7.BATHROOM	3,50 m ²
8.BALCONY	5 m ²
NET AREAS	124 m ²
WALL	10 m ²
COMMON AREAS	30 m ²
GROSS AREAS	164 m ²

1.HALL	9 m ²
2.BEDROOM	16 m ²
3.BATHROOM	3 m ²
4.BALCONY	3,50 m ²



TYPE-4 DUBLEX PLAN



1.HALL	7 m ²
2.BALCONY	4 m ²
3.BEDROOM	20 m ²

1.HALL	18 m ²
2.LIVING ROOM&KITCHEN	20 m ²
3.BEDROOM	13 m ²
4.BEDROOM	9 m ²
5.BATHROOM	2 m ²
6.BALCONY	3,5 m ²
7.BATHROOM	3,5 m ²
8.BEDROOM	16 m ²
9.BALCONY	13,5 m ²
NET AREAS	118 m ²
WALL	8,5 m ²
COMMON AREAS	24,5 m ²
GROSS AREAS	152 m ²



Scan the QR code to open the original page