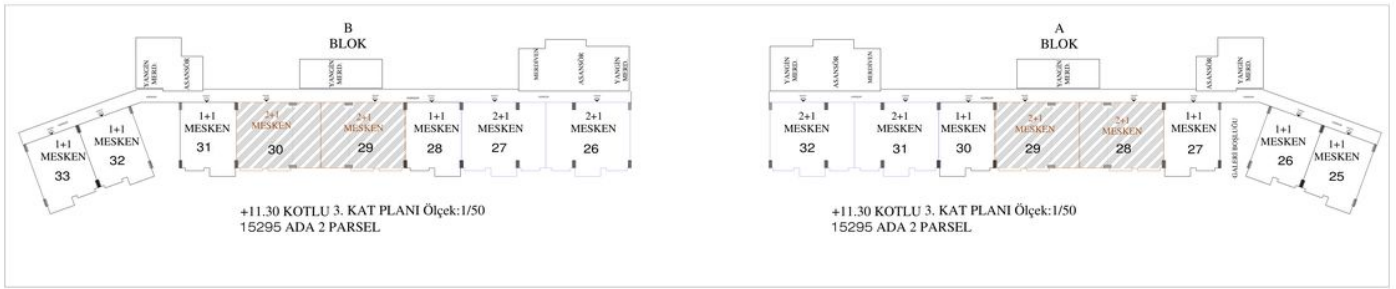



Apartment complex project in Antalya, Kundu (001307)




199 000 € - 1 500 000 €


 Floor area 87 m² - 185 m²


 Number of rooms
2 bedrooms
2+1 penthouse
3+1 penthouse

 Furnitures Partly

 To the beach: m

 Location: **Turkey, Antalya**

 To the airport: **1 km**

 To the city
centre: **km**

Options

- ✓ Sea view
- ✓ White goods
- ✓ Jacuzzi
- ✓ Balcony/ Terrace
- ✓ Swimming pool
- ✓ Private territory
- ✓ Outdoor parking
- ✓ 0% installment
- ✓ Security
- ✓ Beachfront
- ✓ Garden
- ✓ Tennis court
- ✓ Rental services
- ✓ Elevator
- ✓ Playground
- ✓ Generator

Description

The complex project in Antalya is on a plot of 10,720 m². 5 km from the world-famous Lara/Kundu hotels, 1 km from Antalya Airport, the tourism center, 1 km from private schools, 4.5 km from shopping malls such as the Mall of Antalya, Agora, Ikea.

With a length of 195 m and 12 floors, the building, inspired by the cruise ship created by its creator, is nominated for the title of the best project in the region with its unusual architecture.

In the project, which includes 174 apartments, including 1 office:

1+1 - 87 m², 2+1 - from 110 to 145 m²

3+1 - from 163 to 186 m².

All apartments are south facing and all have views of the social areas.

Social infrastructure:

- Lobby/Reception
- Covered parking (with 2 electric vehicle chargers)
- outdoor parking
- Tennis and basketball court
- Footpath
- Conference room and library
- Fitness/Sauna/Steam
- Outdoor swimming pool
- Indoor pool
- Aquapark
- Playground
- Mini club
- Private beach (free entrance)
- Free shuttle service (to the beach, airport, and malls)
- Barbecue area
- TV and satellite system
- Playgrounds (bowling, billiards, darts, table football, PlayStation, cinema)
- 24/7 security and video surveillance system
- Cafe and bar

- Solar energy systems (part of the energy used in social areas will be produced using solar panels).
- medical office

Building features:

- Compliant with earthquake regulations
- Conforms to building control regulations
- Complies with fire safety regulations
- surveyed land
- Generator
- Hidden air conditioning unit
- First quality insulation
- 6 elevators

Service sector:

- Hotel Services
- Dry cleaning
- Cleaning
- Carpet cleaning
- Technical service
- VIP transfer
- Car rent
- Courier service
- Veterinary
- Doctor

In the apartment:

- Built-in oven
- hob

Cooling system:

- Split air conditioner

Brands:

- Mitsubishi and similar

Heating system:

- Combined (with electric drive)
- Heating floor
- Brands
- Vaillant and similar

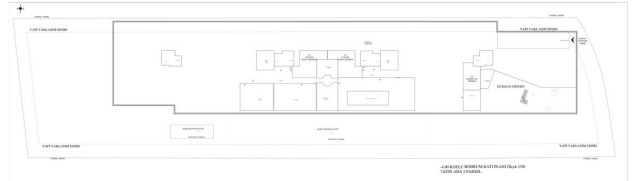
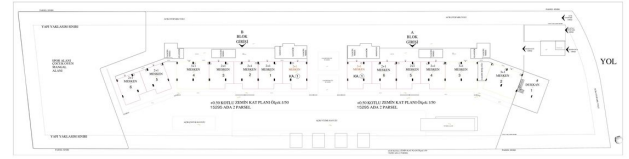
The material used in finishing:

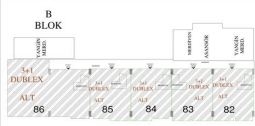
- Used Products
- Aluminum systems in doors and windows
- Kitchen and bathroom cabinets and American doors, lacquered
- Bases 60*120 Ceramic or equivalent.
- shower cabin
- steel door

Updated 21.06.2024

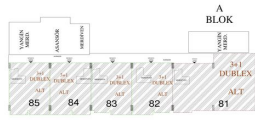
Photo gallery



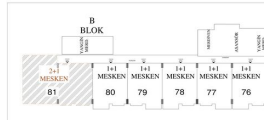




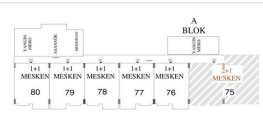
+40.10 KOTLU 11. KAT PLANI Ölçek:1/50
15295 ADA 2 PARSEL.



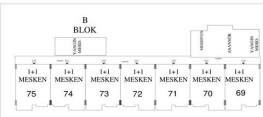
+40.10 KOTLU 11. KAT PLANI Ölçek:1/50
15295 ADA 2 PARSEL.



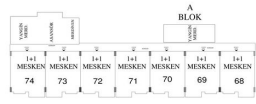
+36.50 KOTLU 10. KAT PLANI Ölçek:1/50
15295 ADA 2 PARSEL.



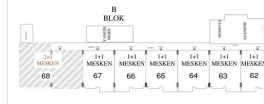
+36.50 KOTLU 10. KAT PLANI Ölçek:1/50
15295 ADA 2 PARSEL.



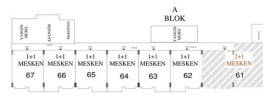
+32.90 KOTLU 9. KAT PLANI Ölçek:1/50
15295 ADA 2 PARSEL.



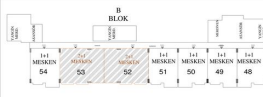
+32.90 KOTLU 9. KAT PLANI Ölçek:1/50
15295 ADA 2 PARSEL.



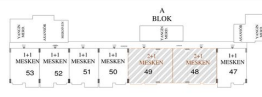
+30.30 KOTLU 8. KAT PLANI Ölçek:1/50
15295 ADA 2 PARSEL.



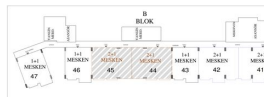
+30.30 KOTLU 8. KAT PLANI Ölçek:1/50
15295 ADA 2 PARSEL.



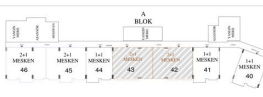
+22.10 KOTLU 6. KAT PLANI Ölçek:1/50
15295 ADA 2 PARSEL.



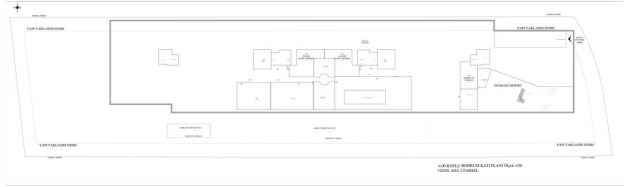
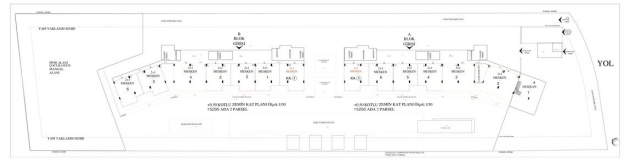
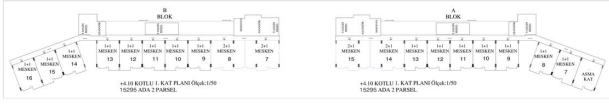
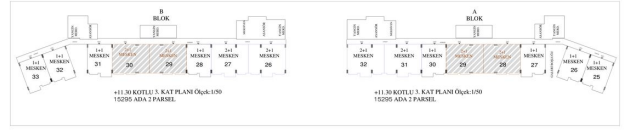
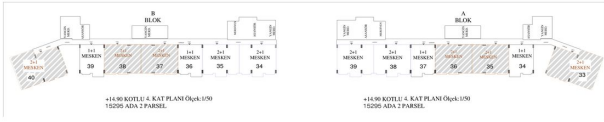
+22.10 KOTLU 6. KAT PLANI Ölçek:1/50
15295 ADA 2 PARSEL.

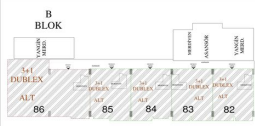


+18.50 KOTLU 5. KAT PLANI Ölçek:1/50
15295 ADA 2 PARSEL.

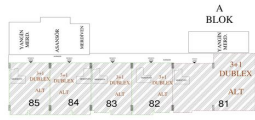


+18.50 KOTLU 5. KAT PLANI Ölçek:1/50
15295 ADA 2 PARSEL.

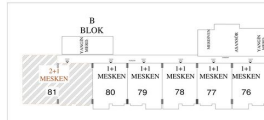




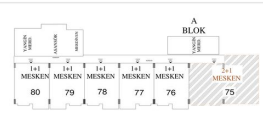
+40.10 KOTLU 11. KAT PLANI Ölçek:1/50
15295 ADA 2 PARSEL.



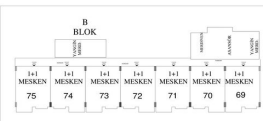
+40.10 KOTLU 11. KAT PLANI Ölçek:1/50
15295 ADA 2 PARSEL.



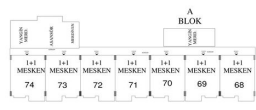
+36.50 KOTLU 10. KAT PLANI Ölçek:1/50
15295 ADA 2 PARSEL.



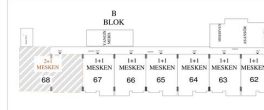
+36.50 KOTLU 10. KAT PLANI Ölçek:1/50
15295 ADA 2 PARSEL.



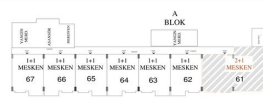
+32.90 KOTLU 9. KAT PLANI Ölçek:1/50
15295 ADA 2 PARSEL.



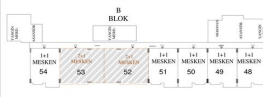
+32.90 KOTLU 9. KAT PLANI Ölçek:1/50
15295 ADA 2 PARSEL.



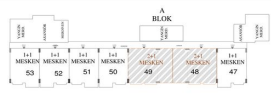
+30.30 KOTLU 8. KAT PLANI Ölçek:1/50
15295 ADA 2 PARSEL.



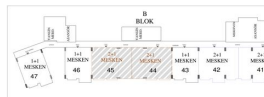
+30.30 KOTLU 8. KAT PLANI Ölçek:1/50
15295 ADA 2 PARSEL.



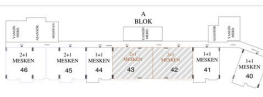
+22.10 KOTLU 6. KAT PLANI Ölçek:1/50
15295 ADA 2 PARSEL.



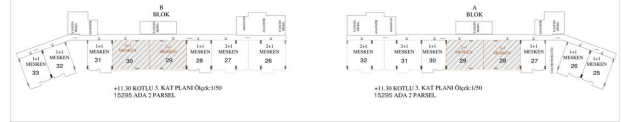
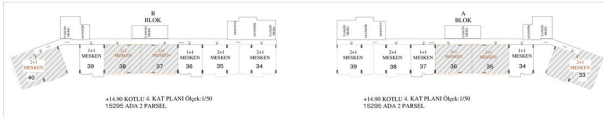
+22.10 KOTLU 6. KAT PLANI Ölçek:1/50
15295 ADA 2 PARSEL.



+18.50 KOTLU 5. KAT PLANI Ölçek:1/50
15295 ADA 2 PARSEL.



+18.50 KOTLU 5. KAT PLANI Ölçek:1/50
15295 ADA 2 PARSEL.



Scan the QR code to open the original page