

# Apartments in a new complex in Alanya, Oba (01328)



**250 000 € - 790 000 €**


**🏠** Floor area      **64 m<sup>2</sup> - 225 m<sup>2</sup>**

**🏠** Number of rooms      **1 bedroom**  
**2 bedrooms**  
**2+1 penthouse**  
**3+1 penthouse**  
**4+1 penthouse**

**🪑** Furnitures      **Partly**

 To the beach: **1150 m**

 Location: **Turkey, Alanya, Oba**

 To the airport: **42 km**

 To the city centre: **km**

## Options

- ✓ Panoramic view
- ✓ White goods
- ✓ Furniture
- ✓ Balcony/ Terrace
- ✓ Swimming pool
- ✓ Private territory
- ✓ Second beach line
- ✓ Outdoor parking
- ✓ 0% installment
- ✓ Garden
- ✓ Elevator
- ✓ Playground
- ✓ Generator

## Description

New apartments in the beloved Alanya, in the Oba area. The Oba district is a cozy refuge from the city noise, a place where it is comfortable to live, relax, and spend time with your family. It is in this area that we offer luxury apartments in a new residential complex.

The complex has a large and beautiful territory, with a landscaped garden and 24-hour security.

### **COMPLEX INFRASTRUCTURE:**

Outdoor swimming pool (200 sq.m.), indoor swimming pool (40 sq.m.), water slide, children's playground, garden, outdoor car parking, gazebo for relaxation, pool bar, gym, sauna, steam room, women's and men's locker rooms, showers and toilets in the indoor pool, conference room, TV room, and games room, concierge, central satellite system, intercom system, power generator, wireless internet, barbecue area, security 7/24.

### **THE PRICE OF APARTMENTS IN THE COMPLEX INCLUDES:**

Steel front door, interior doors, floor tiles or laminate, plasterboard, hidden lighting, bathroom closet, bathroom. Appliances, tiles in the bathroom, shower, faucets in the kitchen and bathroom, kitchen set, kitchen hood and gas hob (if the buyer wants an electric hob, he pays a difference of 500 lire), stainless steel sink in the kitchen, plastic windows with double glazing, aluminum railings on the balcony. Underfloor heating system (except for a heat pump or geyser) or installation of a water heating system with a battery (except for a heat pump or geyser), wood stove chimney, water heater, or solar panels.

### **PROJECT LOCATION:**

- To the hospital 20 m (across the road)
- To the dental clinic 30 m
- To the new bypass road, 500 m
- To the current bypass road 700 m
- Hypermarket Metro 750 m
- Kochtash store (Turkish analog of Ikea) 700 m
- To the new city hall (they will start building soon, the project is designed for two years) 1.5 km
- Alanya Shopping Center 1.9 km
- To the private school TED (one of the best in Alanya) 200 m
- To the sea 1.15 km

### **AREA OF APARTMENTS:**

- The area of 1+1 apartments is 52.50 sq.m. (together with a balcony of 64 sq.m.),

- The area of apartments 2 + 1 - 79.80 sq.m. (together with a balcony of 97 sq.m.),
- The area of penthouses 3 + 1 with a separate kitchen is 132.70 sq.m. (together with a balcony of 160 sq.m.), EAST SIDE
- The area of 3 + 1 penthouses with a separate kitchen is 129.10 sq.m. (together with a balcony of 157 sq.m.), WEST SIDE
- The area of 2+1 penthouses is 98 m2. (together with a balcony of 120 m2)
- The area of 3+1 penthouses is 153.5 m2. (together with a balcony 183 m2)
- The area of 4+1 penthouses is 202.5 m2. (together with a balcony of 225 m2)

**START OF CONSTRUCTION: 03/30/2017**

**COMPLETION OF CONSTRUCTION: 30.03.2019**

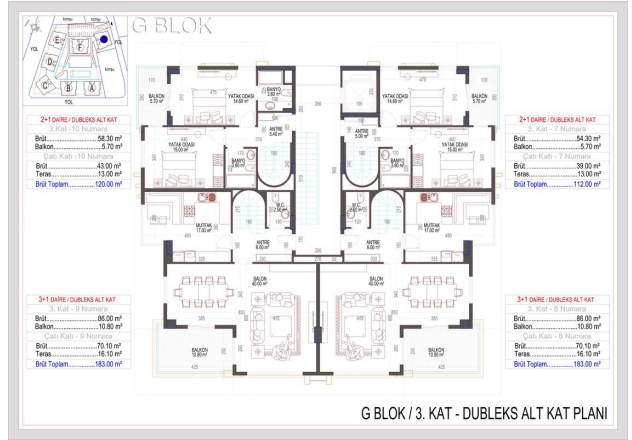
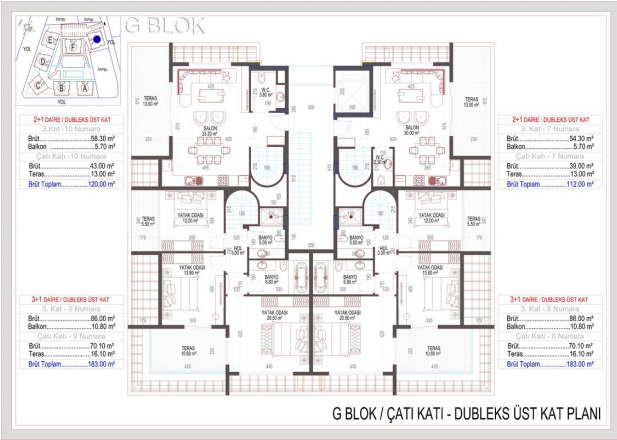
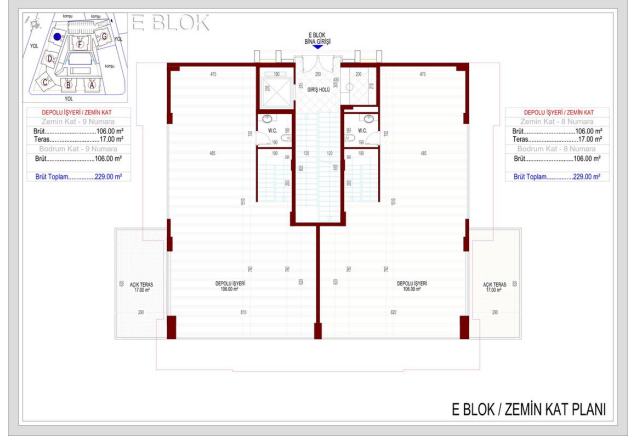
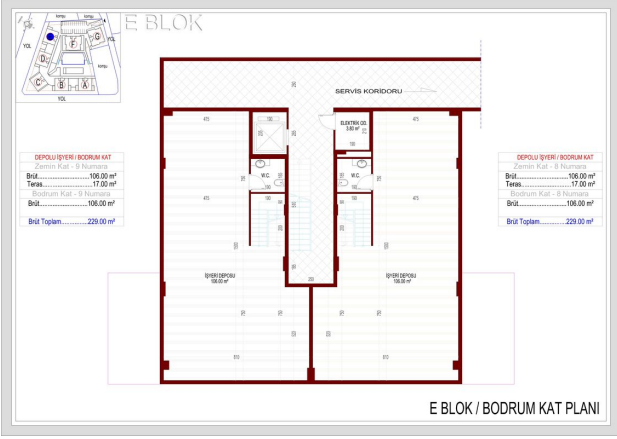
Updated 25.10.2024

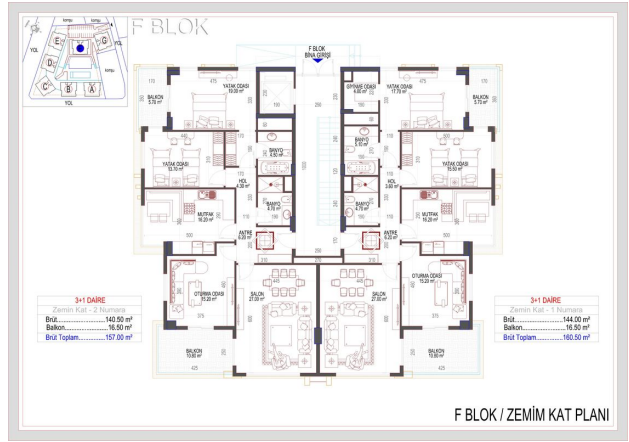
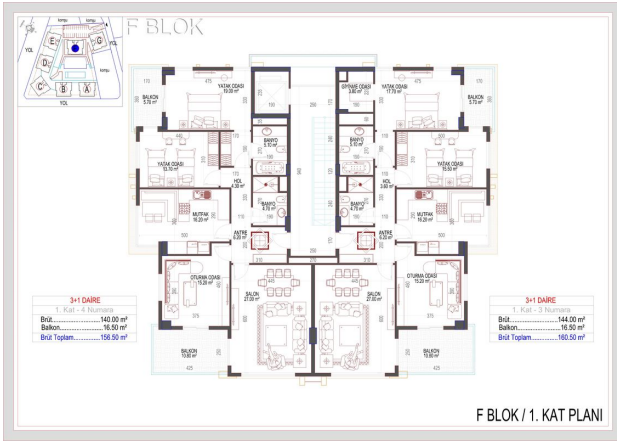
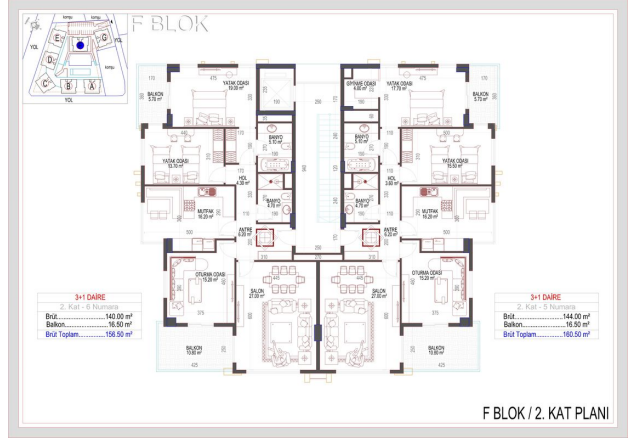
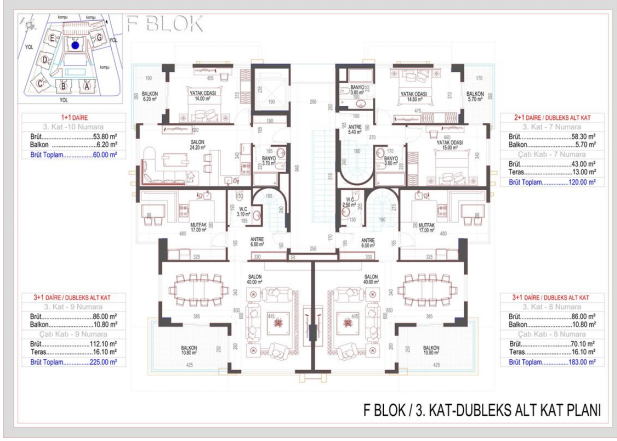
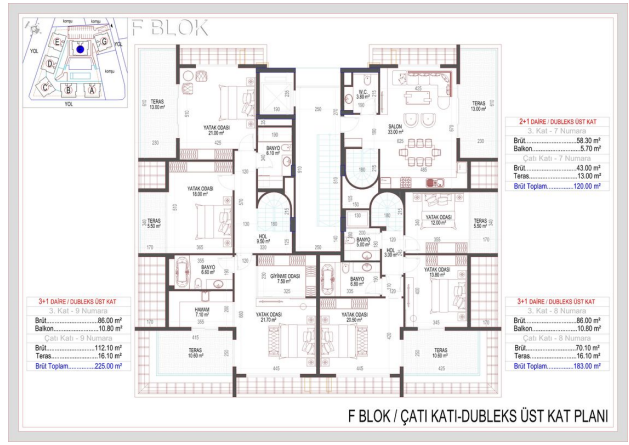
## Photo gallery



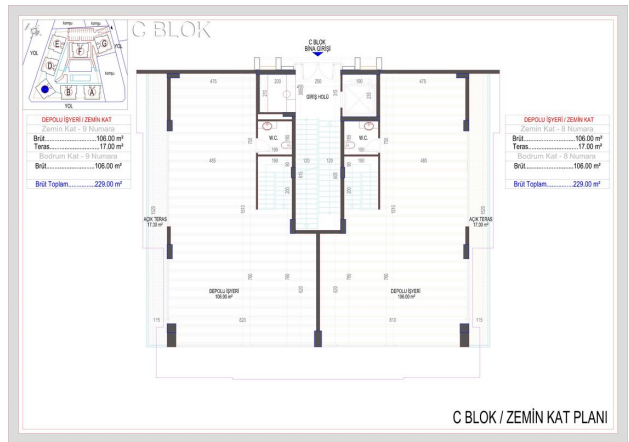
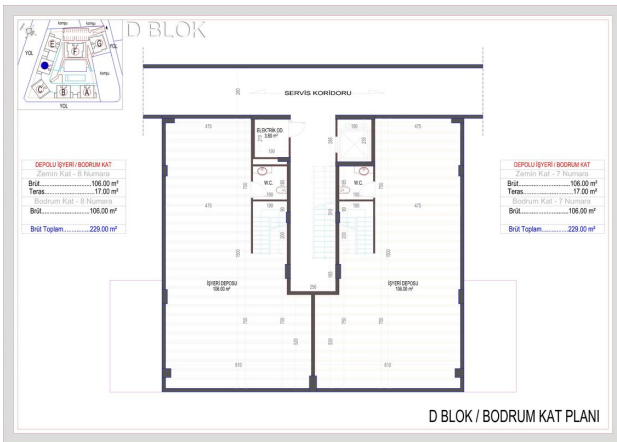
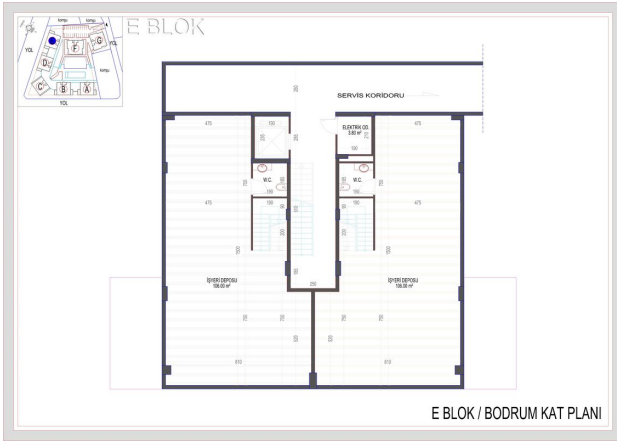
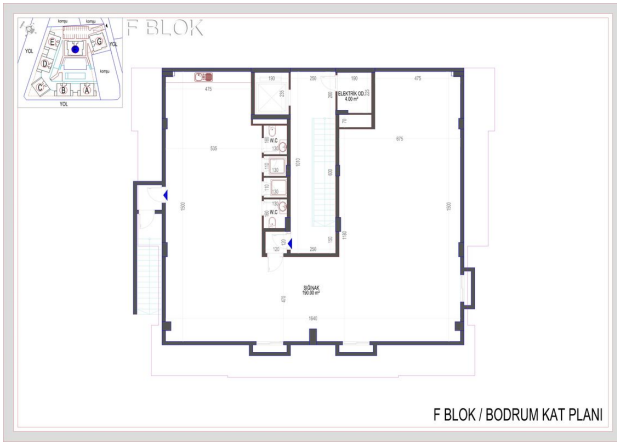


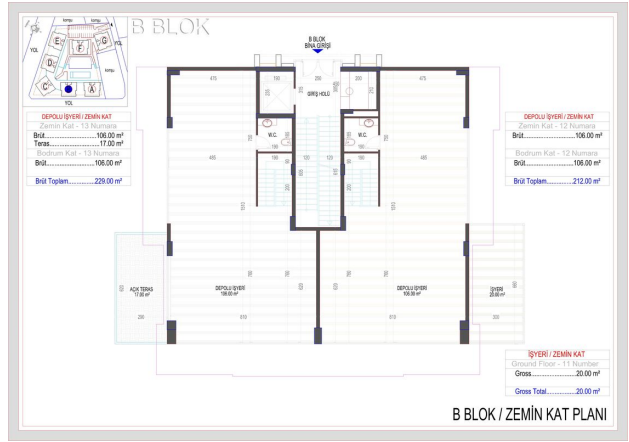
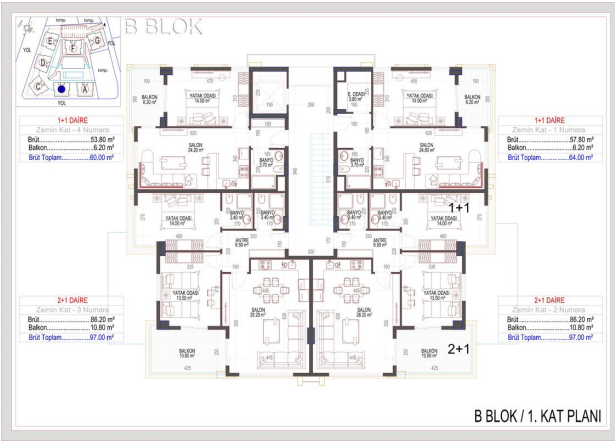
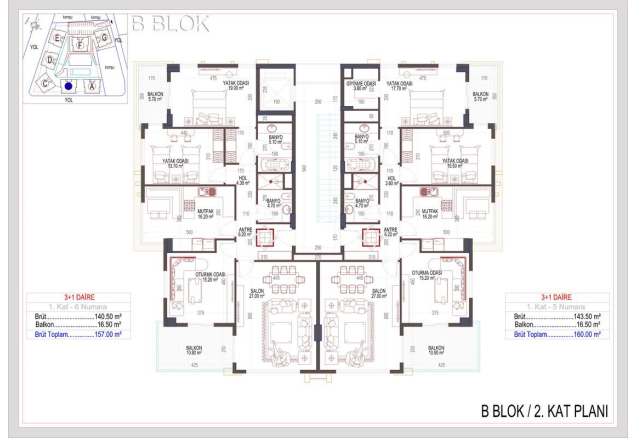
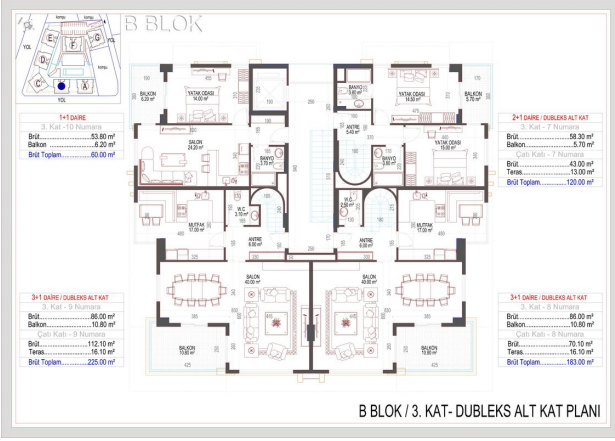
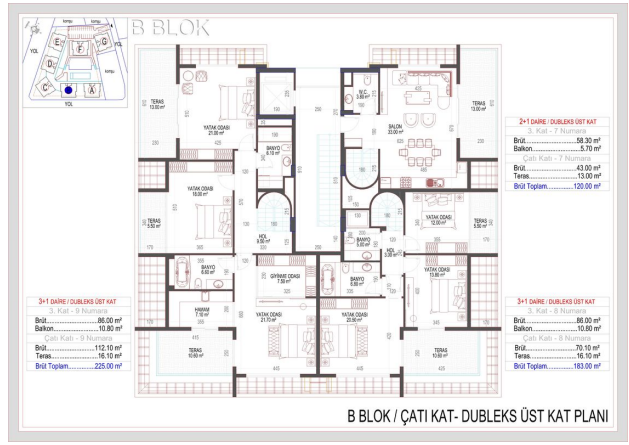
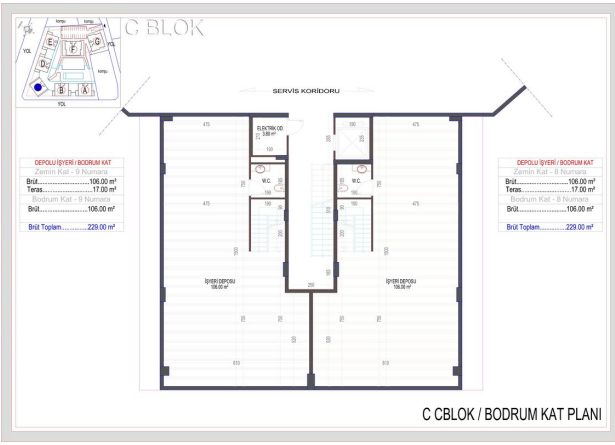














Scan the QR code to open the original page