

New residential complex in the center of Alanya (001463)



203 000 € - 569 000 €

🏠 Floor area **60 m² - 170 m²**

🏠 Number of rooms

- 1 bedroom**
- 2 bedrooms**
- 2+1 penthouse**
- 3+1 penthouse**

🛋️ Furnitures **Partly**

🌊 To the beach: **150 m**

📍 Location: **Turkey, Alanya**

✈️ To the airport: **42 km**



To the city
centre:

1 km

Options

- ✓ Sea view
- ✓ View of the city
- ✓ Panoramic view
- ✓ White goods
- ✓ Furniture
- ✓ Balcony/ Terrace
- ✓ Swimming pool
- ✓ Private territory
- ✓ Second beach line
- ✓ Outdoor parking
- ✓ 0% installment
- ✓ Garden
- ✓ Elevator
- ✓ Playground
- ✓ Generator

Description

New residential complex in the center of Alanya.

The residential complex is in the center of Alanya, within walking distance (150 m) from Cleopatra Beach, one of the most special and beautiful blue flag beaches in the world, where we are building a new and exclusive living space for you.

The complex is designed under the modern architectural approach of the new generation. It will be a project of 48 apartments, which combine views of the Mediterranean Sea, Alanya fortress, mountains, and pool.

Apartment types:

- 1+1 from 60m² to 65 m²
- 2+1 (duplex) - from 127m² to 140 m²
- 3+1 (duplex) - from 157m² to 172m²

Since the residence is for sale during the construction phase, changes to the project can be made at your special request. The project will be coordinated by architects, engineers, and technical staff to build serene living spaces to make you feel at home.

Our visuals give the feeling of being at home with an exemplary design. In all processes, the details of the images we present may vary. The furniture, appliances, and lighting fixtures shown in the images give you an idea of our commitment. Let the details change. The chic and outstanding designs shown in the images are sure to keep.

We would love to welcome you to be a part of our distinguished history in Alanya.

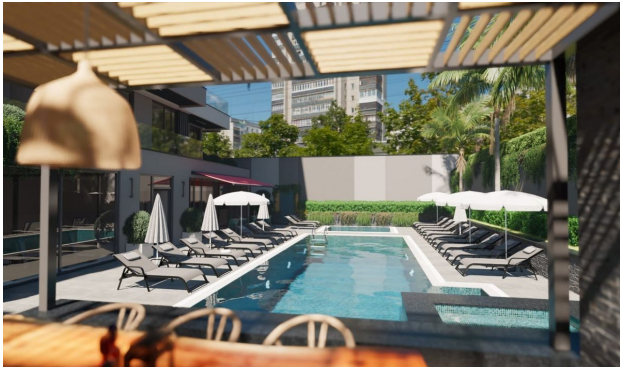
Социальная инфраструктура:

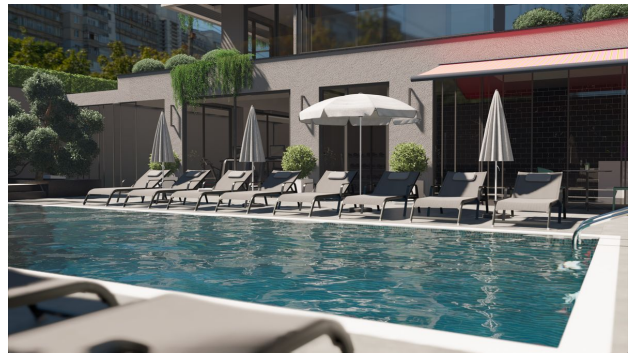
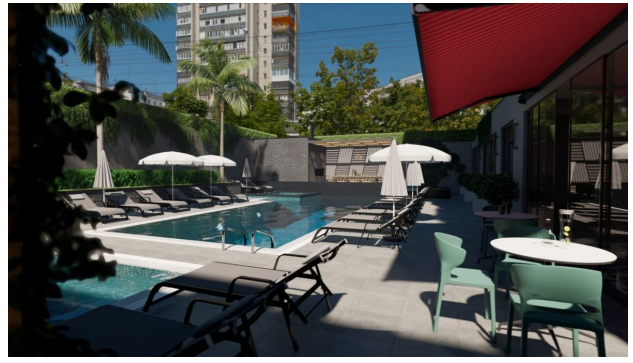
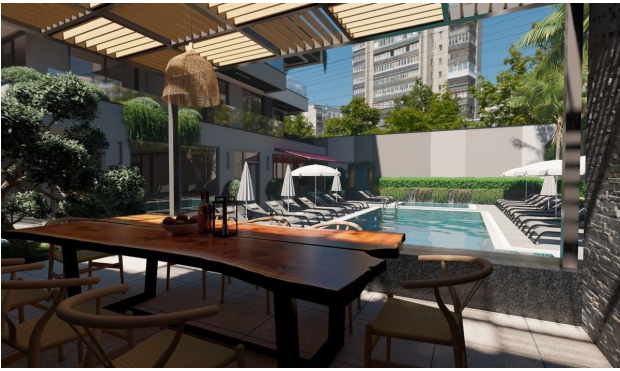
General characteristics of the project	Apartment Features
Reception and Lobby	Air conditioning in every room
cafe lobby	Instant water heater
2 lifts	American panel interior doors
Outdoor pool with jacuzzi	steel entrance door
Children's swimming pool	PVC double glazing

Indoor pool	Porcelain and Granite Ceramic Floor Tiles
Winter Garden	Built-in kitchen cabinets
Barbecue Garden	Marble worktop in the kitchen
Pool Cafe	Built-in bathroom cabinets
Turkish sauna	Aluminum and glass balcony railings
Sauna	Special wall coverings
Fitness	Color video intercom
Generator	
Semi-covered street parking	
satellite system	
WiFi connection	
Videocam	
7/24 private helpdesk	

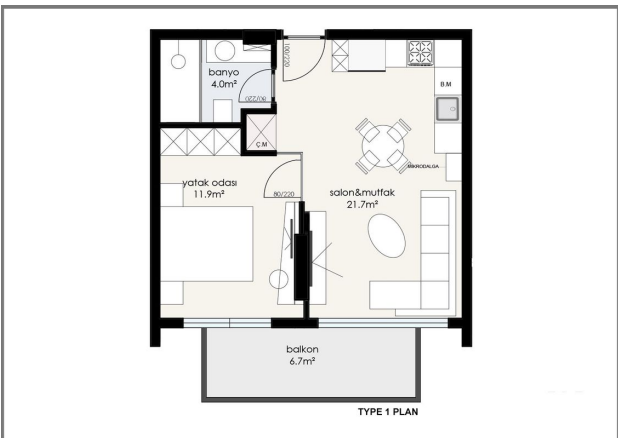
Updated 13.11.2024

Photo gallery





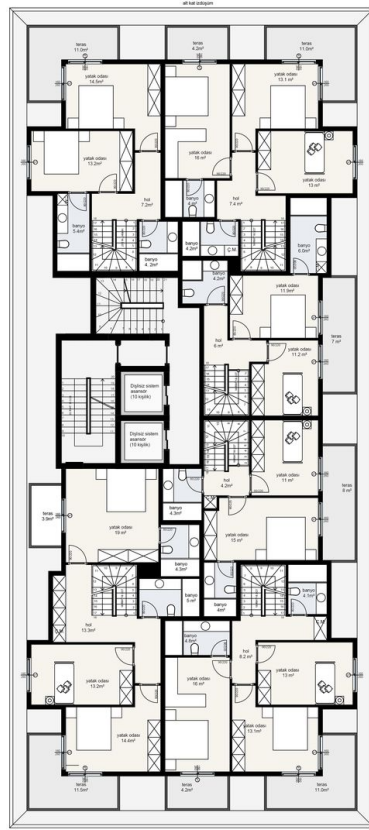








01c



01d



Scan the QR code to open the original page