








# Apartments from a well-known developer in Mahmutlar, Alanya (003473)

## 2. KAT PLANI



200 000 €

-  Floor area 35 m<sup>2</sup> - 90 m<sup>2</sup>
-  Number of rooms 1 bedroom
-  Furnitures Partly

-  To the beach: **1200 m**
-  Location: **Turkey, Alanya, Mahmutlar**
-  To the airport: **42 km**
-  To the city centre: **12 km**

## Options

- ✓ Sea view
- ✓ Mountain view
- ✓ Panoramic view
- ✓ Balcony/ Terrace
- ✓ Swimming pool
- ✓ Private territory
- ✓ Outdoor parking
- ✓ 0% installment
- ✓ Garden
- ✓ Elevator
- ✓ Playground
- ✓ Generator

## Description

Our company presents you with its new project - a new premium-class residential complex at comfortable prices.

The complex will include 200 residences equipped with panoramic windows overlooking the sea and mountains. Your choice will be presented with various layout options ranging from 35

to 90 sq.m.

Guests and residents of the complex will have access to many services and amenities, including several swimming pools, a rooftop terrace, a sauna, and a luxurious Turkish hammam. You will also have access to a modern and fully-equipped fitness center, where you can keep fit throughout the day. Besides all the above, the complex has a playground, many green areas, and gazebos for recreation and fishing. On the top floor, there is a spacious lounge area with a beautiful landscape.

Residents of the complex will have access to round-the-clock concierge services. Wi-Fi is available throughout the complex. The peace of the residents is ensured by a 24-hour security service.

Well-thought-out engineering infrastructure of the complex is the key to a high standard of living. Near the complex, there are various shops, supermarkets, a public school, as well as a public hospital. The center of Mahmutlar can be reached in 10 minutes.

**Distance to the sea 1200 meters.**

**Start of construction - May 2021.**

**The completion date of the complex is August 2022.**

**35% - down payment, installment plan until the end of construction**

**Specifications:**

American type electric heater;

□ PVC windows with double glazing;

□ ceramic floor tiles;

□ hidden ceiling lighting;

□ kitchen set;

□ built-in cabinets in the bathroom.

**Infrastructure:**

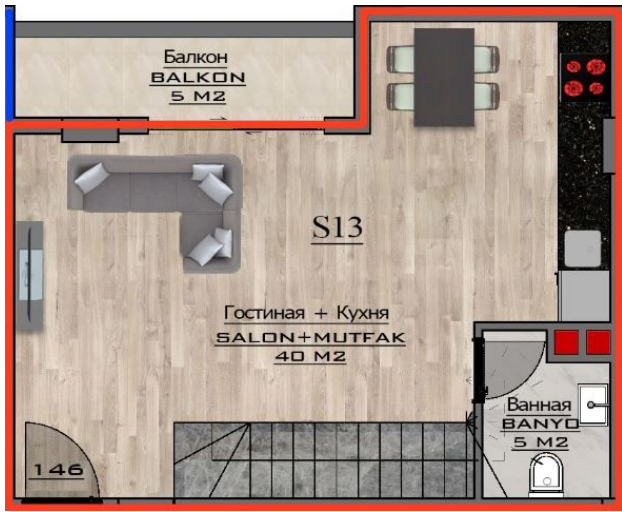
- outdoor and children's pools;
- Co-working area on the roof
- Co-kitchen area on the roof
- green recreation area;
- gazebos for recreation and fishing;
- barbecue area;
- playground;
- hammam;
- sauna;
- fitness center;
- round-the-clock concierge services;
- electric generator;
- elevator;
- Wi-Fi;
- intercom;
- security and video surveillance 24/7.

**Updated 22.02.2024**

## **Photo gallery**







9. KAT PLANI



8. KAT PLANI



6. KAT PLANI



5. KAT PLANI

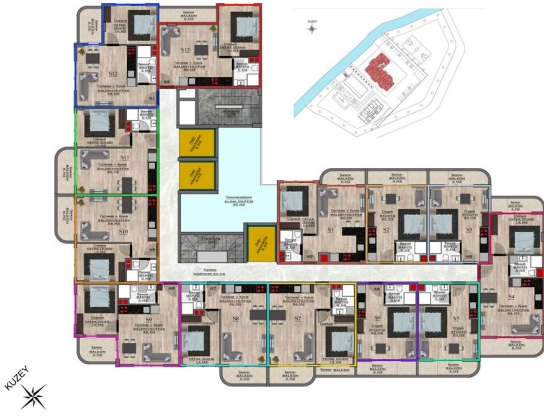


4. KAT PLANI





3. KAT PLANI



FOA HILLS B - BLOK (BLOK B)  
DAIRE TIPI (Tipe apartmanı) DUBLEX (S13)

|                                |       |
|--------------------------------|-------|
| SALON-MUTFAK (Oturma + Mutfak) | 40 M2 |
| YATAK ODASI (Sizman)           | 12 M2 |
| YATAK ODASI (Sizman)           | 9 M2  |
| BANYO (Banyo)                  | 5 M2  |
| BANYO (Banyo)                  | 5 M2  |
| BALKON (Balcony)               | 5 M2  |

BRÜT ALAN (Grossfläche) 76 M2

KAT PLANI (Etagenplan)

FOA HILLS B - BLOK (BLOK B)  
DAIRE TIPI (Tipe apartmanı) LOFT (S8)

|                                |       |
|--------------------------------|-------|
| SALON-MUTFAK (Oturma + Mutfak) | 38 M2 |
| YATAK ODASI (Sizman)           | 14 M2 |
| GALERİ BOŞLUĞU (Galerie)       | 19 M2 |
| BANYO (Banyo)                  | 4 M2  |
| BANYO (Banyo)                  | 5 M2  |
| BALKON (Balcony)               | 10 M2 |

BRÜT ALAN (Grossfläche) 90 M2

KAT PLANI (Etagenplan)

FOA HILLS B - BLOK (BLOK B)  
DAIRE TIPI (Tipe apartmanı) LOFT (S11)

|                                |       |
|--------------------------------|-------|
| SALON-MUTFAK (Oturma + Mutfak) | 38 M2 |
| YATAK ODASI (Sizman)           | 14 M2 |
| GALERİ BOŞLUĞU (Galerie)       | 19 M2 |
| BANYO (Banyo)                  | 4 M2  |
| BANYO (Banyo)                  | 5 M2  |
| BALKON (Balcony)               | 10 M2 |

BRÜT ALAN (Grossfläche) 90 M2

KAT PLANI (Etagenplan)

FOA HILLS B - BLOK (BLOK B)  
DAIRE TIPI (Tipe apartmanı) LOFT (S7)

|                                |       |
|--------------------------------|-------|
| SALON-MUTFAK (Oturma + Mutfak) | 38 M2 |
| YATAK ODASI (Sizman)           | 14 M2 |
| GALERİ BOŞLUĞU (Galerie)       | 19 M2 |
| BANYO (Banyo)                  | 4 M2  |
| BANYO (Banyo)                  | 5 M2  |
| BALKON (Balcony)               | 10 M2 |

BRÜT ALAN (Grossfläche) 90 M2

KAT PLANI (Etagenplan)





FOA HILLS B - BLOK (BLOK B)  
DAIRE TİPİ DUBLEX (S13)  
(Tüm katları)

|                                 |       |
|---------------------------------|-------|
| SALON-MUTFAK (Göstane + Kuchin) | 40 M2 |
| YATAK ODASI (Siznane)           | 13 M2 |
| YATAK ODASI (Siznane)           | 9 M2  |
| BANYO (Banyo)                   | 5 M2  |
| BANYO (Banyo)                   | 5 M2  |
| BALKON (Balcony)                | 5 M2  |

BRÜT ALAN (Obşam ploxadka) 76 M2

KAT PLANI (Tüm etajlar)

СІМІР КІРЕЛІ

FOA HILLS B - BLOK (BLOK B)  
DAIRE TİPİ (Tüm katları) LOFT (S8)

|                                 |       |
|---------------------------------|-------|
| SALON-MUTFAK (Göstane + Kuchin) | 38 M2 |
| YATAK ODASI (Siznane)           | 14 M2 |
| GALERİ BOSLUĞU (ГАЛЕРЕЙ)        | 19 M2 |
| BANYO (Banyo)                   | 4 M2  |
| BANYO (Banyo)                   | 3 M2  |
| BALKON (Balcony)                | 10 M2 |

BRÜT ALAN (Obşam ploxadka) 90 M2

KAT PLANI (Tüm etajlar)

СІМІР КІРЕЛІ

FOA HILLS B - BLOK (BLOK B)  
DAIRE TİPİ (Tüm katları) LOFT (S11)

|                                 |       |
|---------------------------------|-------|
| SALON-MUTFAK (Göstane + Kuchin) | 38 M2 |
| YATAK ODASI (Siznane)           | 14 M2 |
| GALERİ BOSLUĞU (ГАЛЕРЕЙ)        | 19 M2 |
| BANYO (Banyo)                   | 4 M2  |
| BANYO (Banyo)                   | 5 M2  |
| BALKON (Balcony)                | 10 M2 |

BRÜT ALAN (Obşam ploxadka) 90 M2

KAT PLANI (Tüm etajlar)

СІМІР КІРЕЛІ



**ÇATI KATI PLANI**



**11. KAT PLANI**



**10. KAT PLANI**



**9. KAT PLANI**





8. KAT PLANI



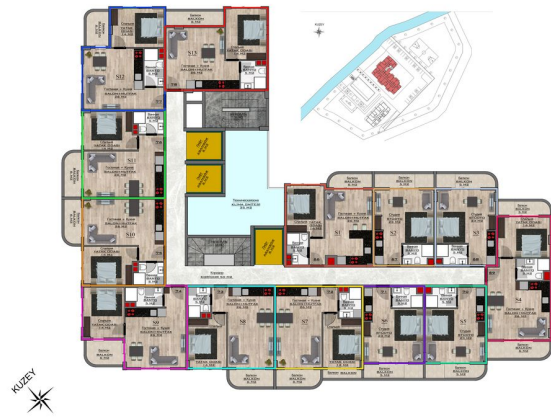
7. KAT PLANI



6. KAT PLANI



5. KAT PLANI



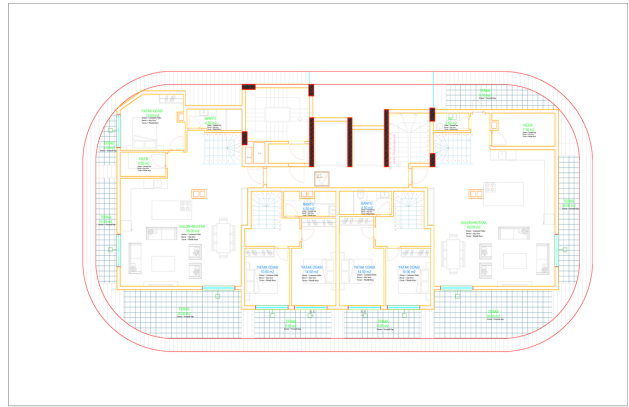
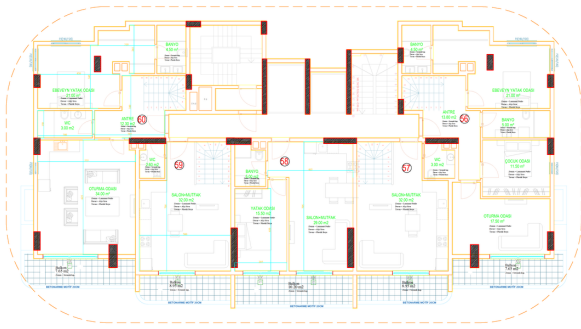
4. KAT PLANI



3. KAT PLANI







**FOA HILLS B - BLOK (BLOK B)**  
**DAIRE TİPİ (Тип квартиры) DUBLEX (S13)**

|                                 |       |
|---------------------------------|-------|
| SALON+MUTFAK (Гостиная + Кухня) | 40 M2 |
| YATAK ODASI (Спальня)           | 12 M2 |
| YATAK ODASI (Спальня)           | 9 M2  |
| BANYO (Ванная)                  | 5 M2  |
| BANYO (Ванная)                  | 5 M2  |
| BALKON (Балкон)                 | 5 M2  |

BRÜT ALAN (Общая площадь) 76 M2

KAT PLANI (План этажа)

**FOA HILLS B - BLOK (BLOK B)**  
**DAIRE TİPİ (Тип квартиры) LOFT (S8)**

|                                 |       |
|---------------------------------|-------|
| SALON+MUTFAK (Гостиная + Кухня) | 38 M2 |
| YATAK ODASI (Спальня)           | 14 M2 |
| GALERİ BOŞLUĞU (Галерея)        | 19 M2 |
| BANYO (Ванная)                  | 4 M2  |
| BANYO (Ванная)                  | 5 M2  |
| BALKON (Балкон)                 | 10 M2 |

BRÜT ALAN (Общая площадь) 90 M2

KAT PLANI (План этажа)

**FOA HILLS B - BLOK (BLOK B)**  
**DAIRE TİPİ (Тип квартиры) LOFT (S11)**

|                                 |       |
|---------------------------------|-------|
| SALON+MUTFAK (Гостиная + Кухня) | 38 M2 |
| YATAK ODASI (Спальня)           | 14 M2 |
| GALERİ BOŞLUĞU (Галерея)        | 19 M2 |
| BANYO (Ванная)                  | 4 M2  |
| BANYO (Ванная)                  | 5 M2  |
| BALKON (Балкон)                 | 10 M2 |

BRÜT ALAN (Общая площадь) 90 M2

KAT PLANI (План этажа)

**FOA HILLS B - BLOK (BLOK B)**  
**DAIRE TİPİ (Тип квартиры) LOFT (S7)**

|                                 |       |
|---------------------------------|-------|
| SALON+MUTFAK (Гостиная + Кухня) | 38 M2 |
| YATAK ODASI (Спальня)           | 14 M2 |
| GALERİ BOŞLUĞU (Галерея)        | 19 M2 |
| BANYO (Ванная)                  | 4 M2  |
| BANYO (Ванная)                  | 5 M2  |
| BALKON (Балкон)                 | 10 M2 |

BRÜT ALAN (Общая площадь) 90 M2

KAT PLANI (План этажа)



FOA HILLS B - BLOK (BLOK B)  
DAIRE TİPİ (Tipe Apartmanı) LOFT (S7)

|                                    |       |
|------------------------------------|-------|
| SALON-MUTFAK<br>(Гостиная - Кухня) | 38 M2 |
| YATAK ODASI (Спальня)              | 14 M2 |
| GALERİ BÖLÜĞÜ (Галерея)            | 19 M2 |
| BANYO (Ванная)                     | 4 M2  |
| BANYO (Ванная)                     | 3 M2  |
| BALKON (Балкон)                    | 10 M2 |
| BRÜT ALAN (Общая площадь)          | 90 M2 |

KAT PLANI (План этажа)

ŞEHİR KUZEY

**ÇATI KATI PLANI**

KUZEY

**11. KAT PLANI**

KUZEY

**10. KAT PLANI**

KUZEY

**9. KAT PLANI**

KUZEY

**8. KAT PLANI**

KUZEY

7. KAT PLANI



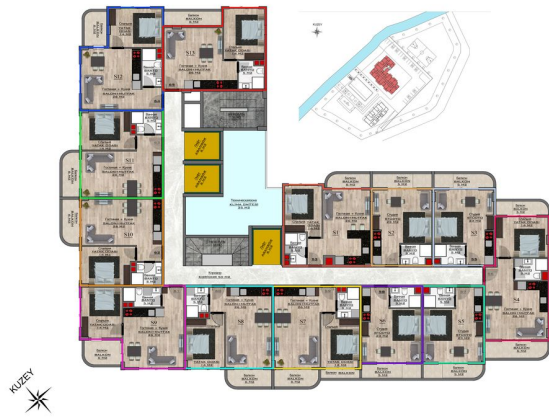
6. KAT PLANI



5. KAT PLANI



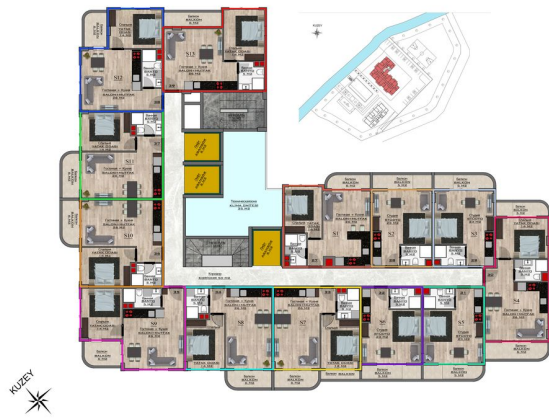
4. KAT PLANI

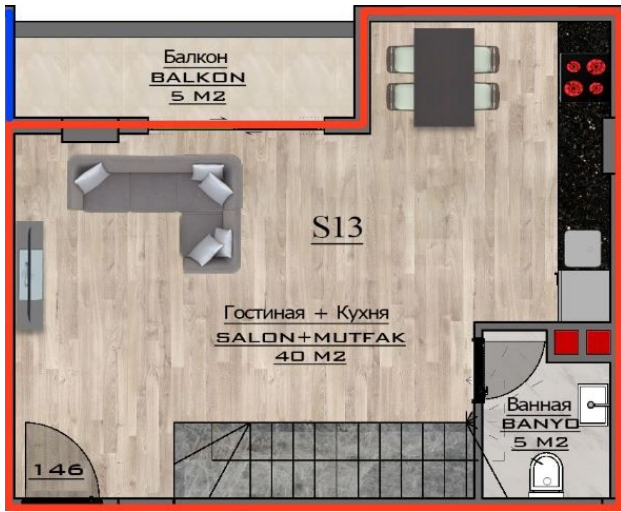


3. KAT PLANI

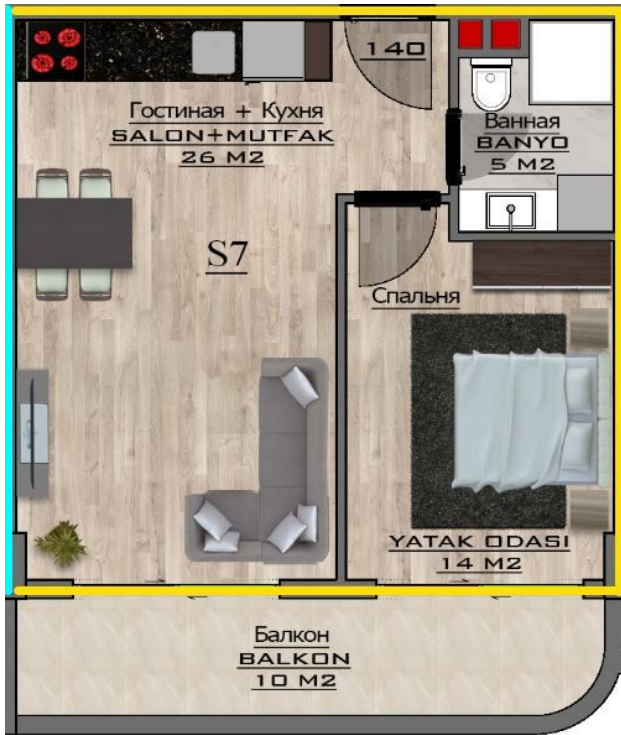
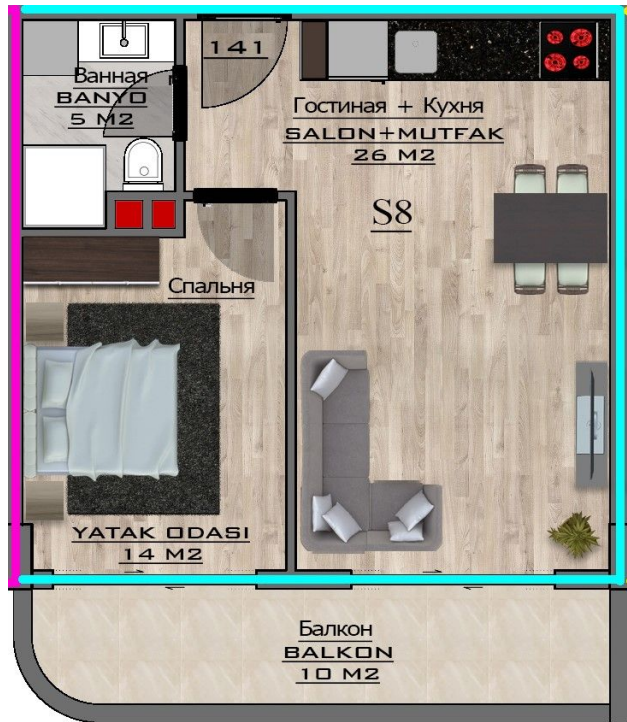


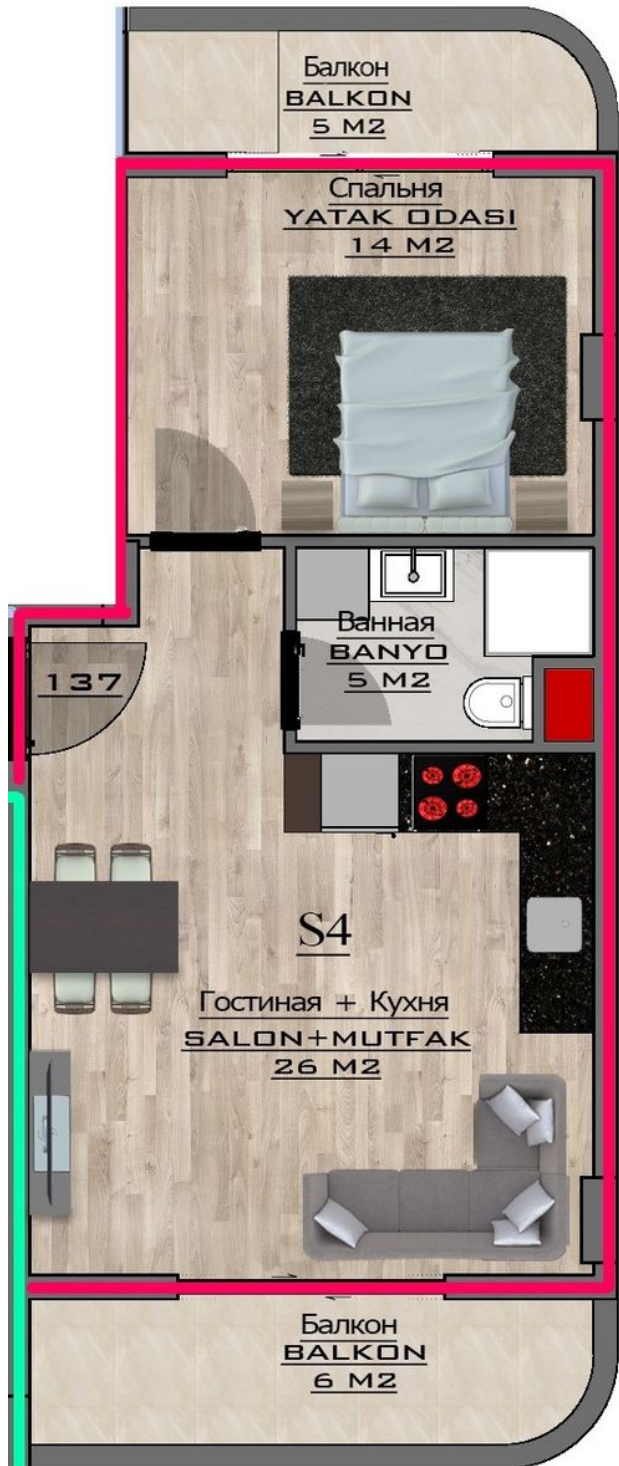
2. KAT PLANI



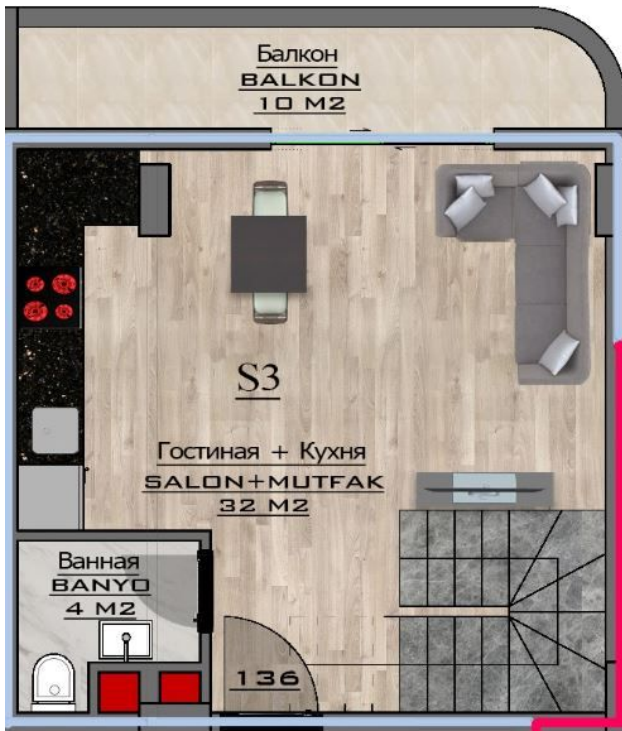


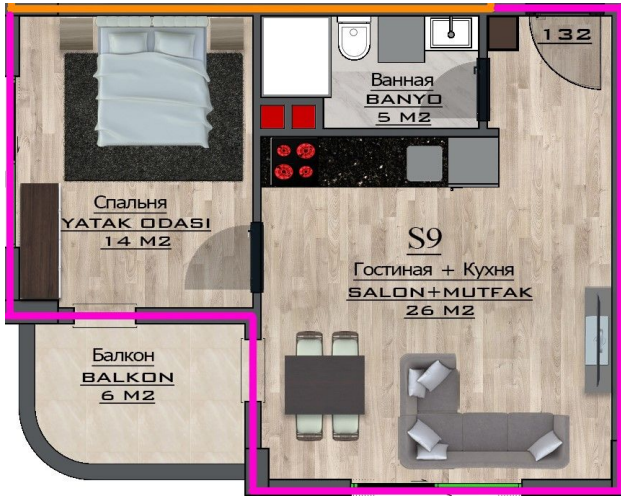


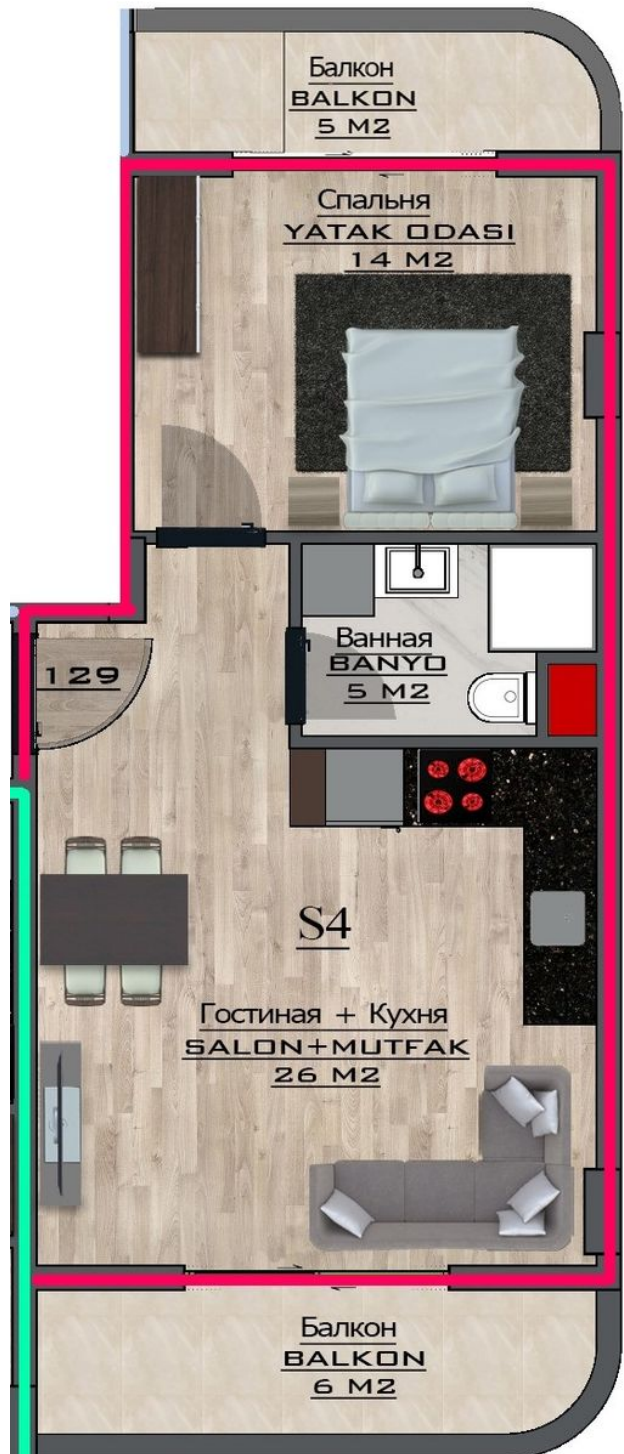










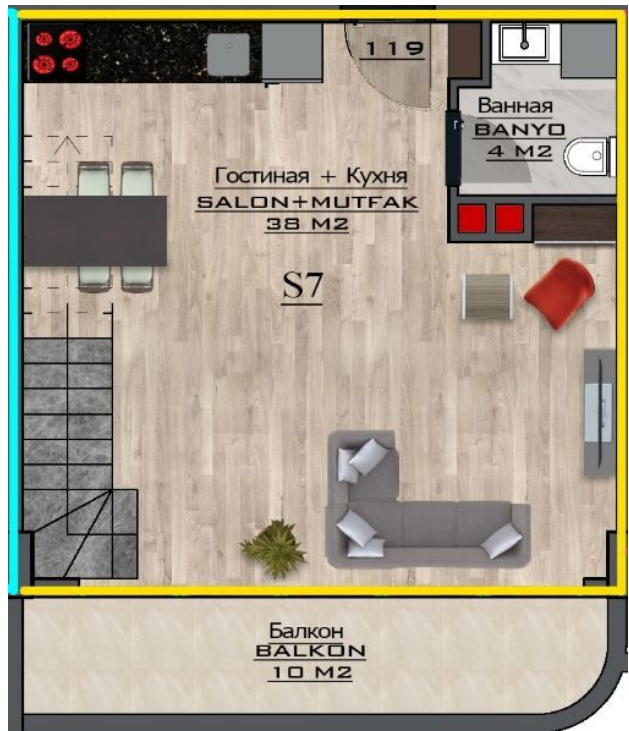


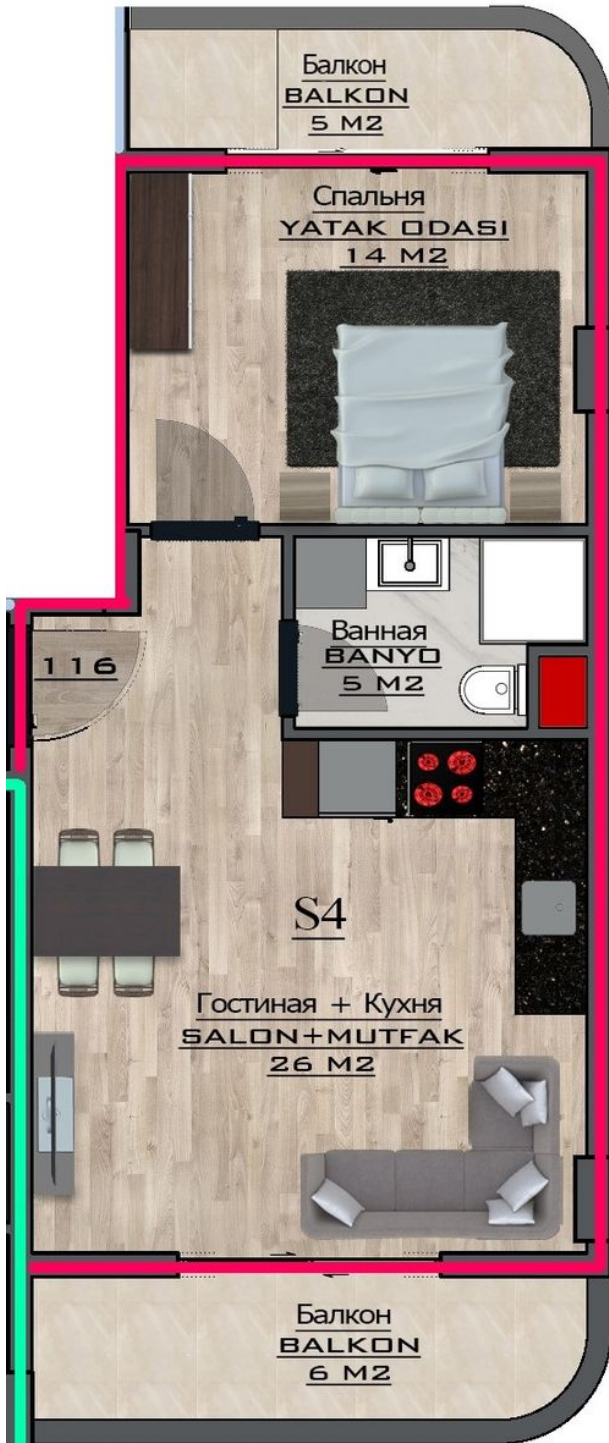




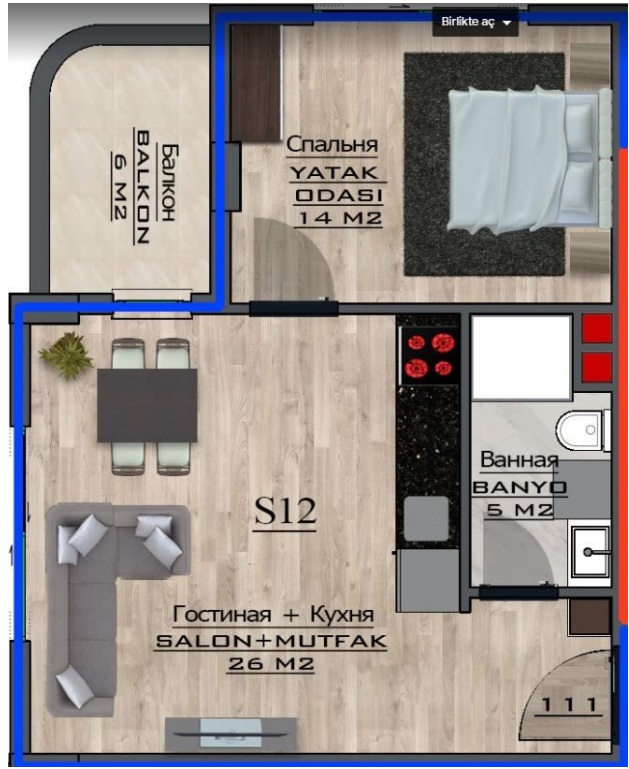
































Scan the QR code to open the original page