




New residential complex in Kestel, the favorite area of ☒☒Alanya (012443)



200 000 €

-  Floor area **43 m² - 110 m²**
-  Number of rooms **1 bedroom**
2 bedrooms
3 bedrooms
-  Furnitures **Partly**
-  To the beach: **365 m**
-  Location: **Turkey, Alanya, Kestel**

 To the airport: 27 km

 To the city
centre: km

Options

- ✓ View of the city
- ✓ Panoramic view
- ✓ White goods
- ✓ Furniture
- ✓ Balcony/ Terrace
- ✓ Swimming pool
- ✓ Private territory
- ✓ Second beach line
- ✓ Outdoor parking
- ✓ 0% installment
- ✓ Garden view
- ✓ Playground
- ✓ Generator

Description

We present a new project in Kestel, the favorite area of Alanya.

Kestel is one of the most picturesque and green administrative districts in Alanya. Geographically, it is located 9 kilometers from the city center between Tosmur and Mahmutlar.

The Kestel area in Alanya attracts foreign investors and vacationers with its mesmerizing landscapes of Mediterranean nature, coniferous groves, citrus orchards, the freshness of the

Dimchay mountain river, and many other advantages.

The village is very well maintained and cozy. Active construction of real estate in Kestel started a few years ago. The first and second coastlines are quickly built up with modern residential complexes and houses. There are few hotels and this is the main reason for the calm atmosphere, even in the tourist season.

One of the most popular places in Kestel is a well-maintained embankment equipped with everything necessary for walking and relaxing., fountains, a waterfall and an aqueduct, gazebos, barbecue areas, children's and sports grounds with exercise equipment, walking and cycling paths, comfortable benches, small cafes are at the service of residents and guests of the city. The embankment, thanks to the efforts of the local municipality, is buried in decorative greenery, fragrant multi-colored flower beds, and original landscape design elements.

The project was created in a neoclassical architectural style.

Apartment types:

- 20 apartments - 15 apartments 1+1 (50-54 m2) - 2 units
- 3+1 duplex - 1 unit 2+1 duplex (152 m2)
- 2 units garden duplex (100 m2)

Project features and social zones:

- Open pool
- Fitness
- Sauna
- Hall
- Cafeteria
- Outdoor car park
- video system
- garden lighting
- video intercom

Location Features

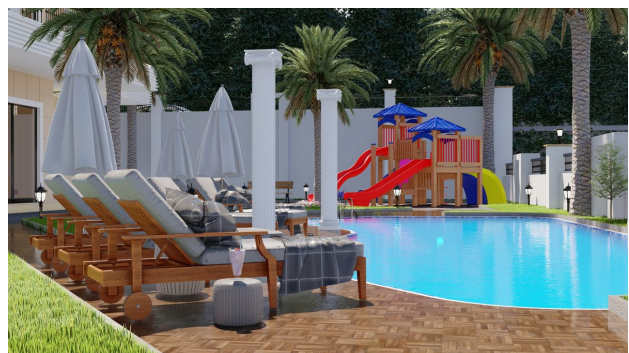
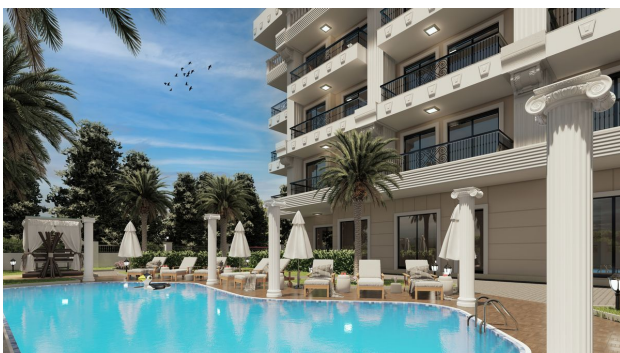
365 m to the sea, 150 m to Go-Carta, 200 m to the College of Nature

Construction start date -01.04.2022

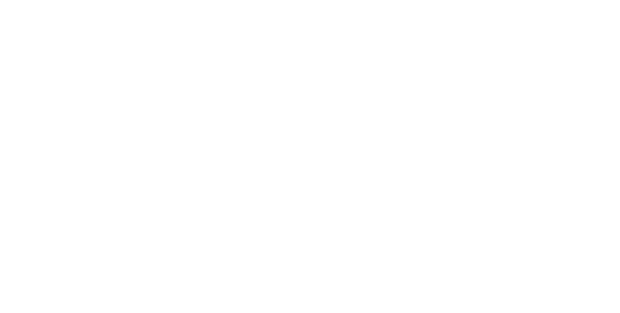
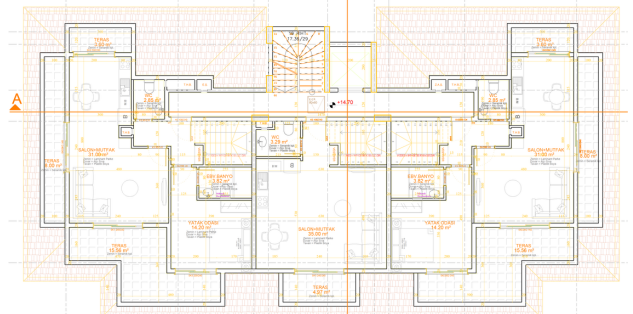
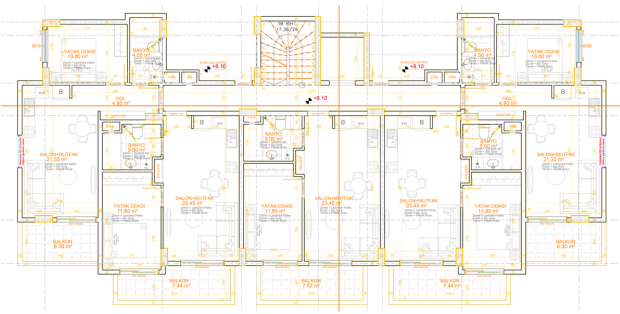
Construction completion date - 05/01/2023

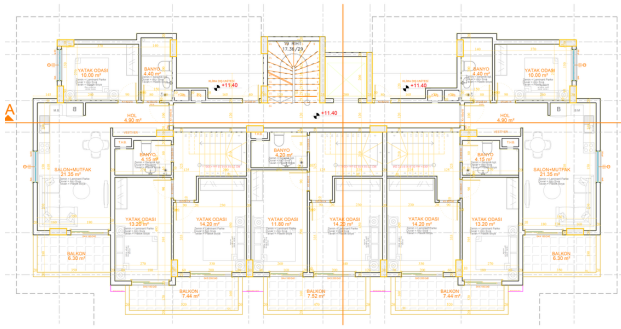
Updated 15.12.2023

Photo gallery









Scan the QR code to open the original page