

# Apartment in a new residence in the popular area of ☒☒Mahmutlar, Alanya (002438)



**109 500 € - 169 500 €**

**🏠 Floor area**      **48 m<sup>2</sup> - 120 m<sup>2</sup>**


**🏠 Number of rooms**

- 1 bedroom**
- 2 bedrooms**
- 3 bedrooms**
- 4 bedrooms**

**🪑 Furnitures**      **Partly**

**🌊 To the beach:**      **450 m**

**📍 Location:**      **Turkey, Alanya, Mahmutlar**

 To the airport: **26 km**

 To the city  
centre: **13 km**

## Options

- ✓ View of the city
- ✓ Panoramic view
- ✓ Balcony/ Terrace
- ✓ Swimming pool
- ✓ Outdoor parking
- ✓ 0% installment
- ✓ Garden
- ✓ Elevator
- ✓ Playground
- ✓ Generator

## Description

A new project of luxury apartments in the Mahmutlar area. The complex comprises one block of a land plot of 1038 m<sup>2</sup>.

The complex is located just 450 meters from the sea and within walking distance of many social facilities in the city. The infrastructure of the new project is replete with diversity: from an outdoor pool to a spa area and a children's area. Here, everything is thought out to the smallest detail. The complex includes apartments of different layouts: from 1 to 1 to two-level 4 + 1, 46 apartments.

## Distances:

- Sea and beach: 450 meters

- Gazipasa Airport: 26 km
- Antalya Airport: 140 km
- Center of Mahmutlar: 1 km
- Farmer's market: 200 m
- Center of Alanya: 13 km

## **Infrastructure:**

- Gym
- Sauna/steam/salt room
- Spa area
- Gym
- Open pool
- Jacuzzi
- Massage room
- Play area with billiards
- Playground
- Lobby bar
- Conference hall
- Generator
- Concierge / Gardener
- Parking
- 24/7 security and video surveillance system

## **Characteristics of the apartments:**

- Balcony 6m<sup>2</sup>

- Fine finishing
- Built-in kitchen
- A set of sanitary ware in bathrooms
- Northwest, west, and south sides

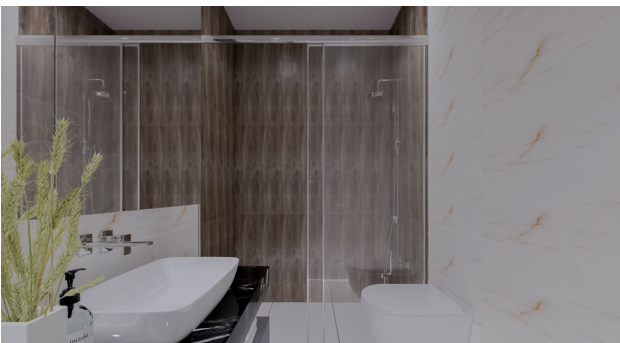
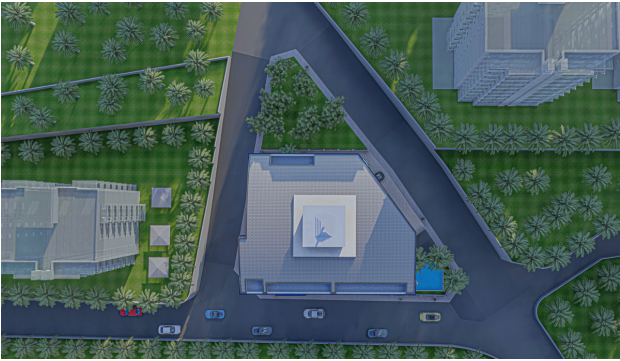
Payment by installments, down payment, is 30%. Completion of construction and commissioning of the facility - in January 2023.

Mahmutlar is a rapidly developing resort on the Turkish Mediterranean coast. It is located 10 km from the city of Alanya, and 145 km from Antalya. In the east, it borders the Kargicak region, in the west - on Kestel. In the north, it is surrounded by the Taurus Mountains. Currently, this place is very popular with budget tourists, as well as those who want to buy an apartment in Turkey or rent a house for a few months. And no wonder, because Mahmutlar is experiencing a real construction boom. Every year more and more new housing is being built, while prices are moderate.

**Updated 19.07.2024**

## Photo gallery







GROUND-1-2-3 FLOOR PLAN



-1 BASEMENT FLOOR PLAN



4 FLOOR PLAN



GROUND-1-2-3 FLOOR PLAN



4 FLOOR PLAN



GROUND-1-2-3 FLOOR PLAN



Scan the QR code to open the original page