

Residential complex from the developer in Alanya (002478)



250 000 €

🏠 Floor area **103 m² - 30437 m²**

🏠 Number of rooms **2 bedrooms**
3 bedrooms
2+1 penthouse
3+1 penthouse
4+1 penthouse
5+1 penthouse

🪑 Furnitures **Partly**

🌊 To the beach: **1300 m**

 Location: **Turkey, Alanya**

 To the airport: **40 km**

 To the city
centre: **1000 km**

Options

- ✓ Sea view
- ✓ View of the city
- ✓ Panoramic view
- ✓ White goods
- ✓ Furniture
- ✓ Balcony/ Terrace
- ✓ Swimming pool
- ✓ Private territory
- ✓ Second beach line
- ✓ Outdoor parking
- ✓ 0% installment
- ✓ Garden
- ✓ Elevator
- ✓ Playground
- ✓ Generator

Description

Filled with traces of history and magnificent natural landscapes, Alanya today has become one of the most vibrant resorts in Turkey. Its modern and cosmopolitan atmosphere is the reason many tourists from all over the world spend their holidays in Alanya all year round. This area

attracts tourists with affordable prices, glorious weather, sandy beaches, historical sites, and gourmet cuisine. There are flights to Antalya all year round and Alanya Airport is 1.5 hours away by car. Flights from all major cities in Turkey and Europe arrive at Antalya International Airport.

Project

Start date: 10/15/2021

End date: 04/15/2023

Our project is on the bypass road of Alanya, on the 2595 block and 6 sections. In an area of 4538 m². Antares City.

□ 12 sq. 2 + 1

□ 9 sq. 2 + 1 with a separate kitchen

□ 12 sq. 3 + 1 with a separate kitchen

□ 5 sq. 3 + 1 with separate kitchen (duplex)

□ 2 sq. 4 + 1 with separate kitchen (duplex)

□ 4 sq. 5 + 1 with separate kitchen (duplex)

Distance:

- Sea and beach: 1.3 km
- Gazipasa Airport: 40 km.
- Antalya Airport: 130 km.
- Center of Alanya: 1 km.
- Hospital: 4 km.

General characteristics:

- Swimming pool
- Children's park

- Indoor playground
- Caretaker, Kapidzhi
- Barbecue areas
- Surveillance cameras
- Generator
- Open and closed parking
- Aquapark
- Fitness

Characteristics of the apartment:

- Kitchen Cabinet
- Built-in bathroom set
- Ceramic flooring
- Concealed LED lighting in ceilings
- Sound and heat-insulated window system
- Quality wooden doors between rooms
- Cable and satellite TV system
- Videos intercom
- steel door
- Wi-Fi

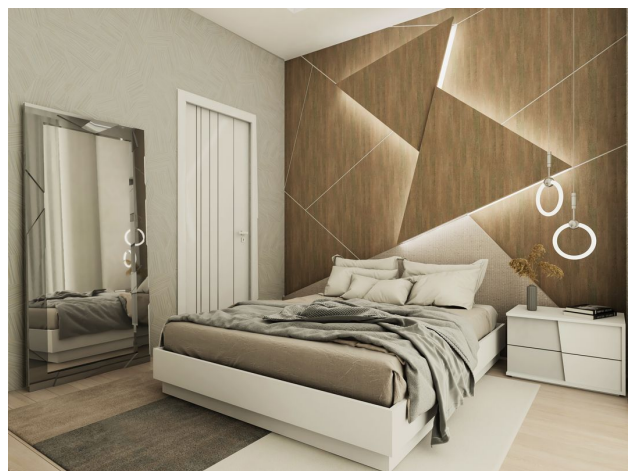
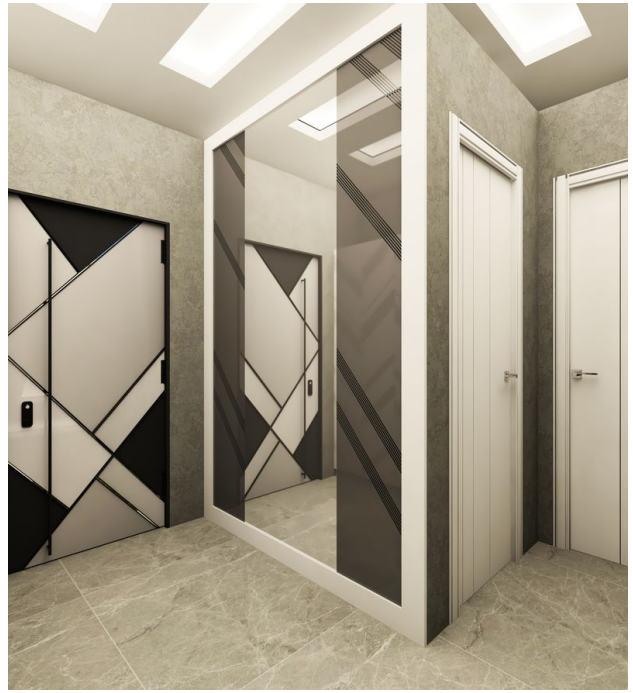
The project will be safe, comfortable, high quality, modern design, and lots of social entertainment!

Updated 19.04.2024

Photo gallery

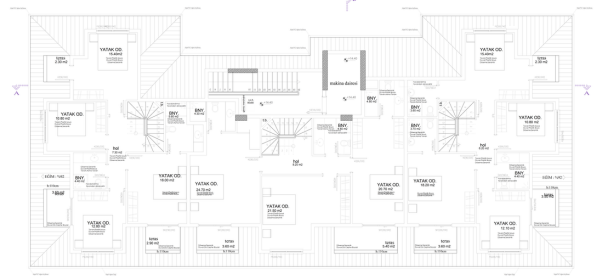




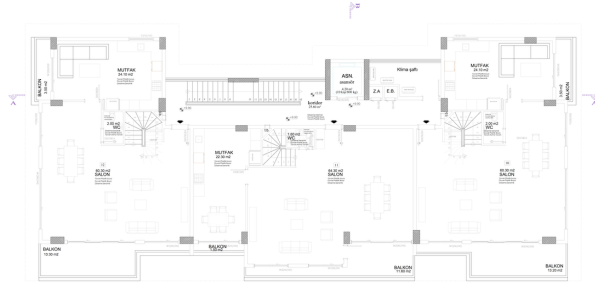




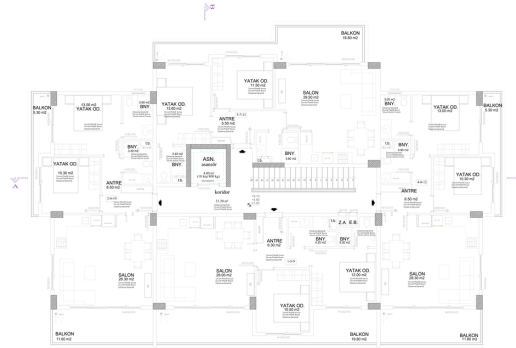
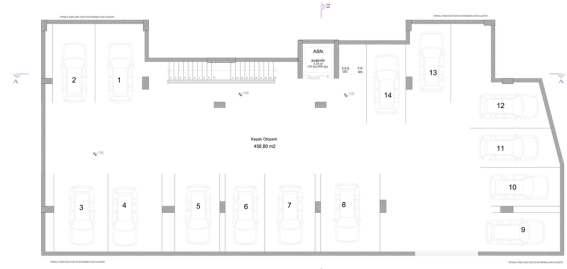
NORMAL KAT PLANI (0.00,+3.30,+6.60KOTU) ÖLÇEK : 1 / 50



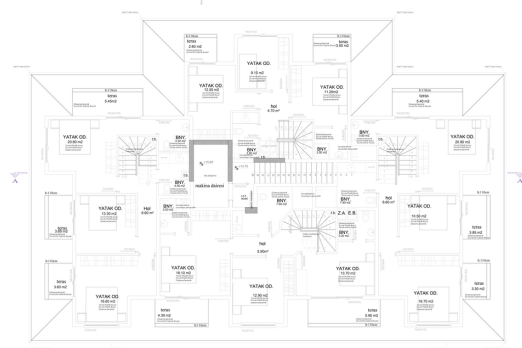
ÇATI ARASI PLANI (+13.20 KOTU) ÖLÇEK : 1 / 50



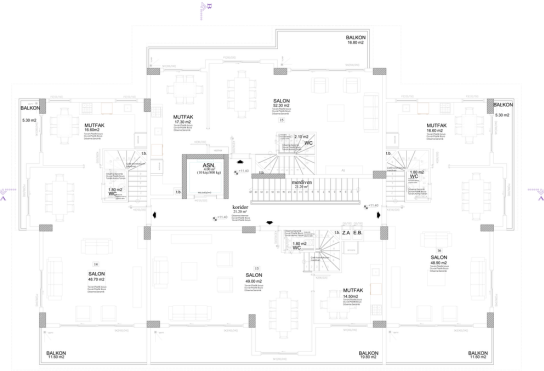
3.KAT PLANI (+9.90 KOTU) ÖLÇEK : 1 / 50



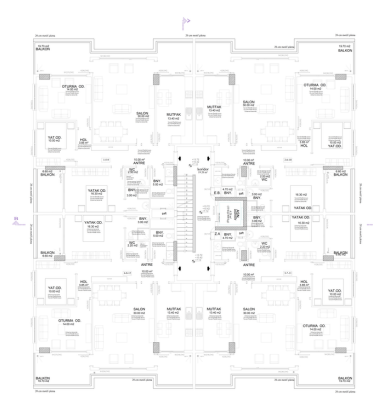
NORMAL KAT PLANI (+1.50,+4.80, +8.10 KOTU) ÖLÇEK : 1 / 50



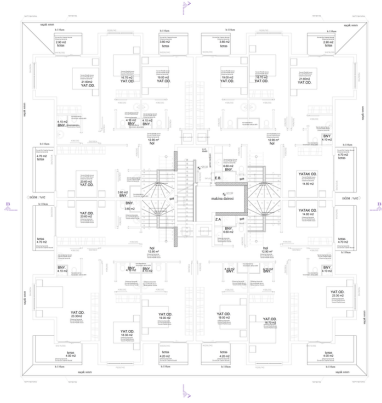
ÇATI ARASI PLANI (+14.70 KOTU) ÖLÇEK : 1 / 50



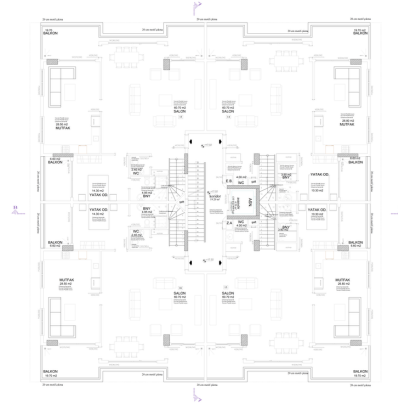
3.KAT PLANI (+11.40 KOTU) ÖLÇEK : 1 / 50



NORMAL KAT PLANI (+7.12,+10.42,+13.72KOTU) ÖLÇEK : 1 / 50



ÇATI ARASI PLANI (+20.32 KOTU) ÖLÇEK: 1/50



4.KAT PLANI (+17.02 KOTU) ÖLÇEK: 1/50

