


Elite apartments in a new residential complex from the developer, Mahmutlar (001481)



108 250 € - 239 500 €

 Floor area 52 m² - 180 m²

 Number of rooms 1 bedroom
2 bedrooms
3 bedrooms
2+1 penthouse
3+1 penthouse

 Furnitures Partly

 To the beach: **400 m**

 Location: **Turkey, Alanya, Mahmutlar**

 To the airport: **28 km**

 To the city centre: **10 km**

Options

- ✓ View of the city
- ✓ Panoramic view
- ✓ White goods
- ✓ Furniture
- ✓ Balcony/ Terrace
- ✓ Swimming pool
- ✓ Private territory
- ✓ Outdoor parking
- ✓ 0% installment
- ✓ Garden
- ✓ Elevator
- ✓ Playground
- ✓ Generator

Description

The new project is in the Mahmutlar area. On a plot of 10,463 m², there are 4 blocks designed for 206 apartments. Each apartment has two balconies. A well-maintained green garden and outdoor recreation areas, a beautiful view from the balcony that you can't get enough of, and

much more await you in this project! The western and eastern sections of our project are green areas. These areas will not be fenced off.

Summer never ends here!

Thanks to the wide pools and rich landscape, you can feel like on vacation without even leaving your home.

Welcome home!

This is not just a project. Your house. When planning this new complex, we wanted to create a comfortable and safe living environment for you. We have created the perfect living space for you with unique sea and beach views, proximity to the city center, and contemporary design interiors.

In the center of life (Location):

Because of its location in Alanya/Mahmutlar, ie. in the heart of Antalya - popular leisure and living center and a rapidly developing investment region, the project will provide you with the conveniences to easily reach every corner of the city. The project is located 10 km from Alanya and only 400 meters from the sea and the beach.

Everything is here!

What if everything you dream of was in your apartment complex? Outdoor and indoor pools, vitamin bar, gym, sauna, Turkish bath, steam rooms, jacuzzi, massage rooms, parking lot, basketball court, playground, water park, playgrounds, and much more. All you need to do in this complex is to live the way you want!

Infrastructure:

- Gym
- Turkish sauna
- SPA: Sauna, Steam room, Jacuzzi
- massage room
- Indoor pool
- Swimming pool
- Children's swimming pool
- Outdoor and indoor playgrounds

- Gazebos for relaxation
- Barbecue areas
- vitamin bar
- Wireless Internet (Wi-Fi)
- Satellite TV
- Generator
- Doorman / Gardener
- The central water treatment system
- parking
- 24/7 security and video surveillance system

Start your day energetically and in good shape.

Every day you will swim in the indoor or outdoor pool, wake up in the morning, you can go down to the gym and start a new day in a wonderful mood.

Comfortable life!

Returning home in the evening, you can relieve daytime fatigue with the help of a sauna or a Turkish bath, and thanks to a relaxing massage, you can get ready for sleep. Every moment of life in the complex will be unique.

We've raised the bar!

Situated among the best investment projects in the region, this complex has architectural details that, thanks to the choice of luxury materials, will make even its worthy neighbors jealous.

Characteristics of the apartments:

- Aluminum and glass railings
- aluminum windows
- Sliding windows with thermal protection
- Sliding balcony doors
- Suspended ceilings with spot and LED lighting
- MDF kitchen furniture
- Granite and marble kitchen countertops
- Walls above black glass countertops

- Shower cabin first quality
- MDF bathroom furniture
- Suspended ceiling
- Wardrobe
- Metal door with modern design
- MDF interior doors
- Floor covering - tiles

You will be happy here!

Peacefully falling asleep and waking up in a house surrounded by greenery, where you feel safe, will make your life unique.

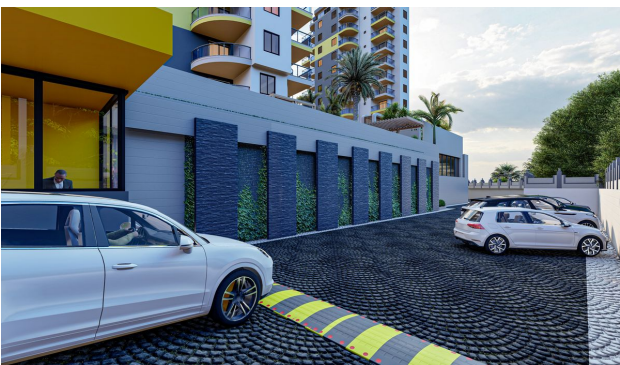
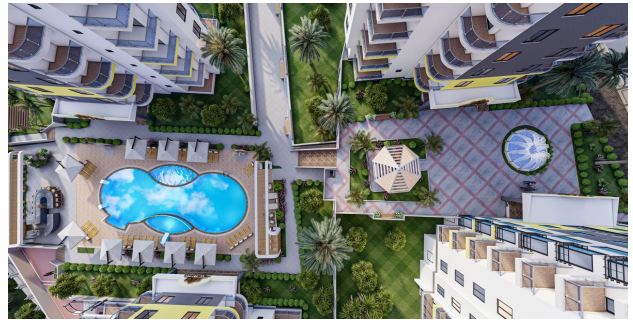
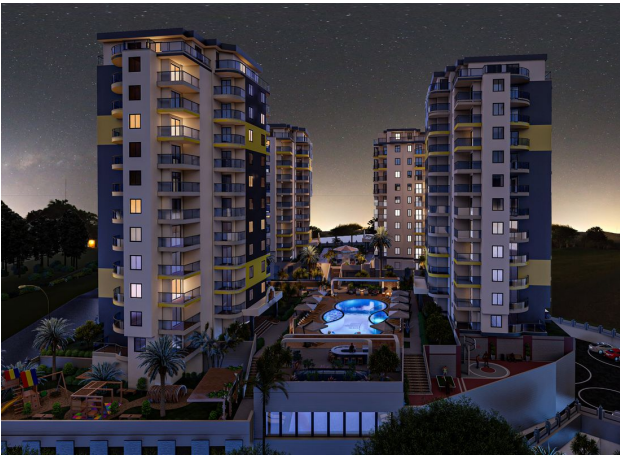
Completion of construction - end of June 2022.

Updated 12.03.2025

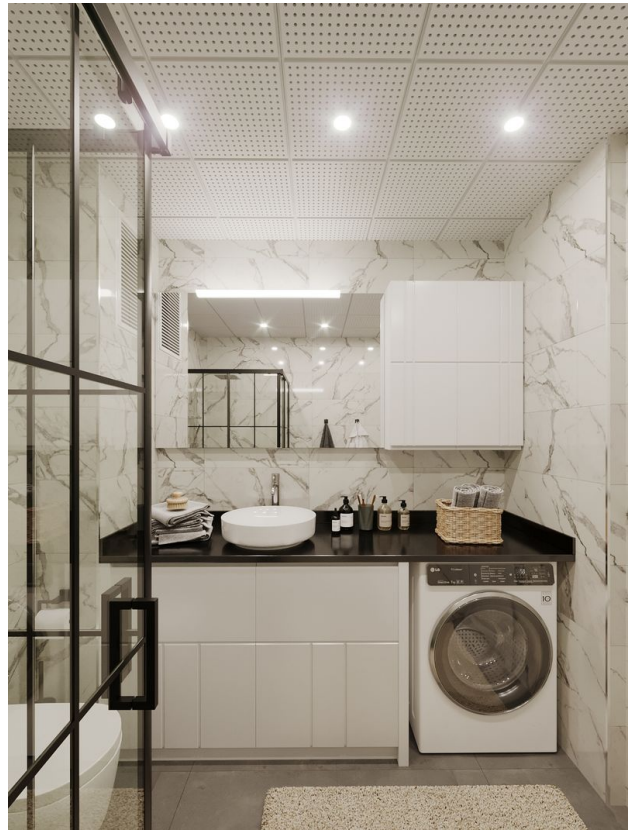
Photo gallery

























E BLOCK BASEMENT FLOOR PLAN 2



D BLOK ZEMIN KAT



D BLOK 1-8 KAT



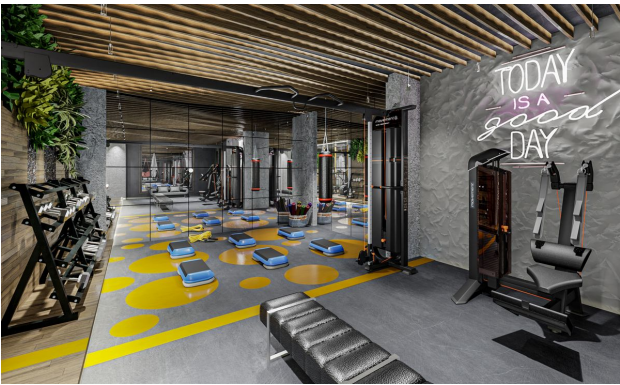
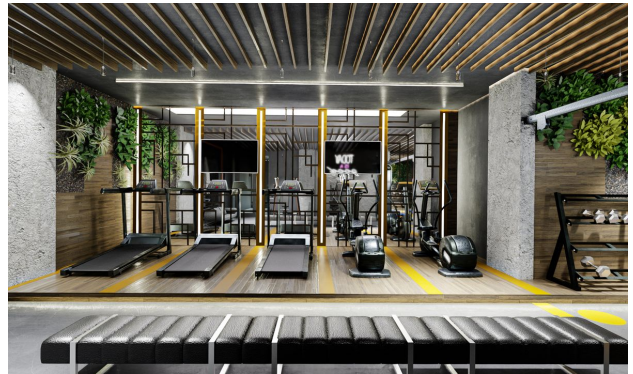
C BLOCK GROUND FLOOR PLAN (NORMAL KAT)
SCALE 1/50



C BLOCK FLOOR PLAN (NORMAL KAT)
SCALE 1/50



B BLOCK BASEMENT FLOOR PLAN 1







Scan the QR code to open the original page