






New residential complex from the developer in the Cikcilli area (00306)



440 000 € - 745 000 €

-  Floor area **170 m² - 351 m²**
-  Number of rooms **3 bedrooms**
4 bedrooms
6 bedrooms
-  Furnitures **Partly**
-  To the beach: **2000 m**
-  Location: **Turkey, Alanya, Cikcilli**

 To the airport: 32 km

 To the city
centre: km

Options

- ✓ Sea view
- ✓ View of the city
- ✓ Panoramic view
- ✓ Balcony/ Terrace
- ✓ Swimming pool
- ✓ Private territory
- ✓ Second beach line
- ✓ Outdoor parking
- ✓ 0% installment
- ✓ Elevator
- ✓ Playground
- ✓ Generator

Description

We present a new residential complex from the developer in the Cikcilli area, Alanya.

The project comprises 4 blocks, and 72 apartments in an area of 7,613 m². The project includes ordinary apartments 3+1, 4+1, and duplexes 6+1.

Characteristics of the apartments and social infrastructure:

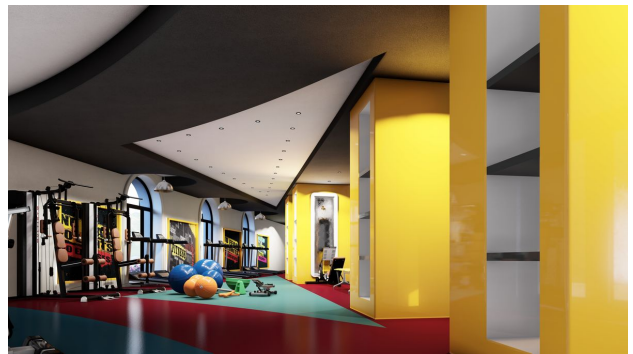
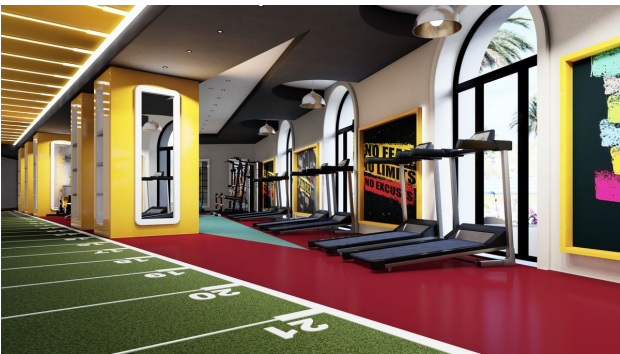
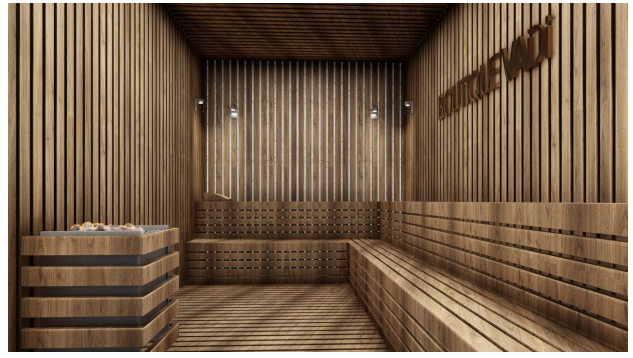
- Covered parking for each apartment
- Guest parking
- Electric vehicle charging station

- Warm floor
- Smart home system
- Open pool
- Indoor pool
- Hamam
- Turkish hammam
- Sauna
- Gym
- Fitness Centre
- cinema hall
- Children playground
- Aluminum joinery
- aluminum frames
- Controlled blinds
- Blinds
- Video surveillance system 7/24
- Camera system 7/24
- Generator
- Playground
- children's park
- Tennis court
- walking path
- doorman
- Security

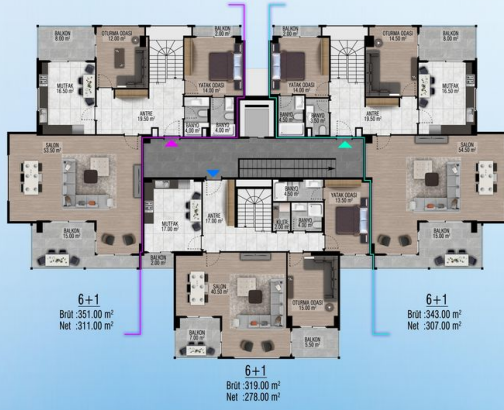
Updated 12.11.2024

Photo gallery

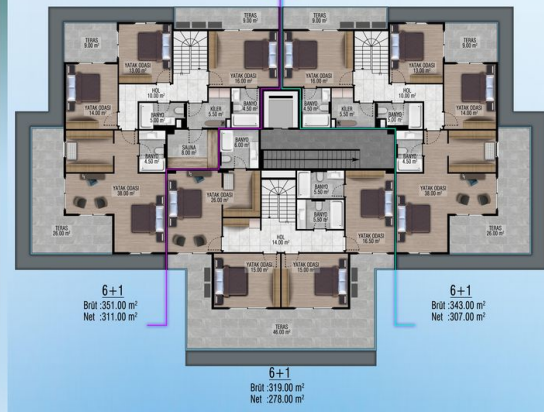




5. KAT PLANI



ÇATI KATI PLANI



NORMAL KAT PLANI

