






New project of a residential complex in the popular area of ☒☒Mahmutlar, Alanya (00346)



129 000 € - 250 000 €

🏠 Floor area **52 m² - 150 m²**

🏠 Number of rooms
1 bedroom
2 bedrooms
3 bedrooms

 Furnitures	Partly
 To the beach:	400 m
 Location:	Turkey, Alanya, Mahmutlar
 To the airport:	26 km
 To the city centre:	15 km

Options

- ✓ View of the city
- ✓ Panoramic view
- ✓ Balcony/ Terrace
- ✓ Swimming pool
- ✓ Private territory
- ✓ Outdoor parking
- ✓ 0% installment
- ✓ Elevator
- ✓ Playground
- ✓ Generator

Description

The new project of a residential complex in the popular area of Mahmutlar, Alanya

Location:

Distance to the sea - 400 meters, shops 200 meters.

Alanya -15 km, Gazipasa -25 km, Antalya -140 km.

Apartment type:

- There are 30 apartments on the project
- 26 apartments 1+1 (BRT: 56.5 M2 N 51.5 M2)
- 2 duplexes 2+1 (BRT:112M2)
- 2 duplexes 3+1 (BRT: 150 M2 N 153 M2)

Complex infrastructure

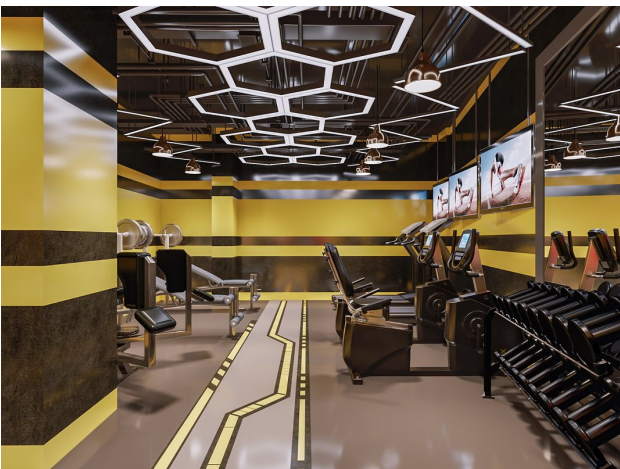
- Open pool
- Sauna
- Roman steam room
- Gym
- Children's playroom
- Children's playground
- Generator
- Relaxation area and barbecue
- Parking

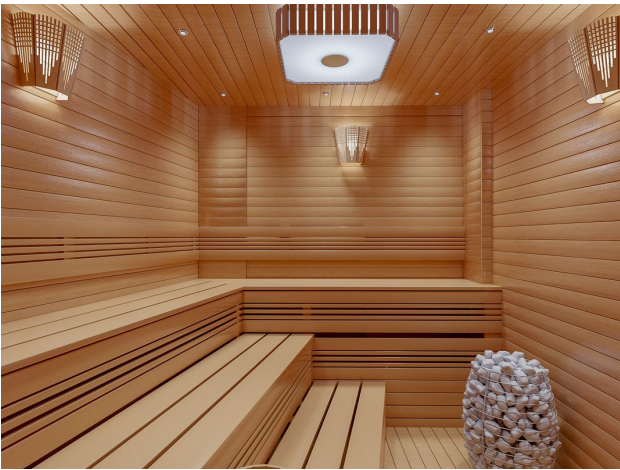
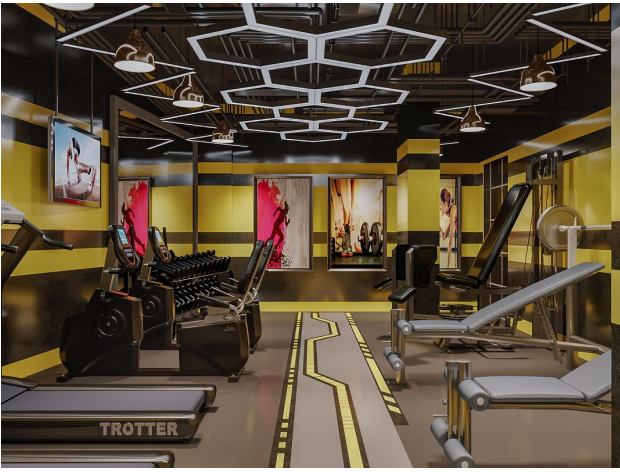
Start of construction in January 2022

Commissioning will be completed in December 2022

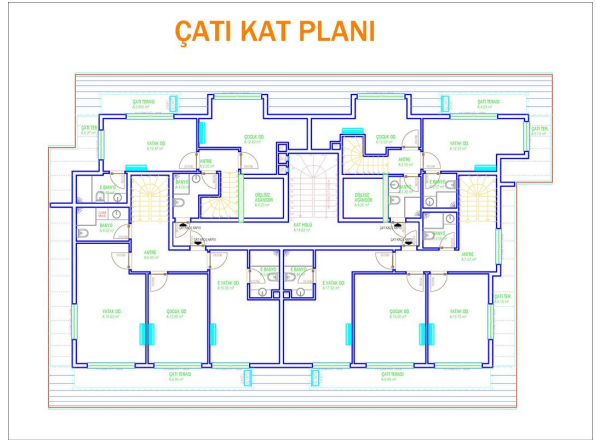
Updated 07.03.2025

Photo gallery

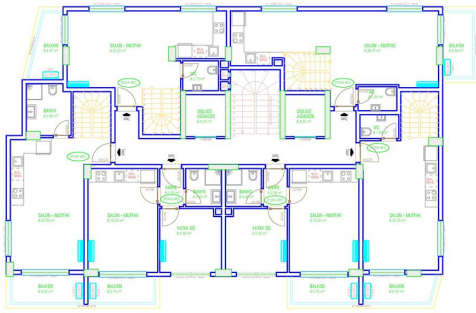




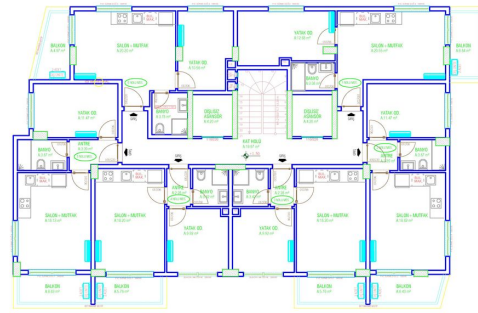




DUBLEKS KAT PLANI



NORMAL KAT PLANI



Scan the QR code to open the original page