

Investment project! Apartments from the developer under construction in Alanya, Palayar area (002398)








112 000 € - 215 000 €

🏠 Floor area 54 m² - 142 m²

**🏠 Number of
rooms**

- 1 bedroom**
- 2 bedrooms**
- 2+1 penthouse**
- 3+1 penthouse**

 Furnitures	Partly
 To the beach:	1800 m
 Location:	Turkey, Alanya, Паяллар
 To the airport:	60 km
 To the city centre:	km

Options

- ✓ Sea view
- ✓ Panoramic view
- ✓ Balcony/ Terrace
- ✓ Swimming pool
- ✓ Private territory
- ✓ Outdoor parking
- ✓ 0% installment
- ✓ Elevator
- ✓ Playground
- ✓ Generator

Description

A new comfort-class project in the promising area of Payallar.

The complex is being built on a rectangular plot of land with an area of 4302 m². Due to the terrain, the infrastructure of the project will be located between two residential 9-story blocks, with a separate pool and recreation area for each of them.

The infrastructure of the complex includes:

- outdoor pools
- indoor pool
- cafe and bar
- sauna, Turkish bath
- children's playroom
- playground
- gym
- wireless Internet Wi-Fi, satellite TV
- 24/7 security camera system
- autonomous electric generator

The distance from the complex to the beaches is 1.8 km. There is a transfer to the beach, so the distance to the sea will not be any inconvenience. Public transport runs along the waterfront to the center and other areas of Alanya, the neighboring town of Avsallar.

The construction of the complex will begin in September 2022 and be completed in December 2023.

Until the end of construction, installment payments are available without %, with an initial payment of 30% and a fixed cost of apartments. Flexible repayment schedule.

Linear single-level:

- With one bedroom, a living room combined with a kitchen, a balcony, and a bathroom - layout 1 + 1. Areas: 54, 55, 56 and 62 m².
- With two bedrooms, a living room combined with a kitchen, balconies, and a bathroom - layout 1 + 1. Areas: 72 and 74 m².

Duplex penthouses:

- With two bedrooms, layout 2+1. Areas: 99, 101, 112, 116, 100 m².
- With three bedrooms, layout 3 + 1. Areas: 142, 150, 163, 172 m².
- Garden apartments 1 + 1 with access to the courtyard are provided in limited quantities.

The price of the apartment includes a high-quality finish, a kitchen set, equipped bathrooms, interior and exterior doors, a lighting system, and installed air conditioners.

The housing stock of the complex is 104 apartments.

Payallar is a cozy low-rise town in the west of Alanya, just 10 km from its historical center. This location opens up immediate development prospects for this town.

At the moment, a few modern residences have already been built in the complex's vicinity. And it is this part of Payallar, occupied by farm greenhouses, that in the coming years will be built up only with luxurious and beautiful residences.

It will be an unknown part of the town, prestigious, and equipped with a new infrastructure. While the built-up central part of Payallar is mostly outdated housing stock.

Since there are very few free land plots in other areas of Alanya, Payallar is now being actively developed by developers. Hurry to invest in a new project at an early stage of construction. Real estate prices in Payallar will rise. And today, it is one of the most inexpensive premium-class apartments in Alanya.

All basic social infrastructure is near the complex:

- 1.4 km to elementary school.
- 570 m from public high school.
- 670 m to Mehmet Akif Ersoy High School.
- 400 m from the Lyceum.
- 670 m from Payallar Aile Saglik Merkezi Hospital (Family Health Centre).
- 2.2 km to the clinic.
- 1.4 km to the dental clinic.
- Within walking distance are chain supermarkets, grocery stores, shops of different goods, gas stations, ATMs, and pharmacies.
- 1.6 km to the main street, 2 km from the municipality of Payallar.
- A large coniferous forest is located 1.2 km from the complex.
-

On the first coastline in Payallar, there are mainly large hotels; the tourist infrastructure is well developed here.

Updated 22.10.2024

Photo gallery





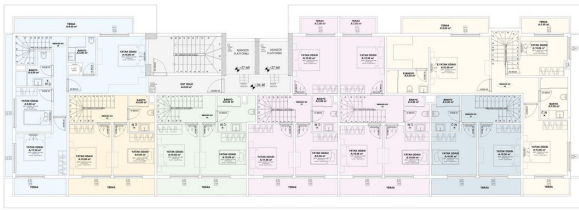








B BLOK ZEMİN KAT PLANI



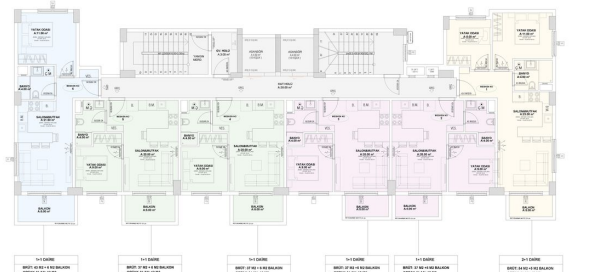
B BLOK 6. KAT PLANI



B BLOK 7. KAT PLANI



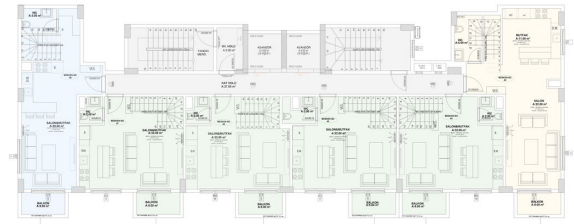
B BLOK TİP KAT PLANI



A BLOK ZEMİN KAT PLANI



A BLOK ÇATI KATI PLANI



<p>011 DİREKTÖR OFİSİ</p> <p>012 DİREKTÖR OFİSİ</p> <p>013 DİREKTÖR OFİSİ</p> <p>014 DİREKTÖR OFİSİ</p> <p>015 DİREKTÖR OFİSİ</p> <p>016 DİREKTÖR OFİSİ</p>	<p>017 DİREKTÖR OFİSİ</p> <p>018 DİREKTÖR OFİSİ</p> <p>019 DİREKTÖR OFİSİ</p> <p>020 DİREKTÖR OFİSİ</p> <p>021 DİREKTÖR OFİSİ</p> <p>022 DİREKTÖR OFİSİ</p>	<p>023 DİREKTÖR OFİSİ</p> <p>024 DİREKTÖR OFİSİ</p> <p>025 DİREKTÖR OFİSİ</p> <p>026 DİREKTÖR OFİSİ</p> <p>027 DİREKTÖR OFİSİ</p> <p>028 DİREKTÖR OFİSİ</p>	<p>029 DİREKTÖR OFİSİ</p> <p>030 DİREKTÖR OFİSİ</p> <p>031 DİREKTÖR OFİSİ</p> <p>032 DİREKTÖR OFİSİ</p> <p>033 DİREKTÖR OFİSİ</p> <p>034 DİREKTÖR OFİSİ</p>	<p>035 DİREKTÖR OFİSİ</p> <p>036 DİREKTÖR OFİSİ</p> <p>037 DİREKTÖR OFİSİ</p> <p>038 DİREKTÖR OFİSİ</p> <p>039 DİREKTÖR OFİSİ</p> <p>040 DİREKTÖR OFİSİ</p>
---	---	---	---	---

A BLOK 7.KAT PLANI



<p>041 DİREKTÖR OFİSİ</p> <p>042 DİREKTÖR OFİSİ</p> <p>043 DİREKTÖR OFİSİ</p> <p>044 DİREKTÖR OFİSİ</p> <p>045 DİREKTÖR OFİSİ</p> <p>046 DİREKTÖR OFİSİ</p>	<p>047 DİREKTÖR OFİSİ</p> <p>048 DİREKTÖR OFİSİ</p> <p>049 DİREKTÖR OFİSİ</p> <p>050 DİREKTÖR OFİSİ</p> <p>051 DİREKTÖR OFİSİ</p> <p>052 DİREKTÖR OFİSİ</p>	<p>053 DİREKTÖR OFİSİ</p> <p>054 DİREKTÖR OFİSİ</p> <p>055 DİREKTÖR OFİSİ</p> <p>056 DİREKTÖR OFİSİ</p> <p>057 DİREKTÖR OFİSİ</p> <p>058 DİREKTÖR OFİSİ</p>	<p>059 DİREKTÖR OFİSİ</p> <p>060 DİREKTÖR OFİSİ</p> <p>061 DİREKTÖR OFİSİ</p> <p>062 DİREKTÖR OFİSİ</p> <p>063 DİREKTÖR OFİSİ</p> <p>064 DİREKTÖR OFİSİ</p>	<p>065 DİREKTÖR OFİSİ</p> <p>066 DİREKTÖR OFİSİ</p> <p>067 DİREKTÖR OFİSİ</p> <p>068 DİREKTÖR OFİSİ</p> <p>069 DİREKTÖR OFİSİ</p> <p>070 DİREKTÖR OFİSİ</p>
---	---	---	---	---

A BLOK 1.KAT PLANI