

# Apartments in a new residential complex from the developer in Gazipasa, Alanya (00186)



**85 000 € - 280 000 €**


**🏠 Floor area**      **64 m<sup>2</sup> - 170 m<sup>2</sup>**


**🏠 Number of rooms**  
**1 bedroom**  
**2 bedrooms**  
**3 bedrooms**

**🪑 Furnitures**      **Partly**

**🌊 To the beach:**      **2000 m**

 Location: **Turkey, Alanya, Gazipasha**

 To the airport: **5 km**

 To the city  
centre: **5 km**

## Options

- ✓ Panoramic view
- ✓ Balcony/ Terrace
- ✓ Swimming pool
- ✓ Private territory
- ✓ Outdoor parking
- ✓ 0% installment
- ✓ Security
- ✓ For citizenship
- ✓ Elevator
- ✓ Generator

## Description

Developed infrastructure to meet all your needs, as well as well-established educational institutions, in proximity. The complex is located 4 km from the airport and 2 km from the beach. It is also located 500 m from the city center.

Through our project, we aim to improve the quality of your life, as well as that of your guests. A swimming pool, playgrounds and a barbecue area will make your vacation complete. Our brand is a candidate of choice for those who do not want to sacrifice quality in favor of spacious rooms and materials used in construction.

The design of the outdoor pool includes a large terrace and sunbathing area. Our outdoor pool will appeal to both adults and children.

COMPLEX, comprising 4 buildings and 53 apartments, built on an area of 4114 m<sup>2</sup> (1342 plot 1, 1343 plot 3)

### **1ST FLOOR**

- 1+1 = 48.00 M<sup>2</sup>
- 1+1 = 60.00 M<sup>2</sup>
- 1+1 = 60.00 M<sup>2</sup>
- 1+1 = 48.00 M<sup>2</sup>

### **2 FLOOR**

- 3+1 = 133.00 M<sup>2</sup>
- 3+1 = 133.00 M<sup>2</sup>

### **3 RD FLOOR**

- 3+1 = 133.00 M<sup>2</sup>
- 3+1 = 133.00 M<sup>2</sup>

### **4TH FLOOR**

- 3+1 = 133.00 M<sup>2</sup>
- 3+1 = 133.00 M<sup>2</sup>

### **5TH FLOOR**

- 2+1 = 82.00 M<sup>2</sup>
- 2+1 = 82.00 M<sup>2</sup>

### **6 FLOOR**

- 2+1 = 101.00 M<sup>2</sup>
- 3+1 = 170.00 M<sup>2</sup>
- 2+1 = 101.00 M<sup>2</sup>

- 3+1 =170.00 M2

## **BODY A2**

### **1ST FLOOR**

- 2+1 =64.00 M2
- 2+1 =64.00 M2

### **2 FLOOR**

- 2+1 =82.00 M2
- 2+1 =82.00 M2

### **3RD FLOOR**

- 2+1 =82.00 M2
- 2+1 =82.00 M2

### **4TH FLOOR**

- 2+1 =82.00 M2
- 2+1 =82.00 M2

### **5TH FLOOR**

- 1+1 =57.00 M2
- 3+1 =125.00 M2
- 3+1 =125.00 M2
- 1+1 =57.00 M2

**INFO UPDATED 08/07/2024**

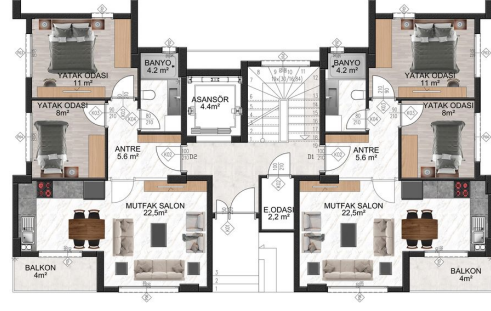
## **Photo gallery**





DAİRE 2  
2+1  
64 m<sup>2</sup>

DAİRE 1  
2+1  
64 m<sup>2</sup>



ZEMİN KAT PLANI

DAİRE 11  
3+1 DUBLEX  
29 m<sup>2</sup>+96 m<sup>2</sup> = 125 m<sup>2</sup>

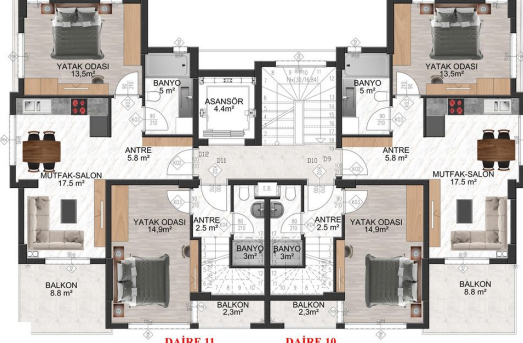
DAİRE 10  
3+1 DUBLEX  
29 m<sup>2</sup>+96 m<sup>2</sup> = 125 m<sup>2</sup>



ÇATI KAT PLANI

DAİRE 12  
1+1  
57 m<sup>2</sup>

DAİRE 9  
2+1  
57 m<sup>2</sup>



TUNCELER

DAİRE 11

DAİRE 10

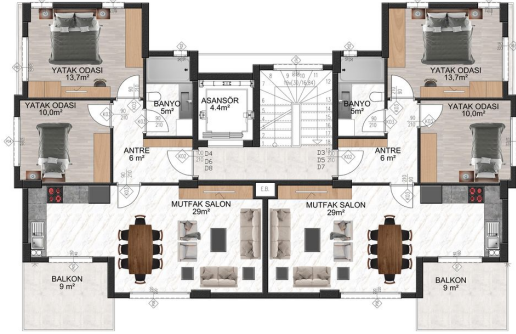
4. KAT PLANI

3+1 DUBLEX 29 m<sup>2</sup>+96 m<sup>2</sup> = 125 m<sup>2</sup>

3+1 DUBLEX 29 m<sup>2</sup>+96 m<sup>2</sup> = 125 m<sup>2</sup>

DAİRE 4-6-8  
2+1  
82 m<sup>2</sup>

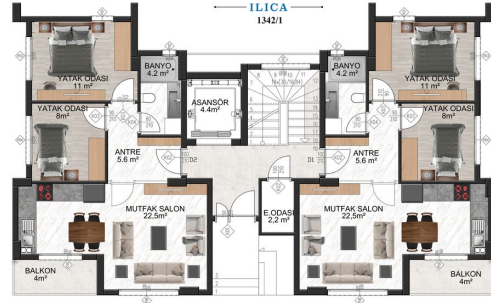
DAİRE 3-5-7  
2+1  
82 m<sup>2</sup>



1.2.3. KAT PLANI

DAİRE 2  
2+1  
64 m<sup>2</sup>

DAİRE 1  
2+1  
64 m<sup>2</sup>



TUNCELER

ZEMİN KAT PLANI

DAİRE 11  
3+1 DUBLEX  
29 m<sup>2</sup>+96 m<sup>2</sup> = 125 m<sup>2</sup>

DAİRE 10  
3+1 DUBLEX  
29 m<sup>2</sup>+96 m<sup>2</sup> = 125 m<sup>2</sup>

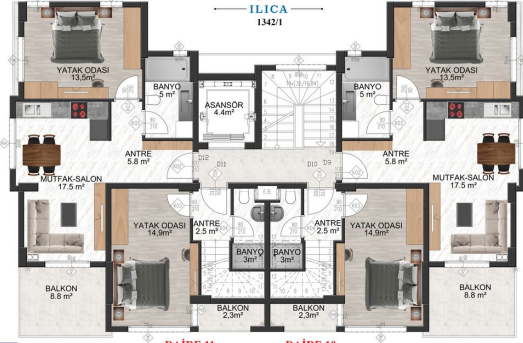


TUNCELER

ÇATI KAT PLANI

DAİRE 12  
1+1  
57 m<sup>2</sup>

DAİRE 9  
2+1  
57 m<sup>2</sup>



TUNCELER

4. KAT PLANI

DAİRE 11

DAİRE 10

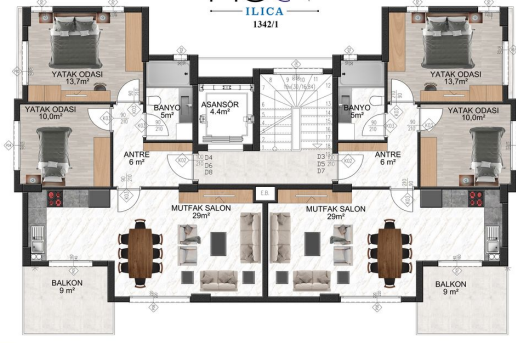
3+1 DUBLEX 29 m<sup>2</sup>+96 m<sup>2</sup> = 125 m<sup>2</sup>

3+1 DUBLEX 29 m<sup>2</sup>+96 m<sup>2</sup> = 125 m<sup>2</sup>

DAIRE 4-6-8  
2+1  
82 m<sup>2</sup>

nest  
ILICA  
1342/1

DAIRE 3-5-7  
2+1  
82 m<sup>2</sup>



TUNCERLER

1.2.3. KAT PLANI