

Elegant apartments with panoramic sea views (005447)



335 000 € - 745 000 €

-  Floor area **50 m² - 114 m²**
-  Number of rooms **1 bedroom**
2+1 penthouse
-  Furnitures **Partly**
-  To the beach: **350 m**
-  Location: **Turkey, Alanya, Kleopatra**
-  To the airport: **43 km**

 To the city
centre:

1 km

Options

- ✓ Sea view
- ✓ Mountain view
- ✓ White goods
- ✓ Balcony/ Terrace
- ✓ Swimming pool
- ✓ Private territory
- ✓ Security
- ✓ Playground
- ✓ Generator

Description

Spacious apartments **with sea views** in the center of Alanya. Thanks to its elevated position, the area offers panoramic views of the city, including the famous Cleopatra Beach, the Mediterranean Sea, the Red Tower, Alanya Harbor and the historical armory.

Apartments in Alanya are 350 meters from the famous Cleopatra Beach and 500 meters from the nearest supermarket. You can also find other shopping malls, trendy cafes, global restaurants, daily boat tours, boutiques and beach clubs nearby. The apartments are also 43 km from Gazipasa Airport and 124 km from Antalya Airport.

In addition to the magnificent views, this project will attract the attention of investors and property buyers with its elegant design and luxurious social amenities in the complex, providing owners with high rental income.

Built on a plot of land with an area of 2,598 m², the residential complex consists of 5 blocks of 35 apartments.

Infrastructure:

- 24 hour security,
- administration,
- dry cleaning,
- caretaker/gardener,
- VIP room,
- outdoor heated swimming pool,
- SPA center with sauna,
- steam room,
- electric generator and much more.

Apartment types:

- The **1+1 apartments** range from 51 m2 to 72 m2 and include a living room, open plan kitchen, bedroom, bathroom and balcony.
- The 75m2 **2+1 apartments** include a living room, open plan kitchen, two bedrooms, a bathroom and a balcony.
- The **2+1 penthouses** range from 95 m2 to 138 m2 and include a living room, an open plan kitchen, two bedrooms, three bathrooms, a balcony and a terrace.
- The 110 m2 **3+1 penthouses** include a living room, open plan kitchen, three bedrooms, two bathrooms, a balcony and a terrace.

The apartments are stylishly finished and equipped with high quality materials such as:

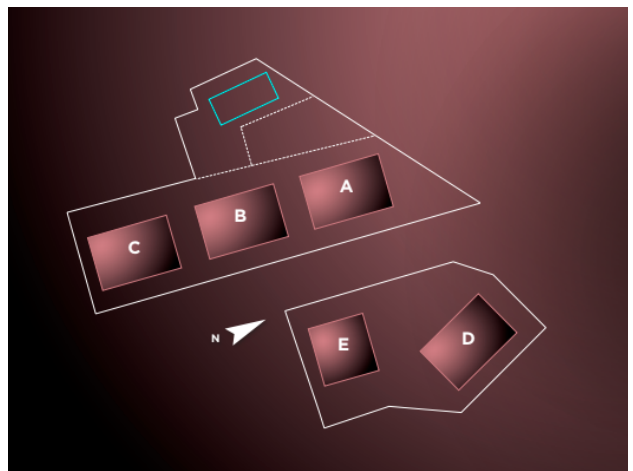
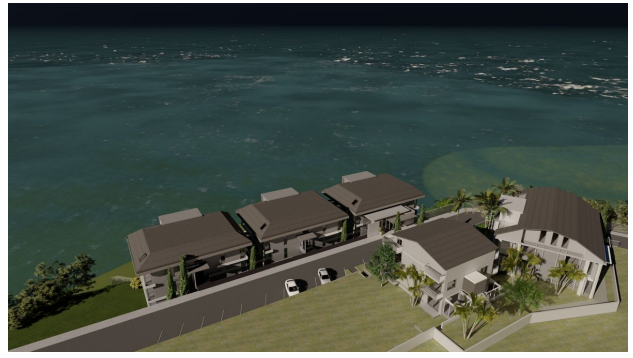
- steel security doors,
- double glazed windows,
- ceiling air conditioners,
- specially designed Ferrari curtains,
- built-in lighting,
- ceramic tile floors,
- built-in kitchens with granite countertops,
- fully tiled bathrooms with furniture,
- shower cabins with safety glass,
- sliding doors to balconies, etc.

Construction period: May 2022 - September 2023.

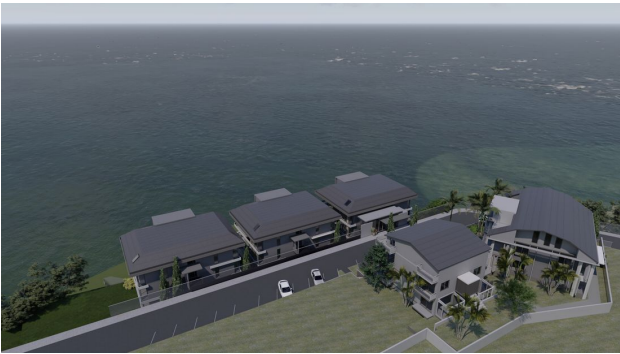
Information updated: 05.07.2024

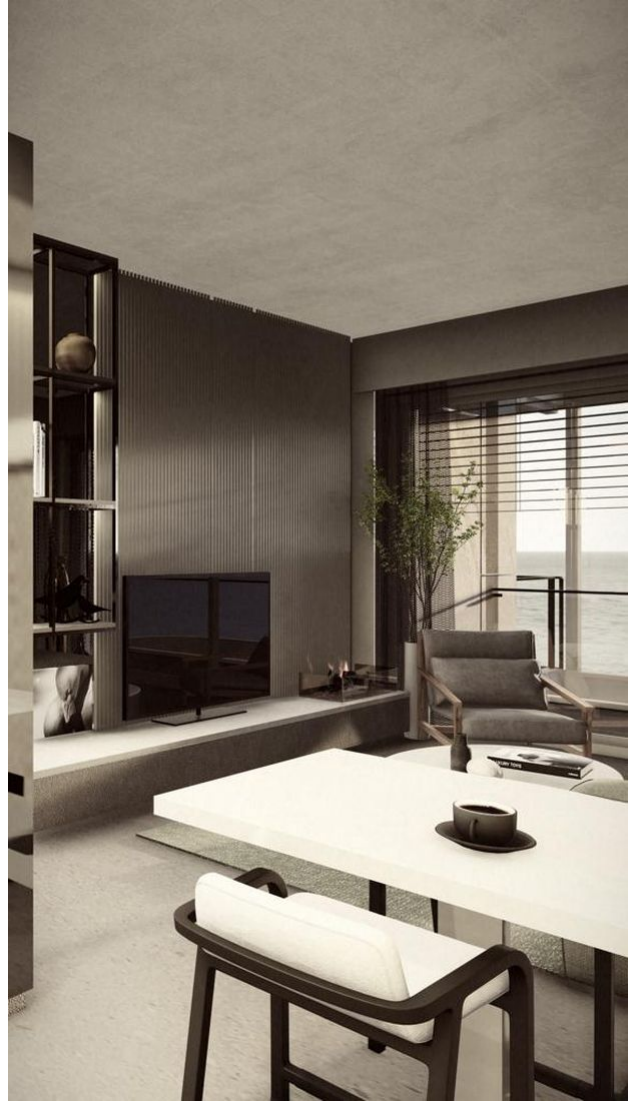
Photo gallery







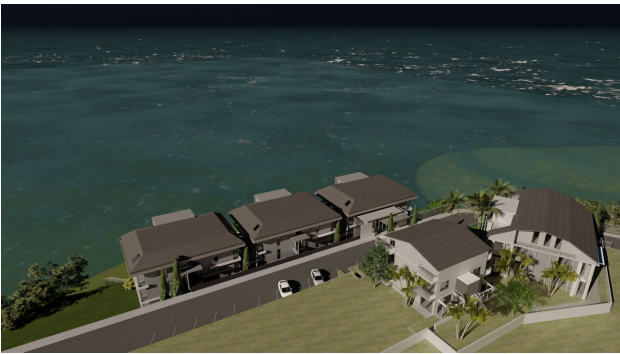














Scan the QR code to open the original page