

Apartments in a new residential complex in one of the picturesque areas of Alanya - Gazipasa (01714)




250 000 €

🏠 Floor area **59 m² - 200 m²**


🏠 Number of rooms **1 bedroom**
2 bedrooms
2+1 penthouse
4+1 penthouse

🛋️ Furnitures **Partly**

 To the beach: **2000 m**

 Location: **Turkey, Alanya, Gazipasha**

 To the airport: **4 km**

 To the city centre: **40 km**

Options

- ✓ Balcony/ Terrace
- ✓ Swimming pool
- ✓ Private territory
- ✓ Outdoor parking
- ✓ 0% installment
- ✓ Security
- ✓ Elevator
- ✓ Playground
- ✓ Generator

Description

A new luxury project offers you an attractive investment opportunity.

The residential complex will be located in one of the picturesque areas of Alanya - Gazipasa on a plot of land with an area of 3633 m².

The project will consist of 2 blocks of 4 floors and 80 apartments.

- 1+1 (59 m²) - 36 apartments
- 2+1 (90 m²) - 24 apartments
- 2+1 duplex (140m²) - 12 apartments

- 4+1 duplex (180 - 200 m2) - 8 apartments

The entire developed infrastructure of the city (restaurants, markets, markets, shopping centers, pharmacies, parks) is located within walking distance, and the beautiful beaches of Gazipasa are just a 10-minute walk away.

Infrastructure:

- Meeting room
- Fitness
- Cafe Restaurant
- B-B-Q
- Gazebos for relaxation
- parking
- Generator
- Satellite TV
- Video surveillance 7/24
- Complex Manager
- Open pool
- Aquapark
- Lobby/Reception
- Hamam
- Sauna
- Roman steam room
- salt room
- massage room
- Playroom
- Children playground

Features of the apartments:

- steel front door
- Interior doors
- Kitchen furniture with granite countertop
- A complete set of sanitary ware and furniture in the bathrooms
- Floors - ceramic tiles

- Walls - waterproof paint
- Balcony doors and windows
- Primary and secondary lighting

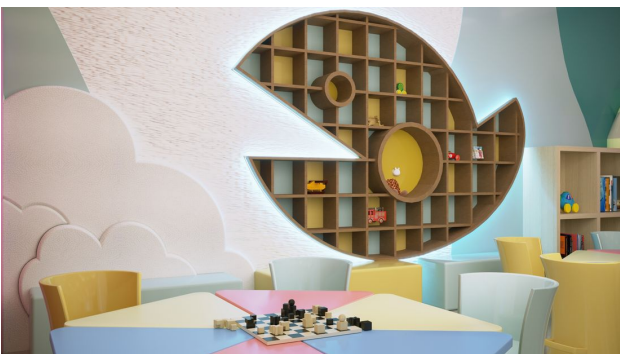
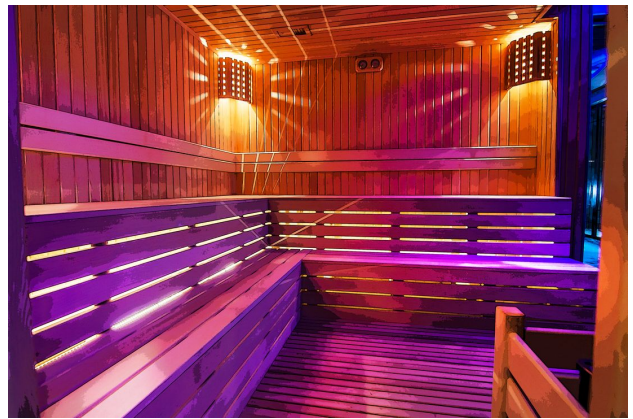
Construction start date: 03.2023

Construction completion date: 12.2024

Information updated: 06.06.2024

Photo gallery







Scan the QR code to open the original page