

New complex of apartments on the 1st line with hotel management (089317)



159 851 € - 320 582 €

-  Floor area: **30 m² - 80 m²**
-  Number of rooms: **Studio**
2 bedrooms
-  Furnitures: **Partly**
-  To the beach: **30 m**
-  Location: **Thailand, Phuket**
-  To the airport: **10 km**

 To the city
centre: km

Options

- ✓ White goods
- ✓ Furniture
- ✓ Balcony/ Terrace
- ✓ Swimming pool
- ✓ Private territory
- ✓ 0% installment

Description

Unique five-star resort complex!

Total area - 99,200 sq.m. 500-meter flower alley at the entrance, 6 swimming pools, 23 boutique shops, restaurants, gym.

450 holiday apartments at your service!

In the apartments: modern design, convenience, different layouts.

A choice of studio apartments, 1 and 2 bedroom apartments - duplex loft style apartments with direct access to the pool.

- Delivery: 4 quarter 2024
- To the sea: 30 m
- Bedrooms: 1 - 2
- Bathrooms: 1 - 2
- Living area: 30 - 80 m²
- **Income: 7-10% per annum**
- Installment: For the period of construction

Studio 30-43 m2 from \$ 166,645

Apartments with 2 bedrooms 67-80 m2 \$ 334,207

Feature: the first line of the beautiful Nai Thon beach. The sandy bay is surrounded by green hills. Next to the National Reserve.

Location:

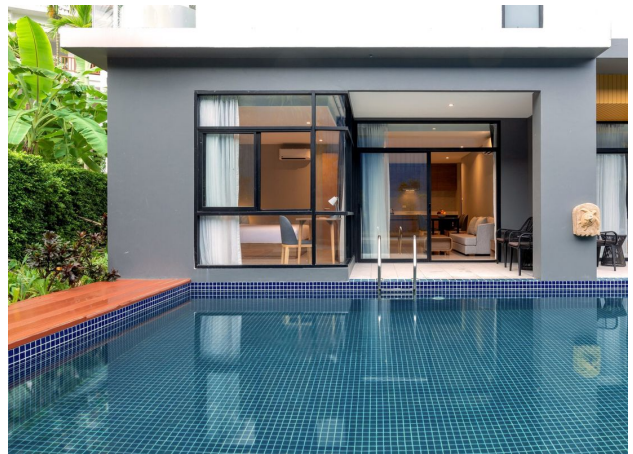
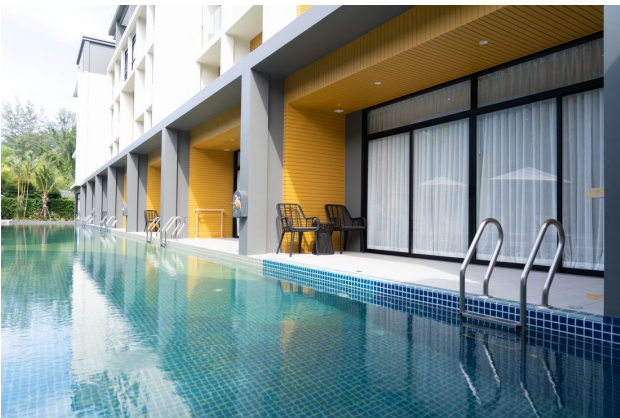
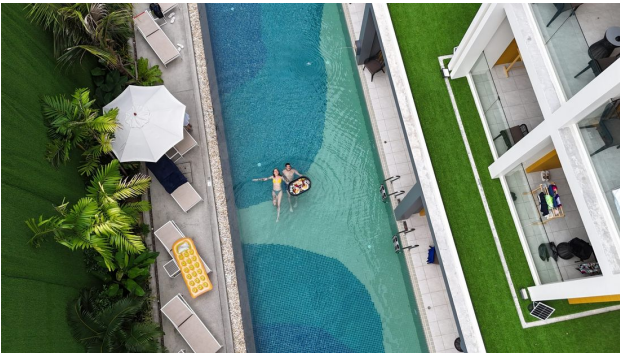
- Airport 10 km
- Patong 30 km
- Shopping center 30 km
- Supermarket 0.3 km
- Restaurants 0.3 km
- Hospital 30 km
- Golf club 10 km
- Yacht club 25 km

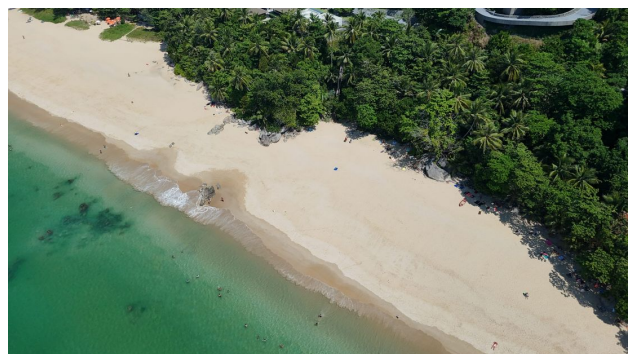
Income: a contract for a **guaranteed income of 7% per annum for 5 years**, or a contract for the division of income 60/40 between the owner and the hotel in favor of the owner.

The price includes: a package of furniture, finishing, plumbing, built-in kitchen, built-in wardrobes, air conditioners.

Information updated: 20.01.2025

Photo gallery













Scan the QR code to open the original page