

Apartments in a modern residential complex on the border of Chiplakly and Oba districts (003221)



500 000 €

🏠 Floor area **50 m² - 126 m²**

🏠 Number of rooms **1 bedroom**
2 bedrooms
3 bedrooms

🛋️ Furnitures **Partly**

 To the beach: **2500 m**

 Location: **Turkey, Alanya, Oba**

 To the airport: **42 km**

 To the city centre: **4 km**

Options

- ✓ Balcony/ Terrace
- ✓ Swimming pool
- ✓ Private territory
- ✓ Outdoor parking
- ✓ Security
- ✓ Elevator
- ✓ Playground
- ✓ Generator

Description

A residential complex in which every future owner will definitely feel comfort, tranquility and happiness.

The project is being built on a site with an area of about 800 m², in an easterly direction, on the border of the Chiplakli and Oba districts.

The residential complex is located 2.5 kilometers from the sea, 1.5 km from the center of Oba, 1.5 km from the public hospital, as well as within walking distance from ATMs, shopping centers, bakeries and shopping markets.

That is close to everything you need for a comfortable stay.

The complex is designed as a compact boutique project with 1 block.

Apartment options:

- 1+1
- 2+1
- 3+1

Infrastructure of the complex:

- playground
- gazebos
- open pool
- gym
- elevator
- parking

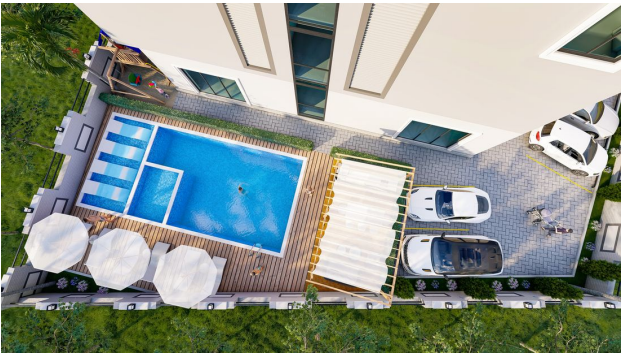
Start of construction: January 2023

Completion date: January 2024

Information updated: 18.07.2024

Photo gallery







Scan the QR code to open the original page