

New modern complex in the picturesque area of Payallar (018462)



115 000 € - 350 000 €

🏠 Floor area **76 m² - 180 m²**

🏠 Number of rooms


- 1 bedroom**
- 2 bedrooms**
- 3+1 penthouse**
- 4+1 penthouse**

🪑 Furnitures **Partly**

🌊 To the beach: **2270 m**

 Location: **Turkey, Alanya, Паяллар**

 To the airport: **38 km**

 To the city
centre: **4 km**

Options

- ✓ Smart house
- ✓ Balcony/ Terrace
- ✓ Swimming pool
- ✓ Private territory
- ✓ Outdoor parking
- ✓ Garden
- ✓ Forest view
- ✓ Elevator
- ✓ Playground
- ✓ Generator

Description

The new residential complex is located on an area of 3800 square meters in Payallar, a beautiful place in Alanya, and consists of 2 blocks, 8 floors and 64 apartments.

The apartments offer views of the forest.

In addition, the construction of a state hospital with 200 beds has begun in the same area.

The Payalar region is a region that has seen significant investment and development in recent years. Also, since it is close to Konakli, it can accommodate all your needs.

The investment that you will make by purchasing an apartment in this project will be an investment that will bring 4 times the income in the near future.

Our project has an extremely modern structure.

Our residence includes the following sections:

A BLOCK

- 2 shopping centers
- 2 duplex apartments 3+1
- 2 duplexes with garden 2+1
- 12 mezzanine apartments 1+1
- 12 mezzanine apartments 2+1

B BLOCK

- 2 duplex apartments 3+1 Garden
- 2 duplex apartments 2+1 overlooking the garden
- 12 mezzanine apartments 2+1
- 12 mezzanine apartments 1+1
- 2 duplexes 2+1 on the roof
- 2 rooftop duplexes 3+1

Smart home system (the ability to remotely control blinds, lights and air conditioning, watch video from cameras around the clock and seven days a week)

Infrastructure of the complex:

- Children's and adult playroom
- Tennis
- Basketball
- Football field
- Playground
- Parking
- SPA services (hammam, sauna, cold steam room, massage)
- A fitness center
- Transfer to the beach

- Pool
- professional garden architecture
- Garden with fruit trees

In addition, 1 km from the facilities there are beach facilities by the sea. Beach facilities have restaurants and cafeterias.

Construction start date: 30.03.2023

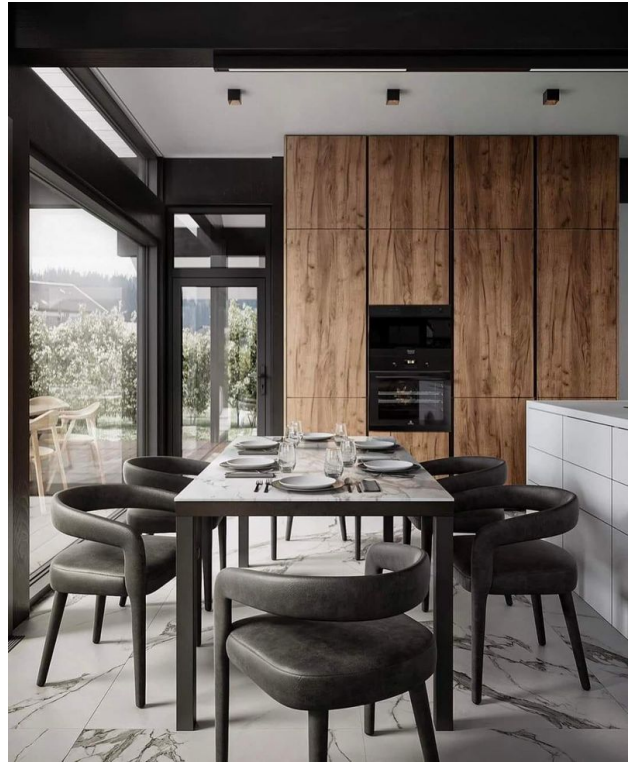
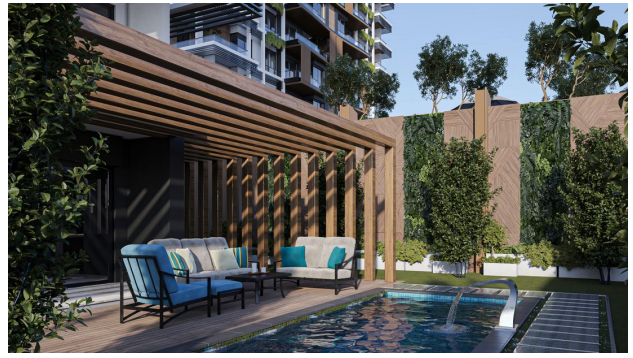
Construction completion date: 30.06.2024

Information updated: 08.11.2024

Photo gallery











Scan the QR code to open the original page