







Apartments in a new building with amenities and beautiful views in Istanbul, Küçükçekmece (114345)



250 000 €

 Floor area **114 m² - 149 m²**

 Number of rooms **2 bedrooms**
3 bedrooms

 Furnitures	Partly
 To the beach:	m
 Location:	Turkey, Istanbul
 To the airport:	km
 To the city centre:	km

Options

- ✓ Balcony/ Terrace
- ✓ Swimming pool
- ✓ Private territory
- ✓ 0% installment
- ✓ Garden
- ✓ Elevator
- ✓ Playground

Description

The multifunctional complex is located in the Kucukcekmece area on the European side of Istanbul and combines retail stores, residential apartments and amenities for residents.

The complex is located next to Küçükçekmece Lake and major highways including TEM and E-5, as well as in close proximity to the Istanbul Canal, which ensures a high return on investment in the future.

Completion is scheduled for 2024 and installments up to 24 hours are available for a short period of time.

months with a down payment of 50%.

The project consists of 2 blocks containing apartments **2 +1 and 3 + 1** ranging from 114 to 149

sq.m.

These two blocks are distinguished from the neighboring buildings by their taller concrete structures and modern design. Large voids with high ceilings remain at the main entrance to the buildings, providing vital resting points.

Inside the apartments, the kitchens are separated from the common area to provide a spacious and separate cooking area. Large terraces and balconies act as a transparent podium, offering smooth transitions between indoor and outdoor spaces.

Residents will be able to enjoy sunset and lake views from the comfort of their apartments, while panoramic windows let in plenty of natural light to make the space appear brighter and larger than it actually is.

The complex includes a wide range of social facilities, taking into account the needs of residents.

These amenities include:

- Fitness Centre,
- indoor pool,
- indoor and outdoor children's playgrounds,
- large gardens that provide a safe place for children to run,
- halls for parties and cinemas.

Community green spaces encourage communication with neighbors, and landscaping is specifically designed for residents to enjoy and observe the seasonal changes in nature.

Last but not least, covered parking reserved for residents only ensures the safety of your vehicles.

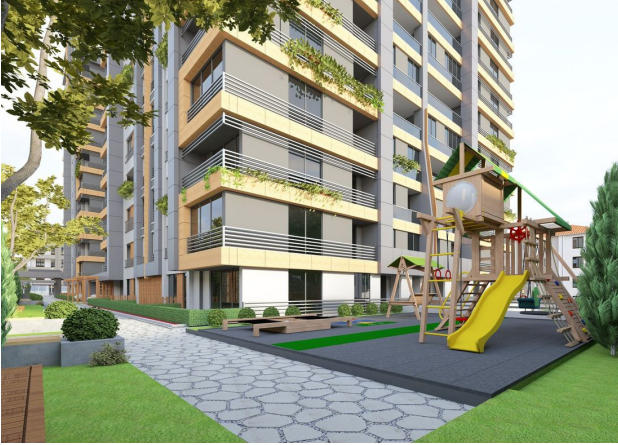
Distances:

- Coastline: 6 minutes
- Highway E-5: 5 minutes
- Marmaray Line: 4 minutes
- Metrobus line: 5 minutes
- Highway TEM: 15 minutes
- Istanbul Canal: 4 minutes
- Shopping mall: 15 minutes

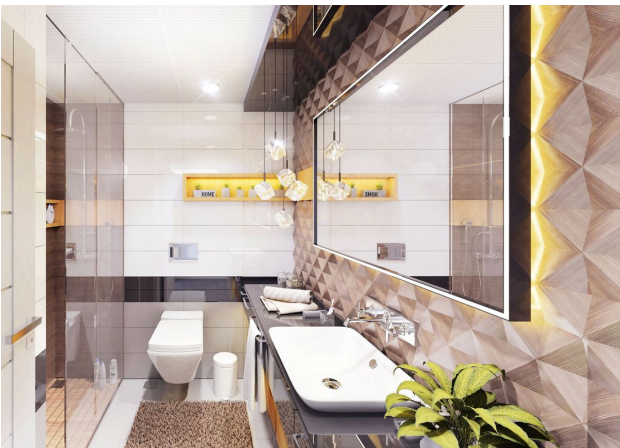
- New Airport: 35 minutes

Information updated: 24.06.2024

Photo gallery









Scan the QR code to open the original page