








Apartments in a new residential complex from the developer in the center of Alanya (009455)



350 000 € - 450 000 €

 Floor area	82 m² - 139 m²
 Number of rooms	2 bedrooms
	3 bedrooms
	2+1 penthouse
	3+1 penthouse
 Furnitures	Partly
 To the beach:	800 m
 Location:	Turkey, Alanya, Alanya centre
 To the airport:	35 km
 To the city centre:	km

Options

- ✓ Balcony/ Terrace
- ✓ Swimming pool
- ✓ Private territory
- ✓ Security
- ✓ Elevator
- ✓ Playground
- ✓ Generator

Description

Alanya is the warmest city in Turkey, almost tropical, it's not for nothing that bananas ripen here. At the same time, the heat is much easier to bear than in Antalya, for example, due to

the constant sea breeze.

Construction of a new residential complex, located in the heart of Alanya, in the Saray area, will begin in October 2024.

The apartments will be delivered in high-quality finishing with equipped bathrooms and built-in kitchen units.

A profitable investment offer - after the project is completed, prices will increase!!!

The area of the complex is 1310 m².

The project consists of two blocks.

The total number of apartments is 28 and one commercial premises.

Layouts:

- 4 apartments with layouts **2+1** (81.8 sq.m.)
- 15 apartments with **3+1** layouts (127-130 sq.m.)
- 8 **duplexes 2+1** (119-133 sq.m.)
- 1 **duplex 3+1** (138 sq.m.)
- 1 commercial premises - 102 m²

The complex has excellent infrastructure:

- the outdoor pool will function as a winter pool in winter
- indoor swimming pool
- children's playgrounds
- sauna
- lobby
- parking
- gazebo and barbecue
- Gym
- CCTV camera system

Characteristics of the apartments:

- Water heater
- Suspended ceiling

- Wall covering - washable paint
- Floor covering - ceramic tiles / laminate
- Kitchen set
- Complete bathroom with cabinets
- Aluminum double glazed windows
- Aluminum balcony railings + glass

Distance to the sea 800 meters.

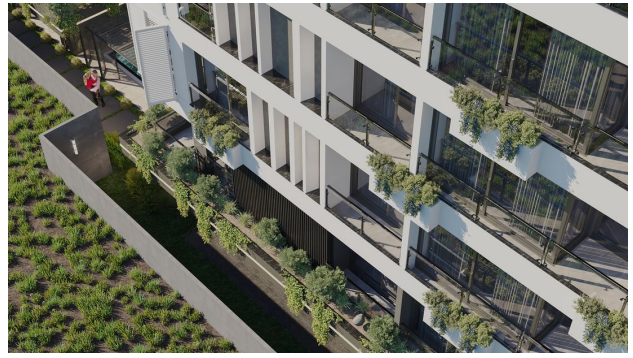
Payment plan:

- 25% down payment upon signing the contract
- 75% payment to be paid in equal monthly installments until completion of construction

Construction completion date: 03.2026

Information updated: 03.03.2025

Photo gallery



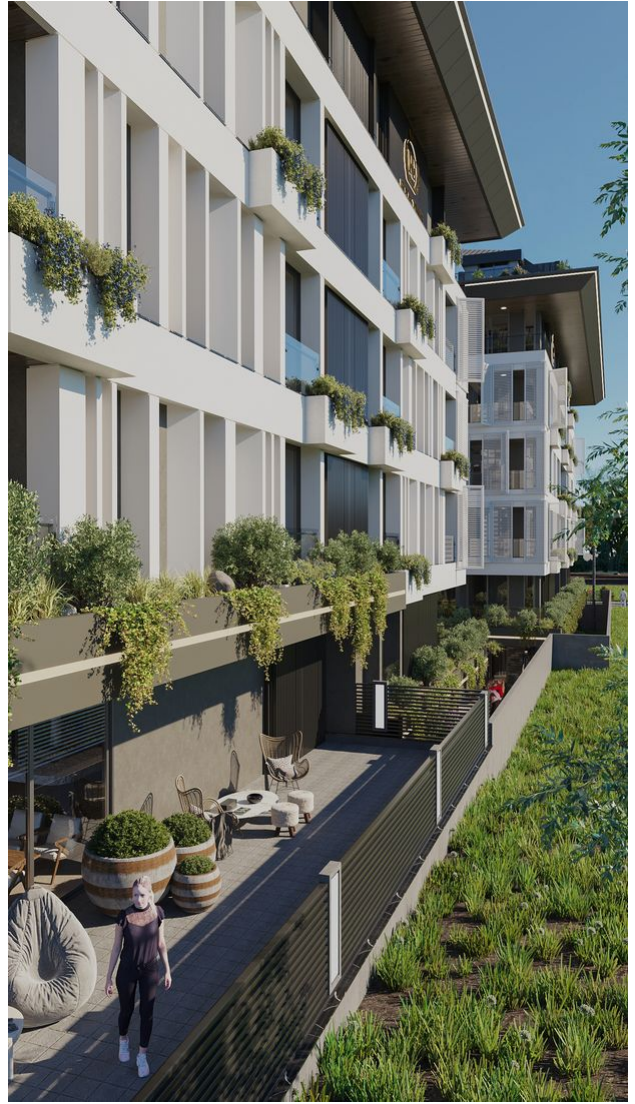
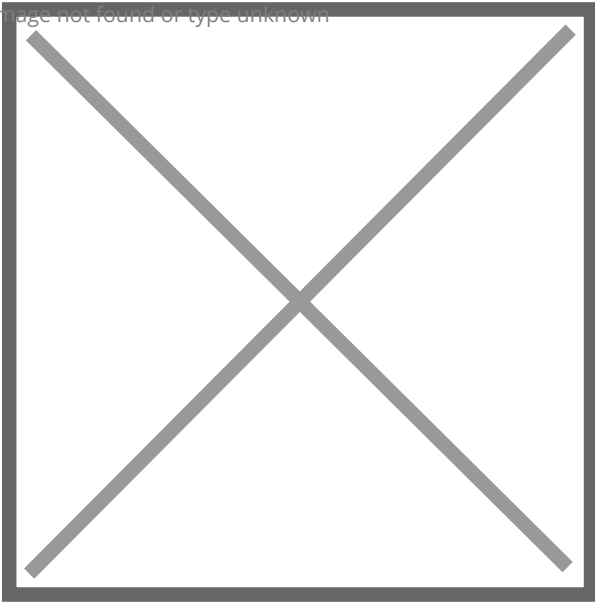
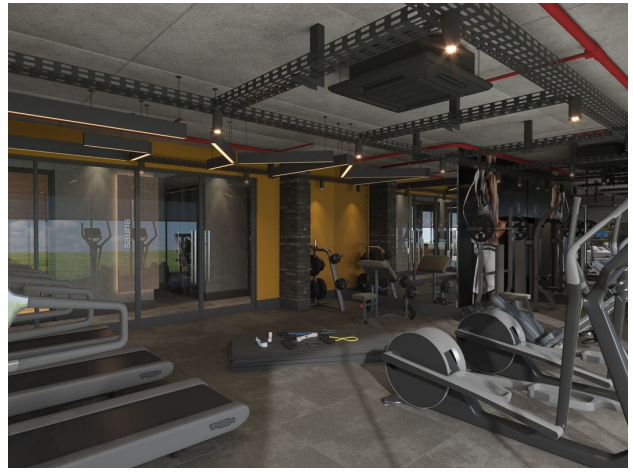
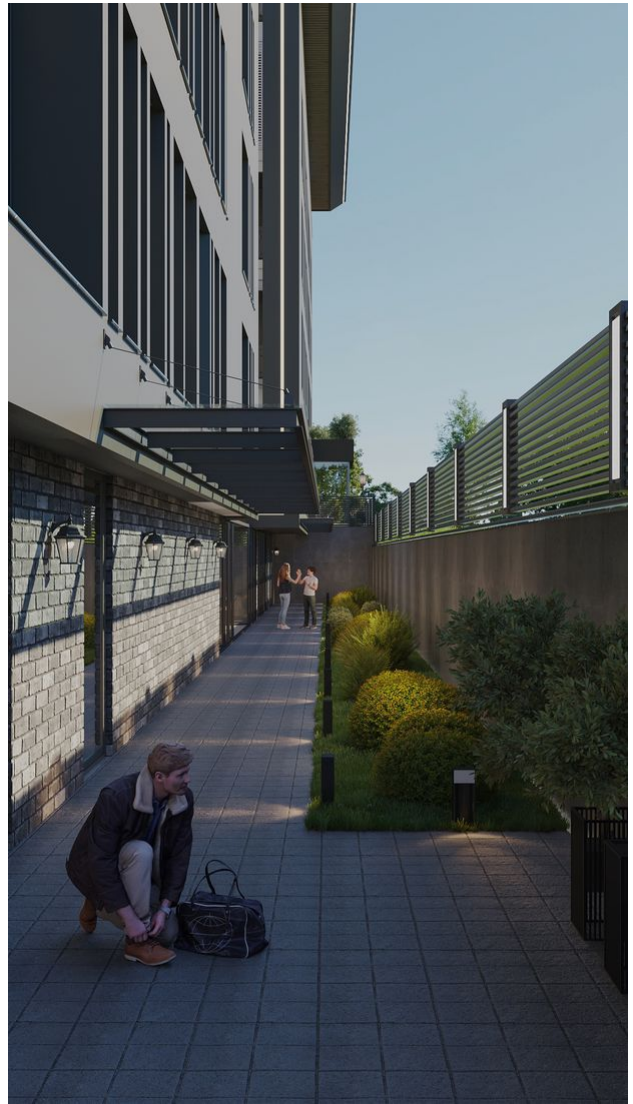


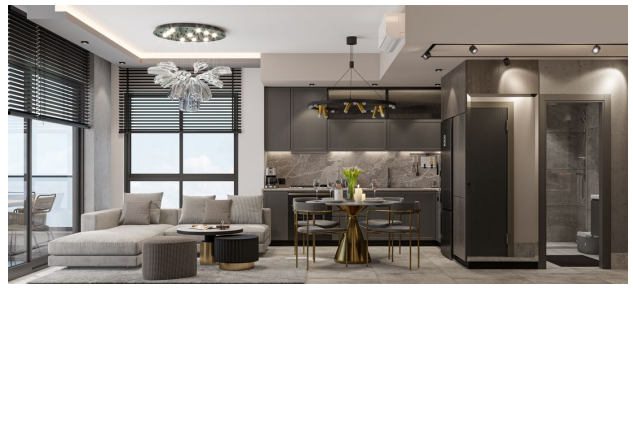


Image not found or type unknown











Scan the QR code to open the original page