

Apartment overlooking the center of London (001283)



1 075 400 €

 Floor area	61 m²
 Number of rooms	1 bedroom
 Furnitures	Partly
 To the beach:	m
 Location:	United Kingdom, London
 To the airport:	km
 To the city centre:	km

Options

- ✓ View of the city
- ✓ Private territory
- ✓ City center
- ✓ Elevator

Description

The shimmering towers rise to 68 floors.

Facilities:

- 24 hour concierge service
- Quay club gym
- 20 meter swimming pool
- treatment rooms
- living room with terrace on the 56th floor
- business lounge
- meeting room

A residential skyscraper that combines 2 sixty-eight-story towers.

The skyscraper was designed by the world's leading architects Foster + Partners.

Huge windows offer incredible views of Central London, Canary Wharf, the River Thames and more. The facades are bathed in flooding sunlight. Large landscaped terrace.

Gardens, its own bar and kitchen, and a wonderful lounge take up half of the 56th floor.

The interiors are made using custom-made furniture and exceptional natural materials.

The skyscraper was built to maximize space on 2 acres of greenery.

Accommodation will provide residents with a 5-star lifestyle as they become exclusive members of the wellness club.

Canary Wharf is a fantastic place to call home. Connected in all directions, this is a meeting

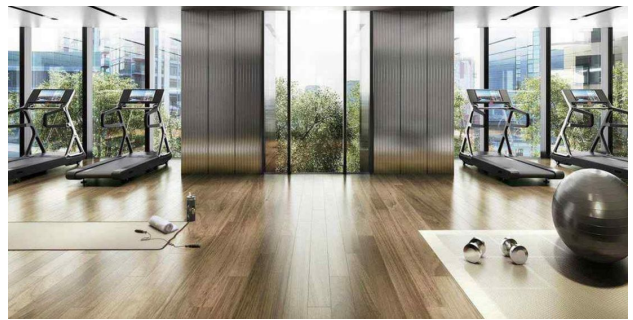
The apartments offer views of Central London, Canary Wharf and the River Thames.

Description:

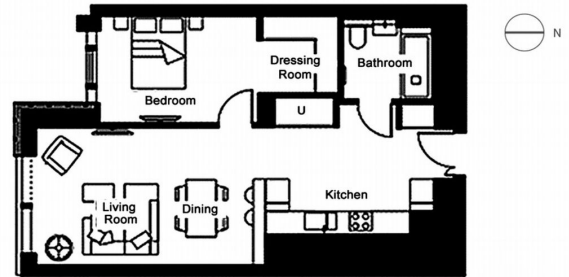
- 1 bedroom
- area 61.4 m²
- 53 floor

Information updated: 20.03.2024.

Photo gallery







Scan the QR code to open the original page