




Complex of apartments and bungalows on the east coast of the island in the Bahceli area (012272)



138 695 € - 879 954 €

 Floor area **49 m² - 350 m²**

 Number of rooms **Studio**
3 bedrooms
2+1 penthouse

| | |
|--|-------------------------------|
|  Furnitures | Partly |
|  To the beach: | 500 m |
|  Location: | North Cyprus, Esentepe |
|  To the airport: | km |
|  To the city centre: | km |

Options

- ✓ Balcony/ Terrace
- ✓ Swimming pool
- ✓ Private territory
- ✓ Outdoor parking
- ✓ Playground

Description

The project is located on the east coast of the island in the Bahceli area overlooking the deep blue Mediterranean Sea.

In front of the sea you can see the great mountains of Northern Cyprus, where the sun shines almost all year round. This region is full of beautifully landscaped green areas but is close to Kyrenia, only 30 minutes drive from shopping malls, cultural events and leading restaurants.

The project offers a fantastic panoramic sea view, not to mention the fact that the sea is only 7 minutes walk away. This location is ideal if you are looking for a quiet area with breathtaking scenery to live in all year round or you are looking for an exclusive holiday property in North Cyprus.

Consisting of 175 apartments, the complex includes spacious studios and 2-bedroom apartments with a garden, 1 and 2-bedroom penthouse apartments with a private rooftop

terrace where you can enjoy barbecues and drinks along with the amazing nature of the Mediterranean island, as well as impressive 3 -bedroom bungalow apartment with private pool, garden and rooftop.

All amenities are within the complex or within walking distance.

Completion date: summer 2025

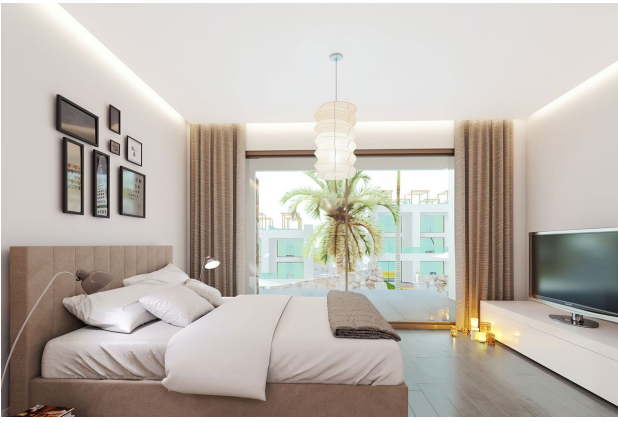
Information updated: 08.04.2025

Photo gallery









Scan the QR code to open the original page