






Apartments in a new stylish residential complex from a developer in the Oba area (003276)



149 500 € - 162 500 €

-  Floor area **54 m² - 111 m²**
-  Number of rooms **1 bedroom**
2+1 penthouse
-  Furnitures **Partly**
-  To the beach: **2000 m**
-  Location: **Turkey, Alanya, Oba**

✈ To the airport: **45 km**

🏙 To the city
centre: **4 km**

Options

- ✓ Balcony/ Terrace
- ✓ Swimming pool
- ✓ Private territory
- ✓ Outdoor parking
- ✓ Elevator
- ✓ Playground
- ✓ Generator

Description

A new stylish investment project in the Upper Oba area, which was developed by one of the leading architectural bureaus of the city according to the latest trends using the latest construction technologies.

A land plot of 1200 sq.m. has been allocated for the construction.

A feature of the residential complex is a low-rise building and a small number of apartments, which made it possible to achieve greater privacy for apartment buyers and develop an individual design for the facade of the building.

The residence consists of one block of 5 floors, includes 20 apartments:

- 15 1+1 apartments (55 m²)
- 5 duplex penthouses (101, 106 and 111 m²)

Corner apartments 1 + 1 face three cardinal points. Central - southern.

All apartments are rented with ready-made finishing, kitchen sets and fully equipped bathrooms.

Air conditioning units will be brought to a specially designated room on the outer facade of the building.

Roof - ceramic tiles, waterproofing, certified finishing materials.

Features of the apartments:

- Ceiling height - 3 m
- Thickness of internal walls - 13 cm
- Thickness of external walls - 22 cm
- Floor covering: 1 class ceramics
- Granite countertops in the kitchen area
- Interior doors - lacquered MDF
- Kitchen facade - laminated MDF
- Shower cabins

Remoteness:

- To the sea 2000 m
- To the supermarket 500 m
- Gazipasa Airport is 45 km away.
- Antalya Airport 130 km

Features of the complex:

- Sun lounge area in the water
- Indoor heated pool 27 sqm
- Children's pool 24 sq.m
- Garden
- car parking
- Alcove
- Children playground
- Children's playroom
- B-B-Q
- Lobby
- Sauna
- Gym
- Billiards

- Toilets and showers in the social area

Down payment 30%, the balance with the possibility of installments until the end of construction.

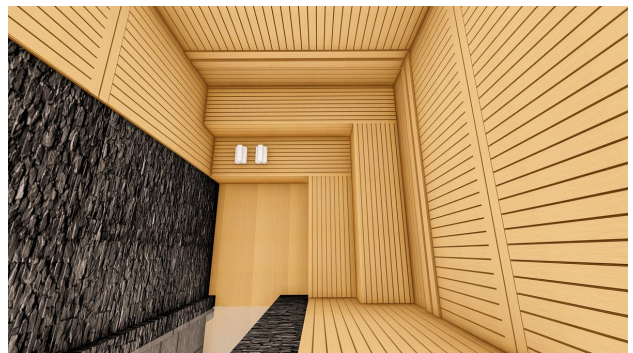
Start of construction 15.11.22

Completion of construction 15.12.2023

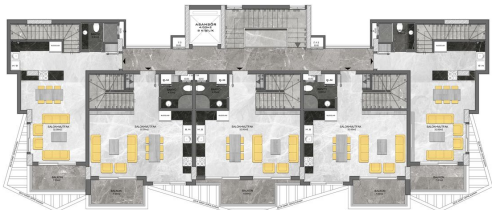
Information updated: 12.11.2024

Photo gallery









DÜBLENK DAİRE BRÜT M ² 87,00 M ² * 11,20 M ² = 976,40 M ² = 117,00 M ² + 43,00 M ² DİŞERİ ALANI = 164,00 M ²	DÜBLENK DAİRE BRÜT M ² 82,00 M ² * 11,20 M ² = 918,40 M ² = 108,00 M ² + 41,00 M ² DİŞERİ ALANI = 149,00 M ²	DÜBLENK DAİRE BRÜT M ² 87,00 M ² * 11,20 M ² = 976,40 M ² = 101,00 M ² + 39,00 M ² DİŞERİ ALANI = 140,00 M ²	DÜBLENK DAİRE BRÜT M ² 87,00 M ² * 11,20 M ² = 976,40 M ² = 108,00 M ² + 41,00 M ² DİŞERİ ALANI = 149,00 M ²	DÜBLENK DAİRE BRÜT M ² 87,00 M ² * 11,20 M ² = 976,40 M ² = 111,00 M ² + 43,00 M ² DİŞERİ ALANI = 164,00 M ²
--	--	--	--	--

3. KAT PLANI



4. KAT PLANI



Scan the QR code to open the original page