





Apartments in a new luxury project in Esentepe (001284)



495 338 € - 3 030 306 €

-  Floor area **50 m² - 220 m²**
-  Number of rooms **1 bedroom**
3 bedrooms
5 bedrooms
-  Furnitures **Partly**
-  To the beach: **m**
-  Location: **North Cyprus, Esentepe**

 To the airport: **km**

 To the city
centre: **km**

Options

- ✓ Sea view
- ✓ Mountain view
- ✓ Balcony/ Terrace
- ✓ Swimming pool
- ✓ Private territory
- ✓ Outdoor parking
- ✓ 0% installment
- ✓ Security
- ✓ Playground

Description

New great luxury project.

The complex is located on the high cliffs of the Mediterranean coast in Esentepe, which is one of the most popular villages in Northern Cyprus.

The complex is located on a land plot of 22,000 sq.m.

Amenities include a swimming pool, landscaped garden, jacuzzi, tennis, café, management office and full maintenance.

The project consists of 3 blocks of 1+1 and 2+1 luxury penthouses and apartments with garden, 2 villas with private pools and 3 bungalows with shared pool.

All villas and apartments have incredible views of the sea and mountains.

Prices include - underfloor heating, VRF air conditioning, BBQ and sink on the roof terrace and quality finishes.

The complex is located one hundred meters from the sea, a 5-minute drive from the Korineum golf course, a 30-minute drive from Kyrenia town and a 45-minute drive from Ercan Airport.

Location:

- 100 meters from the sea
- 5 minutes drive to Korineum Golf Course
- 30 minutes drive to Kyrenia city
- 45 minutes from Ercan Airport

Payment plan:

- 50% - upon registration of the contract
- 25% - for floor construction and tile laying
- 20% - when installing windows and doors
- 5% - upon handing over the keys

Construction completion date: 12.2023

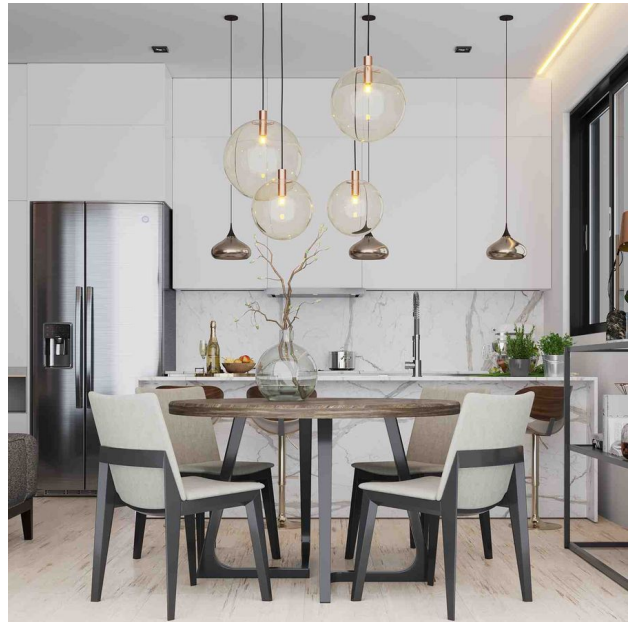
Information updated: 08.10.2024

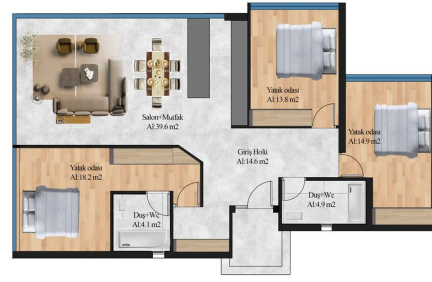
Photo gallery











ZEMİN KAT PLANI TIP 1
ÖLÇEK 1/100
BRÜT ALAN:125 m²



ZEMİN KAT PLANI TIP 2
ÖLÇEK 1/100
BRÜT ALAN:125 m²



ZEMİN KAT PLANI TIP 3
ÖLÇEK 1/100
BRÜT ALAN:125 m²



Scan the QR code to open the original page