


# New low-rise complex with luxury large apartments in Lapta (004300)






**186 480 € - 407 925 €**

 Floor area **95 m<sup>2</sup> - 180 m<sup>2</sup>**

 Number of rooms **2 bedrooms**

 Furnitures **Partly**

-  To the beach: **1000 m**
-  Location: **North Cyprus, Kyrenia**
-  To the airport: **km**
-  To the city centre: **km**

## Options

- ✓ Sea view
- ✓ Mountain view
- ✓ Balcony/ Terrace
- ✓ Swimming pool
- ✓ Private territory
- ✓ Outdoor parking
- ✓ 0% installment
- ✓ Security
- ✓ Playground

## Description

A new low-rise complex with luxurious large apartments, which is located in Lapta and has stunning views of the sea and mountains, literally 7 minutes from the Babil restaurant and an authentic hotel with high ratings on booking, and a beach with a Beach Club is also a 5-minute drive away, despite the fact that that the complex is located in a quiet, secluded place surrounded by greenery, at the same time all the infrastructure is nearby - shops, restaurants, schools, etc.

### Apartments:

- 2+1

**The infrastructure includes:** a large communal swimming pool, an area with landscape design of more than 1000 m2!

Each housing has its own parking space, the area is closed. The price of the apartment includes kitchen furniture and modern wardrobes in the bedrooms.

Distance to the sea 1000 meters.

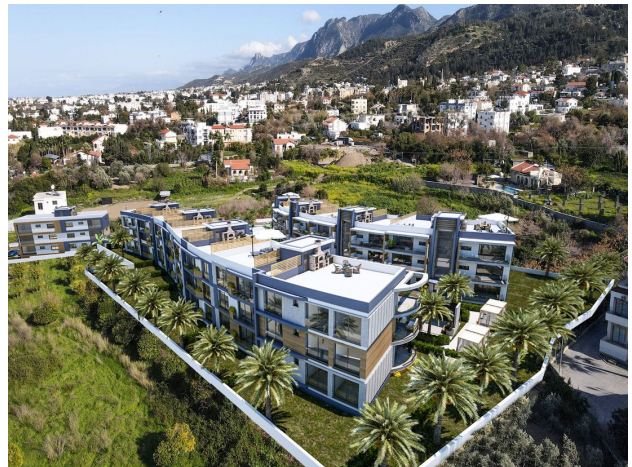
**Payment plan:**

- 35% down payment
- Installment plan 35% before handing over the keys
- 30% interest-free installments for 12 months after handing over the keys

Construction completion date: 09.2025

**Information updated: 11.04.2025**

## Photo gallery















Scan the QR code to open the original page