








# Apartments in a modern complex under construction in the Pendik district of Istanbul (005485)



# 500 000 €

 Floor area	<b>65 m<sup>2</sup> - 140 m<sup>2</sup></b>
 Number of rooms	<b>2 bedrooms</b>
	<b>3 bedrooms</b>
 Furnitures	<b>Partly</b>
 To the beach:	<b>1600 m</b>
 Location:	<b>Turkey, Istanbul</b>
 To the airport:	<b>17 km</b>
 To the city centre:	<b>km</b>

## Options

- ✓ Sea view
- ✓ Balcony/ Terrace
- ✓ Private territory
- ✓ Outdoor parking
- ✓ 0% installment
- ✓ Security
- ✓ Elevator
- ✓ Playground
- ✓ Generator

## Description

In the under construction complex, the doors to a happy and peaceful life await you, where you will wake up to a better day with your family and loved ones.

Apartments for sale in a modern complex in the Pendik district of Istanbul.

### **Layouts:**

- 2+1 area 65 m<sup>2</sup>. The apartments are located from the 1st to 5th floors of a 6-story building and consist of a hall, an American-style living room, two bedrooms, a bathroom and a balcony.
- 3+1 area 140 m<sup>2</sup>

Modern low-rise complex with an elevator and local area. An ideal option for families who value comfort. The complex is located near the Bosphorus, the view of which opens from the upper floors of the house.

The complex consists of one residential 6-storey block and a closed area with parking and a recreation area. The modern architecture of the building is combined with proximity to historical monuments.

The convenient location of the complex - proximity to the airport, hospital, metro, recreation and picnic parks and convenient road interchange - will allow you to enjoy life close to nature and not miss the active rhythm of the city.

Completion of construction: 2025.

### **Distances:**

- Metro line: 5 km
- Beach: 1.6 km
- Railway station: 1.4 km
- Airport: 17.4 km
- Shop: 300 m
- Hospital: 2.2 km

### **Infrastructure:**

- Elevator
- Satellite TV
- Parking

- Rest zone
- Garden
- 24/7 surveillance cameras

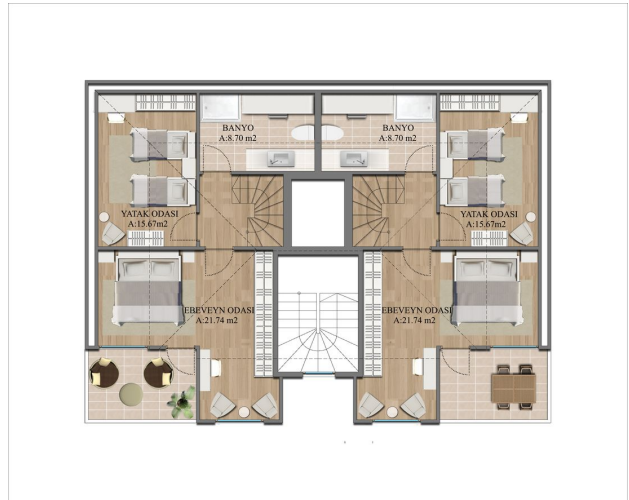
### **Apartment characteristics:**

- Built-in kitchen unit
- Full set of plumbing
- PVC windows with double glazing
- Lighting

**Information updated: 11.01.2024**

## **Photo gallery**







Scan the QR code to open the original page