


Spacious apartments in a residential complex from the developer in the Konyalti area, Antalya (004322)



500 000 €

- 🏠 Floor area** 162 m² - 191 m²
- 🏠 Number of rooms** 2+1 penthouse
3+1 penthouse
- 🪑 Furnitures** Partly

 To the beach: **2000 m**

 Location: **Turkey, Antalya**

 To the airport: **26 km**

 To the city centre: **km**

Options

- ✓ Balcony/ Terrace
- ✓ Swimming pool
- ✓ Private territory
- ✓ Outdoor parking
- ✓ 0% installment
- ✓ Security
- ✓ Elevator
- ✓ Playground
- ✓ Generator

Description

Antalya is the tourist capital of Turkey and one of the most popular holiday destinations in the Middle East and Europe. Thanks to its excellent climate and comfortable living environment, the region attracts the attention of both locals and foreigners.

In addition, Antalya and Konyaalti, with their constantly developing urban infrastructure, are profitable investment locations.

The new project harmoniously combines laconic design and modern lifestyle. In this first class a complex with a rich infrastructure, located in a prime location, creates all the conditions for your comfortable stay.

The project is located in a picturesque location that combines the splendor of the Taurus Mountains and the blue of the Mediterranean Sea!

On the northern side you can admire the picture of mountains and valleys, and on the southern side you will have views of the endless sea.

Total area of the site – 4598 m²

Consists of 2 blocks.

58 apartments, 7 shops

Location:

- Konyaalti Beach 1.7 km
- International Russian School 2 km
- Shopping center 500 m
- Hospital 4 km
- 2M Migros 50 m
- Old Town 11 km
- Ski resort Saklikent 45 km
- Airport 25 km
- Kemer 30 km
- Ancient city of Phaselis 35 km
- Women's Beach 1.5 km
- Antalya Aquarium 6 km
- Water park 6 km
- Lunapark 6 km

Project infrastructure:

- Generator
- Communal pool
- Children's swimming pool
- Fitness, sauna
- Vehicle recognition system
- Surface and underground parking
- LED lighting in the halls

- Gazebo and special elements
- Landscaped garden
- Elevator
- Central satellite TV
- Heated floors (Buderus boiler)
- Automatic blinds on all windows

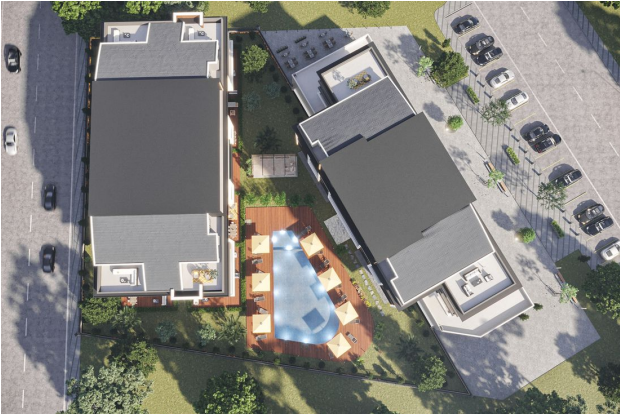
Installment terms: 50% down payment. Installment plan for 12 months.

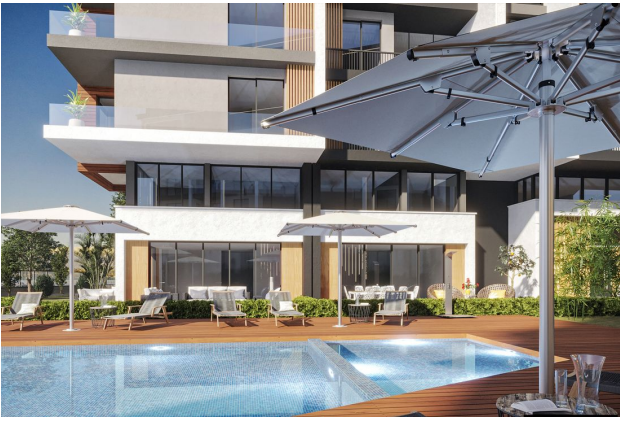
Submission date: 30.03.2024

Information updated: 25.06.2024

Photo gallery









Scan the QR code to open the original page