

Spacious apartment in a residential complex located just 700 meters from La Mata beach (118237)



510 400 €

-  Floor area **124 m²**
-  Number of rooms **3 bedrooms**
-  Furnitures **Partly**

 To the beach: **700 m**

 Location: **Spain, Torrevieja**

 To the airport: **km**

 To the city centre: **km**

Options

- ✓ Balcony/ Terrace
- ✓ Swimming pool
- ✓ Private territory
- ✓ Elevator
- ✓ Playground

Description

The residential complex is located just 700 meters from La Mata beach, directly opposite the Torremarina shopping center with shops of all kinds and a large supermarket.

We are currently offering for sale the first block of 362 homes, with 50 luxury 2 bedroom, 2 bathroom apartments and 3 bedroom, 2 bathroom penthouses.

The ground floors with private garden and 3 bedroom penthouses have a large private solarium.

All houses have large south-east facing front terraces with sea views and frontal views of the urbanization's gardens and swimming pools.

The urbanization will be completely fenced, with lawns and gardens, two swimming pools for adults, one for children, a gym between two swimming pools for adults and parking for bicycles and vehicles.

All apartments have a surface parking space.

The estimated delivery date for the first block is the end of 2024, the pilot floor is already ready for visiting, next to block 1.

All payments made are guaranteed by bank guarantees in accordance with the Law.

Homes include pre-installation of air conditioning, electric blinds, lighting in bathrooms and kitchens, and this month also a full white goods package.

Description of the apartment:

- Bedrooms: 3
- City: Torre Vieja
- Bathrooms: 2
- Area: La Mata
- Cuisine: American
- Usable area: 98 m²
- Built-up area: 124 m²
- Year of construction: 2024
- Terrace: 23 m²
- Floor number: 5

Information updated: 15.02.2024

Photo gallery



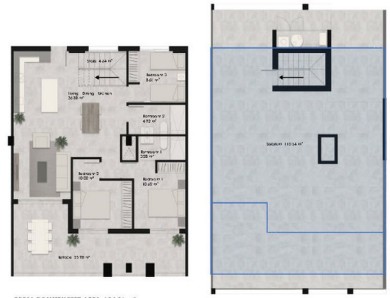




VIVENDA TIPO D_PLANTA 5º + SOLARIUM
D. Apartment 5º floor: 2BR + 2B + solarium.



PROYECTO DE ARQUITECTURA DE INTERIOR PARA UN APARTAMENTO DE 5º PISO Y SOLARIUM. SECCIONES Y PLANTAS. ARQUITECTO: J. M. GARCÍA DE LA ROSA. AÑO: 2010. ESCALA: 1:100.



TOTAL CONSTRUCTED AREA: 124.36 m²
TOTAL USABLE AREA: 214.63 m²

ESCALA: 1:100