





# Apartment in a new residential complex 200 meters from the central beach of Del Cura in Torrevieja (128237)




**279 000 €**

-  Floor area **109 m<sup>2</sup>**
-  Number of rooms **3 bedrooms**
-  Furnitures **Partly**
-  To the beach: **250 m**

 Location: **Spain, Torrevieja**

 To the airport: **km**

 To the city  
centre: **km**

## Options

- ✓ Balcony/ Terrace
- ✓ Swimming pool
- ✓ Private territory
- ✓ Security
- ✓ Elevator

## Description

A modern embodiment of comfort awaits you in this new residential building, which is located just 200 meters from the central beach of Del Cura in Torrevieja.

This house, consisting of 10 apartments, offers excellent amenities including a communal swimming pool, sauna and cozy relaxation area.

### Description of apartments:

- Bedrooms: 3
- Bathrooms: 2
- Living rooms: 1
- Kitchen: American - furnished
- Usable area: 83 m<sup>2</sup>
- Built-up area: 109 m<sup>2</sup>
- Terrace: 10 m<sup>2</sup>
- Floor number: 1
- Heating: heated floors in bathrooms
- BBQ: Yes

- Conditioner: Preinstalacion Por Conductos
- Outdoor terrace: Yes
- Covered terrace: Yes
- Outdoor shower: Yes
- Double glazing: Yes
- Unfurnished: Yes
- Armored door: Yes
- Elevator: Yes
- Distance to the sea: 250 m.

Each of these apartments is a spacious space providing you with maximum comfort and pleasure.

These apartments are ideal for both permanent living and holiday living, combining luxury and practicality. Here you are just a block away from the beach and activities that make living at this resort so convenient.

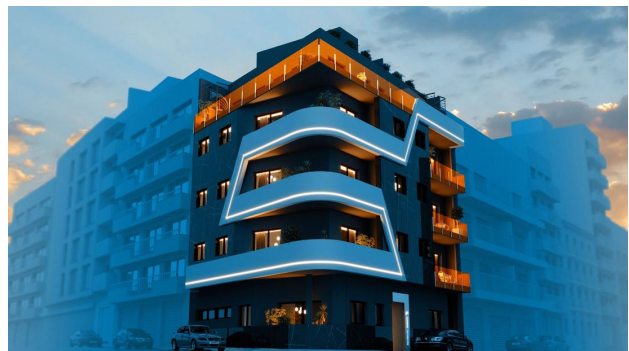
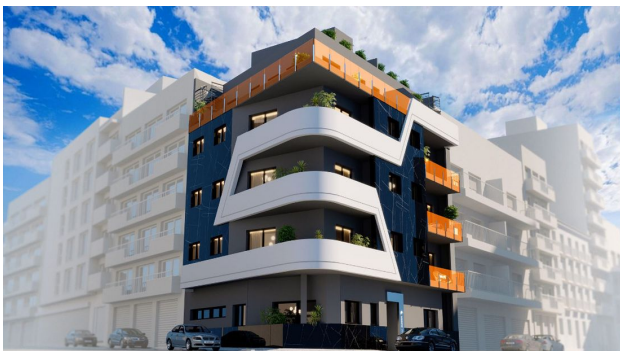
These apartments are designed with your comfort and safety in mind, including underfloor heating in the bathrooms, double glazing, security doors and a lift.

Construction completion date: 2024

This apartment is your personal piece of paradise near the sea.

**Information updated: 15.02.2024**

## Photo gallery









VIVIENDA D - PL. 1º

SUPERFICIES ÚTILES		
1	Salón comedor-cocina	30,80m²
2	Terraza	10,25m²
3	Dorm. Principal	12,20m²
4	Dorm.	11,25m²
5	Dorm.	11,15m²
6	Baño	3,80m²
7	Baño	3,80m²
TOTAL SUP. ÚTIL		83,15m²
TOTAL SUP. CONST. P.P.+TERRAZA		109,06m²



VIVIENDA TIPO D - PL. 1º

Plano orientativo sujeto a modificaciones en proyecto. No constituye un documento contractual. Se va sustituyendo por otro en el momento de la firma de la compra-venta. La distribución de los muebles de cocina como el resto de la decoración es meramente orientativa.