

# Spacious apartments in a luxury residential complex in Altıntaş, Antalya (001488)



**470 000 € - 1 050 000 €**


**🏠 Floor area**      **159 m<sup>2</sup> - 236 m<sup>2</sup>**


**🏠 Number of rooms**      **2 bedrooms**  
**3 bedrooms**  
**4 bedrooms**

**🪑 Furnitures**      **Partly**

**🌊 To the beach:**      **m**

**📍 Location:**      **Turkey, Antalya**

 To the airport: km

 To the city  
centre: km

## Options

- ✓ Balcony/ Terrace
- ✓ Swimming pool
- ✓ Private territory
- ✓ Outdoor parking
- ✓ 0% installment
- ✓ Security
- ✓ Elevator
- ✓ Playground

## Description

The complex, in the Altyntash district, the total project area is 61,528 m<sup>2</sup>.

The project consists of 4 blocks. 3 blocks A, B, C of the project - 150 residential premises are built under the "HAYAT HOMES" brand.

The complex has a living space that includes many possibilities.

### Plans for sale:

- 2+1
- 3+1
- 4+1

In blocks A and C there are 2+1 apartments with an area of 158 m<sup>2</sup>, 3+1 apartments with an area of 235 m<sup>2</sup>, 4+1 apartments with an area of 226 m<sup>2</sup>.

On the balconies there are swimming pools ranging from 6 to 11 m<sup>2</sup>.

In addition, each bedroom has a separate bathroom and a shared toilet.

In block B there are 4 2+1 apartments on each floor with an area of 158m<sup>2</sup>. There is no swimming pool on the balconies in block B.

In residences, you can adjust daylight to suit your façade using a movable separator system. In contrast to the classic typology of houses, the project is presented in natural color schemes with modern details.

It combines the pleasures of leisure and living and is designed in an elegant and natural style. These residential premises are designed as comfortable and luxurious residences.

Also for our guests who want to stay for a long time in the hotel, 101 hotel rooms are intended for our guests coming on a long business trip or on vacation. The hotel has hotel residences, indoor and outdoor swimming pools, a water park, Turkish bath, sauna, SPA center, fitness center, conference rooms, etc.

#### **Paid or free services:**

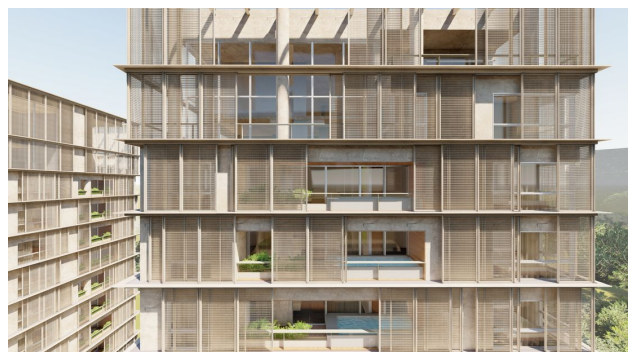
- 24/7 high level security service
- 24/7 technical service
- room service 7/24
- video surveillance system on the territory and in places
- smart home system
- heated floors
- apartment pool maintenance
- concierge services
- dry cleaning
- valet parking
- VIP transfer
- car rental
- conference hall
- cafe

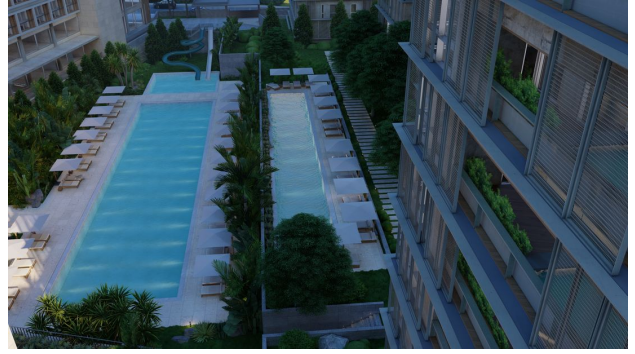
#### **Payment plan:**

- with a down payment of 30% installments for 60 months
- with a down payment of 50% installments for 12 months

Information updated: 21.06.2024

## Photo gallery









A BLOK  
ZEMİN KAT PLANI

| TIP 4 (3+1)                             |
|---|
| NET ALAN: 194,23 M <sup>2</sup>         |
| BRÜT ALAN: 235,88 M <sup>2</sup>        |
| ANTRE : 9,89 m <sup>2</sup>             |
| SALON+MUTFAK : 70,72 m <sup>2</sup>     |
| HOL : 10,59 m <sup>2</sup>              |
| WC : 3,91 m <sup>2</sup>                |
| BALKON : 19,55 m <sup>2</sup>           |
| HAVUZ : 11,50 m <sup>2</sup>            |
| YATAK ODASI 1 : 15,87 m <sup>2</sup>    |
| E.BANYO 1 : 4,37 m <sup>2</sup>         |
| YATAK ODASI 2 : 15,76 m <sup>2</sup>    |
| E.BANYO 2 : 4,60 m <sup>2</sup>         |
| EBV. YATAK ODASI : 21,73 m <sup>2</sup> |
| EBV. BANYO : 5,98 m <sup>2</sup>        |

| TIP 6 (2+1)                             |
|---|
| NET ALAN: 130,92 M <sup>2</sup>         |
| BRÜT ALAN: 158,99 M <sup>2</sup>        |
| ANTRE : 13,22 m <sup>2</sup>            |
| SALON+MUTFAK : 42,56 m <sup>2</sup>     |
| WC : 3,19 m <sup>2</sup>                |
| BALKON : 11,39 m <sup>2</sup>           |
| HAVUZ : 6,84 m <sup>2</sup>             |
| YATAK ODASI : 18,23 m <sup>2</sup>      |
| E.BANYO : 4,16 m <sup>2</sup>           |
| EBV. YATAK ODASI : 26,20 m <sup>2</sup> |
| EBV. BANYO : 5,13 m <sup>2</sup>        |

| TIP 5 (4+1)                             |
|---|
| NET ALAN: 186,13 M <sup>2</sup>         |
| BRÜT ALAN: 226,07 M <sup>2</sup>        |
| ANTRE : 13,38 m <sup>2</sup>            |
| SALON+MUTFAK : 74,45 m <sup>2</sup>     |
| WC : 3,60 m <sup>2</sup>                |
| BALKON : 11,64 m <sup>2</sup>           |
| HAVUZ : 11,64 m <sup>2</sup>            |
| YATAK ODASI 1 : 15,00 m <sup>2</sup>    |
| E.BANYO 1 : 4,30 m <sup>2</sup>         |
| YATAK ODASI 2 : 13,61 m <sup>2</sup>    |
| ÇOCUK ODASI : 10,47 m <sup>2</sup>      |
| BANYO : 5,58 m <sup>2</sup>             |
| EBV. YATAK ODASI : 16,29 m <sup>2</sup> |
| EBV. BANYO : 6,17 m <sup>2</sup>        |



A BLOK  
1., 2., 3., 4., 5., 6., 7., 8., 9., 10., 11., 12., ve 13. KAT PLANI

| TIP 7 (2+1) (DUBLEX ALT KAT)         |
|--------------------------------------|
| NET ALAN: 226,49 M <sup>2</sup>      |
| BRÜT ALAN: 314,00 M <sup>2</sup>     |
| ANTRE : 9,79 m <sup>2</sup>          |
| SALON+MUTFAK : 96,78 m <sup>2</sup>  |
| HOL : 20,26 m <sup>2</sup>           |
| WC : 5,06 m <sup>2</sup>             |
| BALKON : 9,98 m <sup>2</sup>         |
| HAVUZ : 9,12 m <sup>2</sup>          |
| YATAK ODASI 1 : 28,36 m <sup>2</sup> |
| BANYO 1 : 6,42 m <sup>2</sup>        |

| TIP 9 (3+1) (DUBLEX ALT KAT)         |
|--------------------------------------|
| NET ALAN: 248,92 M <sup>2</sup>      |
| BRÜT ALAN: 343,92 M <sup>2</sup>     |
| ANTRE : 6,73 m <sup>2</sup>          |
| HOL : 16,60 m <sup>2</sup>           |
| SALON : 69,86 m <sup>2</sup>         |
| MUTFAK : 20,94 m <sup>2</sup>        |
| WC : 3,74 m <sup>2</sup>             |
| BALKON : 14,58 m <sup>2</sup>        |
| HAVUZ : 11,00 m <sup>2</sup>         |
| HOL : 3,80 m <sup>2</sup>            |
| ÇAMAŞIR ODASI : 2,88 m <sup>2</sup>  |
| YATAK ODASI 1 : 12,82 m <sup>2</sup> |
| BANYO 1 : 4,07 m <sup>2</sup>        |

| TIP 8 (6+1) (DUBLEX ALT KAT)            |
|---|
| NET ALAN: 406,40 M <sup>2</sup>         |
| BRÜT ALAN: 563,27 M <sup>2</sup>        |
| ANTRE : 7,91 m <sup>2</sup>             |
| HOL / VESTİYER : 15,93 m <sup>2</sup>   |
| SALON : 80,75 m <sup>2</sup>            |
| MUTFAK : 21,56 m <sup>2</sup>           |
| KILER : 7,43 m <sup>2</sup>             |
| WC : 3,11 m <sup>2</sup>                |
| BALKON : 38,34 m <sup>2</sup>           |
| HAVUZ : 10,78 m <sup>2</sup>            |
| HOL : 3,24 m <sup>2</sup>               |
| YATAK ODASI 2 : 20,73 m <sup>2</sup>    |
| BANYO 2 : 4,19 m <sup>2</sup>           |
| GECE HOLÜ : 3,43 m <sup>2</sup>         |
| EBV. YATAK ODASI : 34,74 m <sup>2</sup> |
| EBV. BANYO : 10,18 m <sup>2</sup>       |
| GYİME ODASI : 12,58 m <sup>2</sup>      |



A BLOK  
14. KAT PLANI (DUBLEX ALT KAT)

**TIP 7 (2+1) (DUBLEX ÜST KAT)**NET ALAN: 226,49 M<sup>2</sup>  
BRÜT ALAN: 314,00 M<sup>2</sup>HOL : 3,04 m<sup>2</sup>  
EBV. YATAK ODASI : 40,69 m<sup>2</sup>  
EBV. BANYO : 7,09 m<sup>2</sup>**TIP 9 (3+1) (DUBLEX ÜST KAT)**NET ALAN: 248,18 M<sup>2</sup>  
BRÜT ALAN: 343,92 M<sup>2</sup>HOL : 4,26 m<sup>2</sup>  
YATAK ODASI 1 : 26,96 m<sup>2</sup>  
BANYO 1 : 8,57 m<sup>2</sup>  
EBV. YATAK ODASI : 33,52 m<sup>2</sup>  
EBV. BANYO : 8,57 m<sup>2</sup>**TIP 8 (6+1) (DUBLEX ÜST KAT)**NET ALAN: 406,40 M<sup>2</sup>  
BRÜT ALAN: 563,27 M<sup>2</sup>HOL : 16,96 m<sup>2</sup>  
YATAK ODASI 3 : 21,80 m<sup>2</sup>  
BANYO 3 : 7,67 m<sup>2</sup>  
YATAK ODASI 4 : 17,73 m<sup>2</sup>  
BANYO 4 : 5,03 m<sup>2</sup>  
YATAK ODASI 5 : 20,13 m<sup>2</sup>  
BANYO 5 : 4,79 m<sup>2</sup>  
YATAK ODASI 6 : 28,03 m<sup>2</sup>  
BANYO 6 : 5,15 m<sup>2</sup>  
ÇAMAŞIR ODASI : 4,21 m<sup>2</sup>

A BLOK  
ÇATI KATI PLANI (DUBLEX ÜST KAT)