

Apartment complex in the picturesque Tatlysu area on the first coastline (011194)



247 378 € - 1 130 246 €

-  Floor area **43 m² - 78 m²**
-  Number of rooms **1 bedroom**
2 bedrooms
-  Furnitures **Full**
-  To the beach: **100 m**
-  Location: **North Cyprus, Kyrenia**
-  To the airport: **46 km**

 To the city
centre: km

Options

- ✓ White goods
- ✓ Furniture
- ✓ Balcony/ Terrace
- ✓ Swimming pool
- ✓ Private territory
- ✓ Outdoor parking
- ✓ 0% installment
- ✓ Security
- ✓ Playground
- ✓ Generator

Description

The complex is located on 80 hectares of land in the picturesque Tatlysu area on the first coastline.

The concept of the project is READY TO MOVE. The price includes furniture and household appliances. Modern kitchen and bathrooms. Central air conditioning system. Card entry system.

The residential complex has 2 phases.

LAYOUTS:

- apartment type A 1+1
- apartment type B 1+1 with garden
- penthouses 2+1

Location:

- University 33.00 km
- Airport 46.30 km
- Shops and markets 1.00 km
- Primary schools 15.00 km
- Hospital 14.00 km
- Beach 0.10 km

The purchase price includes:

- Modern furniture
- Modern kitchen fittings
- Kitchen appliances
- High quality plumbing
- Central air conditioning
- Electronic key system

Infrastructure:

- Communal pools
- Indoor heated pool
- Spa and Hammam
- Fitness and wellness center
- Tennis courts
- Restaurant
- Reception
- Beach cinema
- Sand beach

The resort will feature a variety of high-quality services and amenities for a relaxing and healthy Mediterranean lifestyle.

- Fantastic location between sea and mountains
- Breathtaking panoramic views of the Mediterranean Sea
- High standard architecture and finishing
- Extensive luxury amenities and service

- Excellent investment opportunity
- Flexible payment options
- Tennis court and basketball
- Outdoor yoga and water sports.

Why is it worth buying from this project?

- Construction warranty 5 years
- Backup generator
- Energy saving brick
- Aluminum window frames
- Selecting quality tiles and ceramics
- Central heating
- Fully designed and planted garden
- Thermal and sound insulation
- Maintenance (gardening, cleaning)

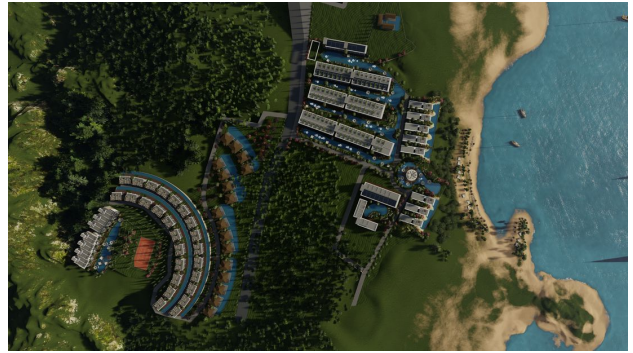
Payment plan:

- Deposit £5,000 as reserve for 1 month
- 35% when signing a contract after 1 month
- 65% installment plan starting from January 2024 until keys are handed over (approximately December 2026)

Construction completion date: 12.2026

Information updated: 09.08.2024

Photo gallery







Scan the QR code to open the original page