

# Cozy apartments in a residential complex in the center of Iskele (005491)



**167 249 € - 2 010 491 €**

**🏠 Floor area**      **46 m<sup>2</sup> - 145 m<sup>2</sup>**

**🏠 Number of rooms**

- Studio**
- 1 bedroom**
- 2 bedrooms**
- 3+1 penthouse**

**🪑 Furnitures**      **Partly**

**🌊 To the beach:**      **550 m**

 Location: **North Cyprus, Iskele**

 To the airport: **km**

 To the city  
centre: **km**

## Options

- ✓ Sea view
- ✓ Balcony/ Terrace
- ✓ Swimming pool
- ✓ Private territory
- ✓ 0% installment
- ✓ Security
- ✓ Elevator
- ✓ Playground

## Description

A project that embodies contemporary style and the unique Mediterranean living experience of Long Beach.

Located in the center of Iskele, it offers not just a home, but a whole life filled with celebration and personifying luxury and comfort.

With magnificent sea views, the complex covers 2.5 hectares, comprising 5 blocks and 416 varied apartments, including hotel rooms.

Living in the complex means attractive Long Beach scenery and four holiday seasons.

The complex is designed taking into account every detail, from the architecture to the carefully thought-out landscape. Each apartment, regardless of the type chosen, offers a unique Mediterranean view.

The variety of apartment types includes studio apartments, 1 and 2 bedroom apartments, and 3 bedroom penthouses.

All apartments provide sea and pool views.

Among the basic amenities in the apartments you will find elevators, video intercom system, central camera system, central satellite system, air conditioning infrastructure and luxury ceramics.

Additional amenities include a luxuriously equipped kitchen, wardrobes in all bedrooms, and PVC double glazing.

**The infrastructure of the complex** includes outdoor and indoor swimming pools, a water park, a fitness center, game rooms, a spa center, a Turkish bath, a sauna, a beauty salon, bars by the pool and on the terrace, restaurants and various areas for sports and recreation.

All the necessary amenities, such as a souvenir shop, market, ATM, maintenance services, recreation areas and 24-hour security, make the complex a complete and comfortable place to stay.

A flexible payment schedule makes purchasing real estate more affordable.

**Payment plan:**

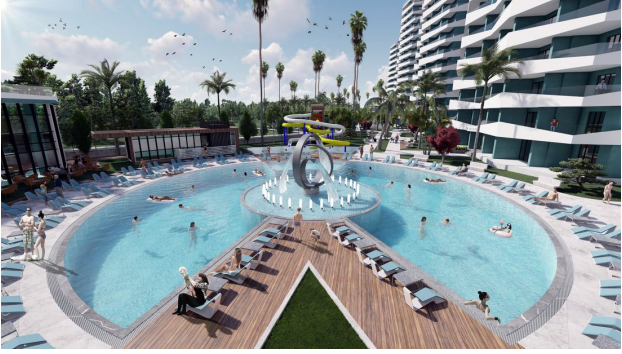
- 40% down payment
- 30% before handing over the keys
- 30% in installments 0% for 24 months after completion of construction

Construction completion date: 10.2024-04.2026 depending on the block.

**Information updated: 19.08.2024**

## **Photo gallery**











Scan the QR code to open the original page