


Apartment from an investor in a modern project on the main street of the Demirtas district (20500)



138 000 €

 Floor area **56 m²**

 Number of rooms **1 bedroom**

 Furnitures **Partly**

 To the beach: **210 m**

 Location: **Turkey, Alanya, Demirtash**

✈ To the airport: 17 km

🏙 To the city
centre: 23 km

Options

- ✓ Balcony/ Terrace
- ✓ Swimming pool
- ✓ Private territory
- ✓ 0% installment
- ✓ Security
- ✓ Elevator
- ✓ Playground
- ✓ Generator

Description

Apartment from an investor in a modern project, located just 210 meters from the sea, **on the main street of Demirtas.**

This location provides convenient transport links within the area and with the rest of Alanya.

The project includes 28 apartments of various layouts, distributed in 7 apartments on each floor.

Description of the apartment:

- 1+1
- area 55.5 m2
- 1st floor
- with a 50% down payment, **installments at 0% are possible**
- № 14

The price of the apartments includes fine finishing, a steel entrance door, air conditioning outlets, lighting, built-in kitchen furniture and fully equipped bathrooms.

The infrastructure of the complex includes an outdoor swimming pool with sun loungers, a cafeteria, a gym, a sauna, a steam room, a massage room, an outdoor parking lot and a closed area with landscape design.

Distances to various objects:

- To the beach - only 210 meters
- To the center of the district – 2.5 km
- To Gazipasa Airport – 17 km or 15-20 minutes by car
- Antalya Airport – 155 km
- Alanya center – 23 km
- Mahmutlar district – 14 km
- Kargicak district – 11 km
- The ancient city of Syedra is 9 km away
- Sapadere Canyon – 18 km

The advantages of the Demirtas area include a good location closer to Gazipasa airport, varied beaches, lack of dense buildings with views, privacy, tranquility and nature, as well as reasonable prices compared to other areas of Alanya.

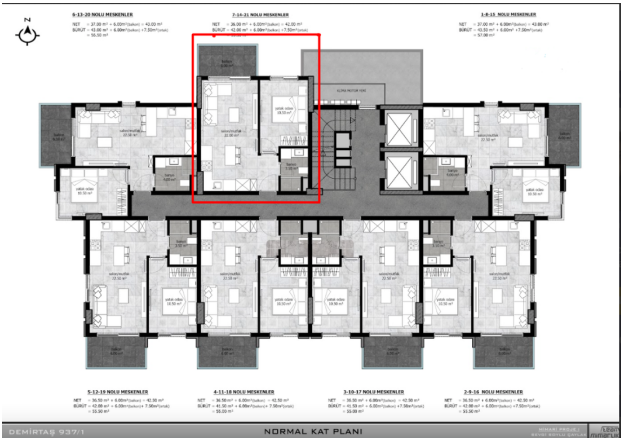
Construction start date: 09. 2023

Construction completion date: 12. 2024

Information updated: 04.12.2024

Photo gallery





DEMİRTAŞ 937.1

NORMAL KAT PLANI

1/500