

Unique residential complex in the center of Alsancak, Izmir (003132)



382 000 € - 1 373 000 €

🏠 Floor area **84 m² - 377 m²**

🏠 Number of rooms

- 1 bedroom**
- 2 bedrooms**
- 3 bedrooms**
- 4 bedrooms**
- 3+1 penthouse**

🏠 Furnitures **Partly**

 To the beach: **720 m**

 Location: **Turkey, Izmir**

 To the airport: **km**

 To the city centre: **km**

Options

- ✓ Sea view
- ✓ Balcony/ Terrace
- ✓ Swimming pool
- ✓ Private territory
- ✓ Security
- ✓ Elevator
- ✓ Playground
- ✓ Generator

Description

A magical project located in the heart of Alsancak, very close to transport hubs and a few steps from one of the largest private hospitals in Izmir - Medicana.

The combination of convenient location, variety of apartment layouts and extensive social infrastructure makes this complex attractive to a diverse audience.

Distance to the sea 720 meters.

Location and infrastructure:

- Ege University: 7.3 km
- Dokuz Eylul Hospital: 8.7 km

- Yaşar University: 5.5 km
- International Hospital Medicana: 500 m
- Private Hospital Ege City: 2.0 km
- Aegean University Hospital: 6.2 km
- Park of Culture: 2.0 km
- Alsancak Port: 2.0 km
- Adnan Menderes Airport: 18 km
- Alacati Cesme: 55 min
- Urla: 40 min
- Manisa: 30 min
- Aydin: 55 min
- Kusadasi: 1 hour

Social infrastructure:

- Outdoor and children's pools
- Cafeteria
- Closed parking
- Fitness, Pilates and yoga centers
- Spa and sauna
- Changing rooms for men and women
- Lobby and seating area
- Library
- Gaming
- Office
- 24/7 security and video surveillance

Equipment and amenities:

- Built-in household appliances
- VRV heating and cooling system
- Water and electricity meters
- Generator
- Indoor parking with automatic license plate reading system
- Terraces and private gardens
- Automatic watering system for terraces and public gardens

Safety:

- Surveillance cameras in public areas and at entrances
- Fire alarm and automatic fire extinguishing system
- Fire cabinets on every floor
- Security alarm, water and fire detectors, videophone in apartments

Apartment types:

- 1+1: 83 m2 gross
- 2+1: 164 m2 gross
- 3+1: 214 – 337 m2 gross
- 3+1 duplex
- 4+1: 280 m2 gross

Construction start date: 11.2022

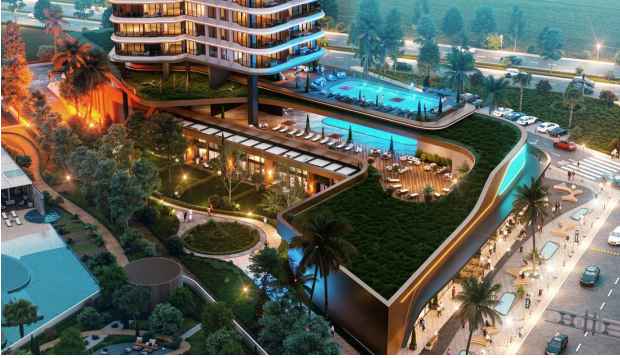
Construction completion date: 12.2023

Information updated: 25.06.2024

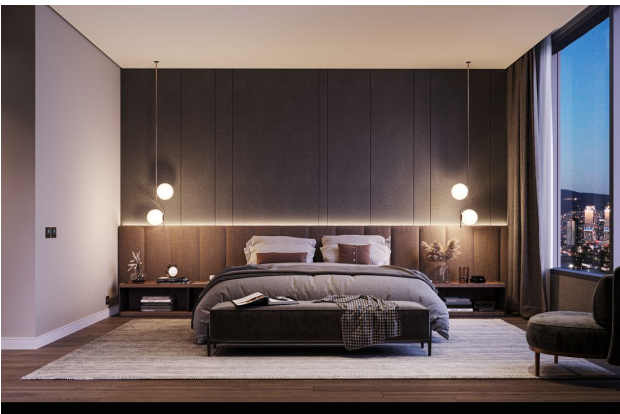
Photo gallery















Scan the QR code to open the original page