







# Luxury apartment on the Sibenik waterfront with garage (024280)



**1 200 000 €**

-  Floor area **147 m<sup>2</sup>**
-  Number of rooms **3 bedrooms**
-  Furnitures **Partly**
-  To the beach: **m**
-  Location: **Croatia, Dalmatia**
-  To the airport: **km**

 To the city  
centre:                      km

## Options

- ✓ Balcony/ Terrace
- ✓ Private territory
- ✓ Elevator

## Description

Luxury apartment on the Sibenik embankment with a garage.

### Apartment characteristics:

- Facility area: 147 m<sup>2</sup>
- Surface parking spaces: Garage parking
- Number of floors: Located on the ground floor
- Number of rooms: 3
- Number of bathrooms: 2+1

**Description:** We present to your attention a unique opportunity to become the owner of a luxury apartment located on the prestigious embankment of the city of Sibenik.

Conveniently located on the ground floor, the apartment provides spacious living space comprising three bedrooms. Two of them are equipped with private bathrooms with toilets, providing maximum comfort for residents. An additional toilet is convenient for guests.

The bright and stylish kitchen blends harmoniously with the cozy living room, creating the perfect place to relax and socialize. A chic loggia and garden provide excellent opportunities for relaxation and enjoying fresh air.

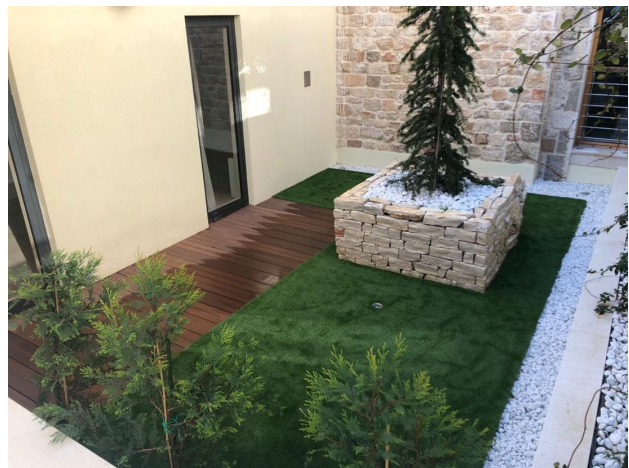
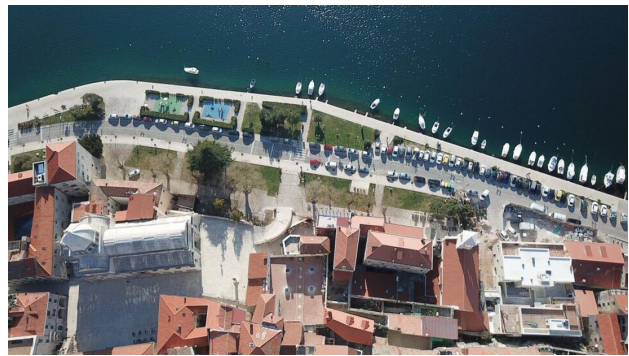
The apartment includes one garage space, providing convenient parking. The elevator from the garage leads directly to the apartment hallway.

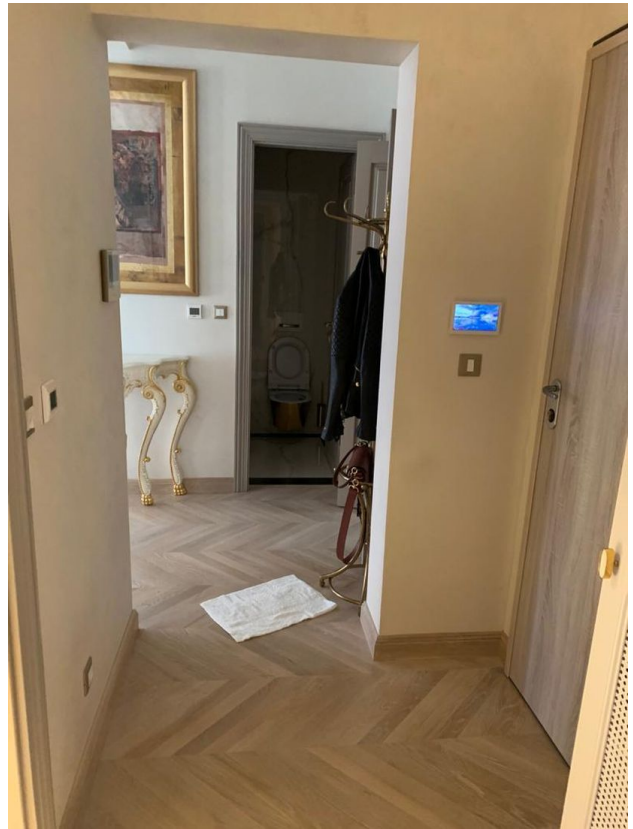
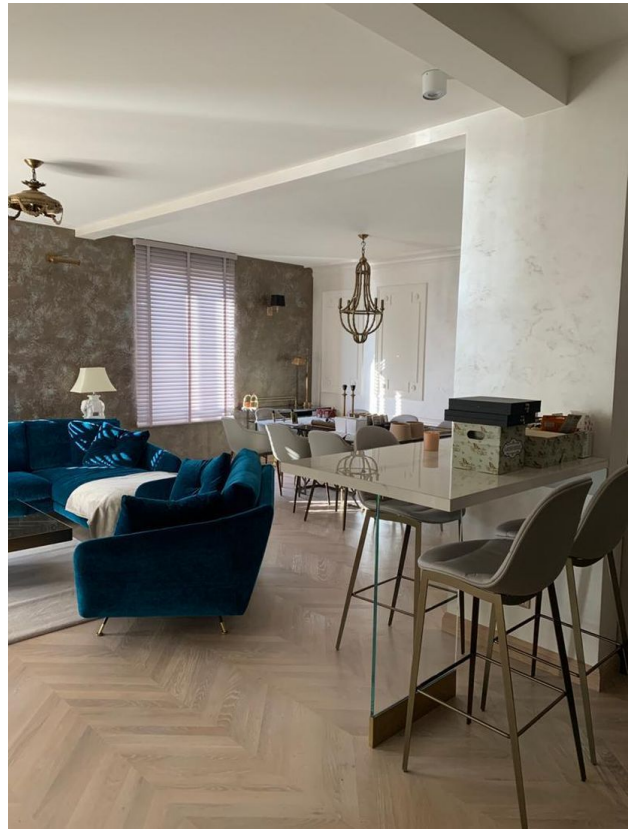
This apartment was completely renovated in 2020, providing the new owner with modern amenities and stylish design.

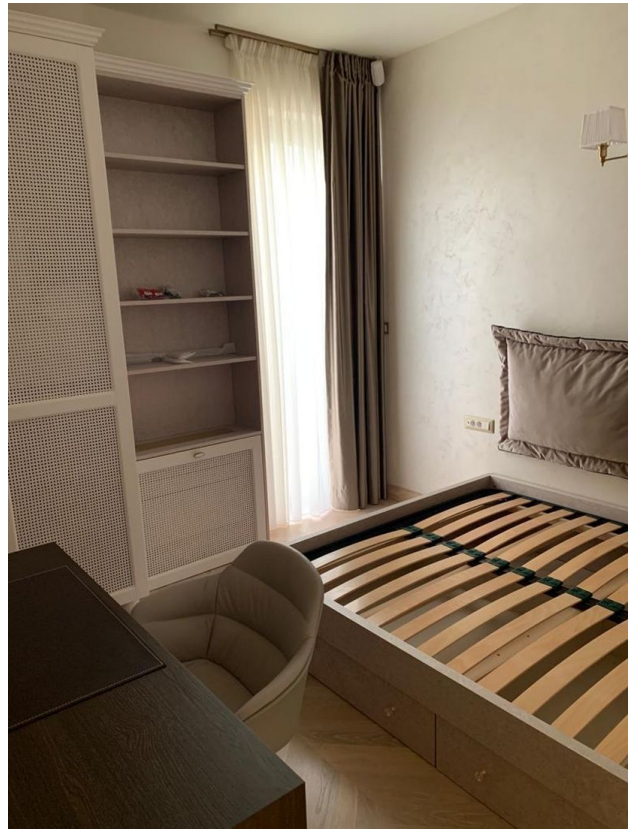
The sale price of this luxury apartment is 1,200,000 euros. This is an ideal offer for those looking for luxury accommodation in the beautiful city of Sibenik.

**Information updated: 11.01.2024**

## Photo gallery











Scan the QR code to open the original page