







Luxury real estate in Lapta with unique 2+1 penthouses and apartments (002314)



232 050 € - 313 600 €

-  Floor area **70 m² - 130 m²**
-  Number of rooms **2 bedrooms**
2+1 penthouse
-  Furnitures **Partly**
-  To the beach: **1000 m**
-  Location: **North Cyprus, Kyrenia**
-  To the airport: **km**

 To the city
centre: km

Options

- ✓ Balcony/ Terrace
- ✓ Swimming pool
- ✓ Private territory
- ✓ Outdoor parking
- ✓ 0% installment
- ✓ Security
- ✓ Garden
- ✓ Playground
- ✓ Generator

Description

Discover a unique world of comfort and luxury in a new boutique project.

This residential complex in the heart of Lapta features only 40 exclusive units:

- 20 **2+1 penthouses** with balconies and roof terrace equipped with built-in barbecue
- 20 **2+1 apartments** with garden on the ground floor

Penthouse characteristics:

- 60 m2 covered area + 8.8 m2 and 1.5 m2 balconies
- 60 m2 roof terrace with built-in barbecue
- Quartz kitchen countertop
- Air conditioning infrastructure for split systems
- Built-in wardrobes in bedrooms

Features of the apartment with garden:

- 70 m2 covered area
- 13.5 – 46.2 m2 personal garden + 13.5 m2 terrace
- Open kitchen
- Quartz kitchen countertop
- Air conditioning infrastructure for split systems
- Built-in wardrobes in bedrooms

Complex infrastructure:

- Communal swimming pool with children's section
- Parking
- 2 playgrounds
- Gym

Location:

- Kyrenia: 15 minutes
- Nicosia: 40 minutes
- Ercan Airport: 1 hour
- Lapta School: 6 minutes
- Necat British College: 9 minutes
- Lapta Yavuzlar High School: 5 minutes
- Lapta kindergarten: 3 minutes
- Lapta Health Clinic: 5 minutes
- Sandy beaches: 1 km (10 minutes walk)
- Arkin Creative Arts and Design University: 15 minutes
- American University of Girne: 10 minutes

There are more than 20 hotels, bars, restaurants, supermarkets and pharmacies within a 2 km radius.

This project provides an opportunity to enjoy city life without the fuss.

Terms of payment:

- **Down payment 35%:**

A down payment of 35% of the sale price is required. The remaining amount will be paid in equal installments until the apartment is delivered.

- **Down payment 50% – (5% discount applies):**

Customers who choose this payment option will receive a 5% discount. A down payment of 50% of the discounted sale price will be required. The remaining amount will be paid in equal installments until the apartment is delivered.

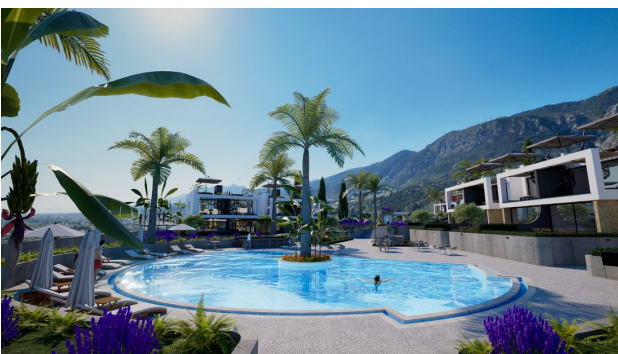
- **100% Down Payment – (10% discount applies):** Customers who choose this payment option will receive a 10% discount. The full sale price will be paid in advance.

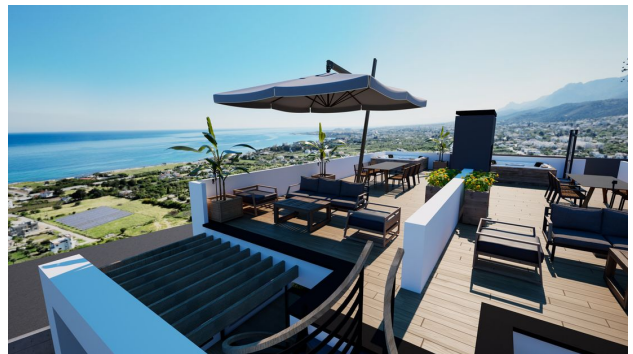
Start of construction - March 2024, completion - March 2026.

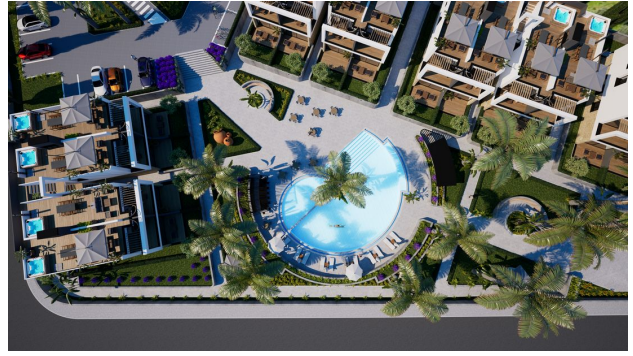
Reserve your piece of paradise now.

Information updated: 19.08.2024

Photo gallery









Scan the QR code to open the original page