

New premium project, in the middle of the sea and mountains, in the Tatlysu area (003314)



188 811 € - 641 026 €

🏠 Floor area **73 m² - 282 m²**

🏠 Number of rooms
1 bedroom
2 bedrooms
1+1 penthouse

🪑 Furnitures **Partly**

🌊 To the beach: **300 m**

 Location: **North Cyprus, Kyrenia**

 To the airport: **km**

 To the city
centre: **km**

Options

- ✓ Sea view
- ✓ Panoramic view
- ✓ Balcony/ Terrace
- ✓ Swimming pool
- ✓ Private territory
- ✓ Outdoor parking
- ✓ 0% installment
- ✓ Security
- ✓ Playground
- ✓ Generator

Description

Welcome to paradise on the Mediterranean coast: a new premium project in picturesque Tatlisu, Northern Cyprus!

Situated just 40 km east of Kyrenia, between the majestic Beshparmak mountains and the Mediterranean coast, this complex provides a unique opportunity to combine privacy with comfort and luxury.

Main advantages of the project:

- Seafront location: just steps from the crystal clear waters of the Mediterranean Sea.

- Wide selection of real estate: **1+1 apartments, loft apartments, 2+1 villas** with garden and landscape views.
- Luxury villas with private garden, roof terrace and BBQ facilities.
- Enjoy your own private infinity pool (selected villas).
- Beautiful views of the mountains and the Mediterranean Sea, sunrises and sunsets.

Distance to the sea 300 meters.

This modern complex provides all the necessary infrastructure for a comfortable life, and also provides easy access to the beach in Tatlysu.

Down payment 35%.

Construction start date: 08.2023

Construction completion date: 12.2025

Enjoy every moment in an oasis of peace and luxury.

Welcome to your new home, where your sea dreams will come true!

Information updated: 07.02.2025

Photo gallery

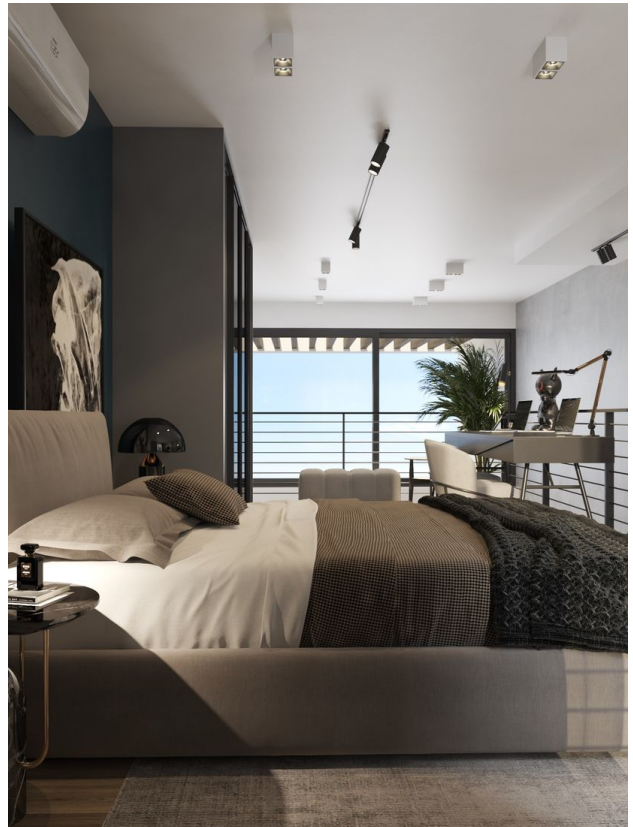
















Scan the QR code to open the original page