







Spacious villa under construction in the Finestrat area (176237)



750 000 €

-  Floor area **198 m²**
-  Number of rooms **3 bedrooms**
-  Furnitures **Partly**
-  To the beach: **m**
-  Location: **Spain, Аликанте**
-  To the airport: **km**
-  To the city centre: **km**

Options

- ✓ Balcony/ Terrace
- ✓ Swimming pool
- ✓ Private territory

Description

This villa is designed as a fully walkable space with internal and external routes allowing access to each floor independently.

It offers various views of the architectural complex and its surroundings against the backdrop of the sea and Sierra Cortina.

The main entrance to the villa is located at the bottom of the plot, with ample parking for two cars.

A water surface with sun loungers leads to the house on its first floor, which has wide walls covered with stone masonry. The living room opens onto the terrace thanks to a large sash window. Wooden shutters on stone walls provide semi-closed protection.

The property also features a private swimming pool with aquamarine tones and tiles, which sits next to wood-effect tiles to prevent slipping.

This space includes a barbecue area that can be adapted to suit the user's needs, with access from a paved area through the natural landscape.

Villa characteristics:

- Population: Finestrat
- Type: Villa
- Bedrooms: 3
- Bathrooms: 3
- Living rooms: 1
- Plot size: 564 m²

- Kitchen: American - furnished without appliances
- Usable area: 143 m2
- Total area: 198 m2
- Terrace: 73 m2
- Pool: private
- Air conditioner: ducted air conditioner
- Outdoor terrace: Yes
- Covered terrace: Yes
- Parking: Yes
- Double glazing: Yes
- Raw: Yes
- Security door: Yes
- Fenced area: Yes

This villa represents a unique combination of luxury, comfort and natural beauty, providing an ideal place to live or holiday.

Construction completion date: 2025

Information updated: 15.02.2024

Photo gallery



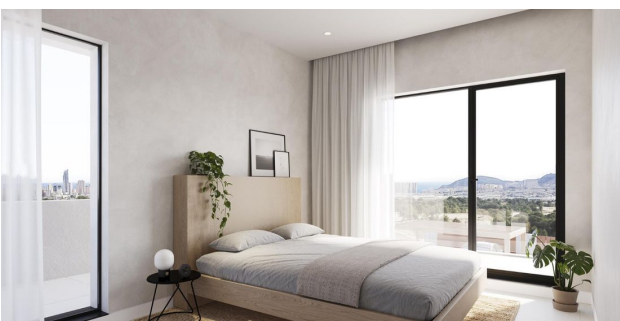
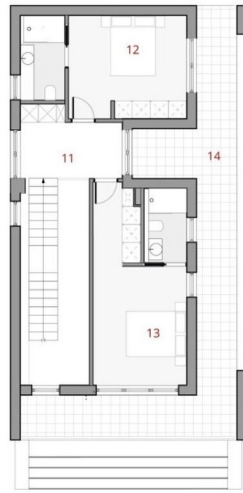


TABLE OF USEFUL SURFACES

11 Hall.....	7,43 m ²
12 Suite bedroom.....	17,74 m ²
13 Suite bedroom.....	20,57 m ²
14 Terrace.....	32,72 m ²

1st Floor USABLE AREA 51,07 m²
1st Floor TERRACE SURFACE 32,72 m²

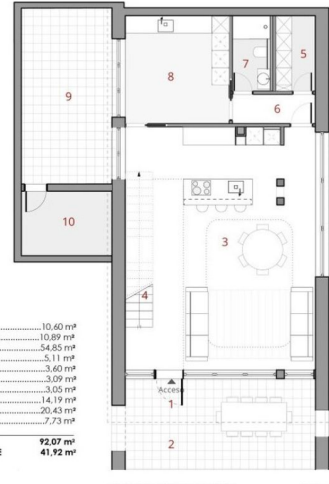


1st FLOOR HOUSE BUILT SURFACE 57,43 m²
 (TERRACES ARE NOT INCLUDED)

TABLE OF USEFUL SURFACES

01 Covered porch (50%).....	10,60 m ²
02 Open porch.....	10,89 m ²
03 Living-dining room-kitchen.....	34,65 m ²
04 Staircase in Ground floor.....	5,11 m ²
05 Pantry.....	3,60 m ²
06 Hall.....	3,09 m ²
07 Bathroom.....	3,05 m ²
08 Laundry room.....	14,19 m ²
09 Interior patio.....	20,43 m ²
10 Facilities area.....	7,73 m ²

Ground Floor USABLE AREA 92,07 m²
Ground floor TERRACE SURFACE 41,92 m²



GROUND FLOOR HOUSE BUILT SURFACE 108,10 m²
 (TERRACES ARE NOT INCLUDED)



Scan the QR code to open the original page