








Villa in a completely green area in Finestrat (177237)



1 050 000 €

-  Floor area **315 m²**
-  Number of rooms **4 bedrooms**
-  Furnitures **Partly**
-  To the beach: **m**
-  Location: **Spain, Аликанте**
-  To the airport: **km**
-  To the city centre: **km**

Options

- ✓ Balcony/ Terrace
- ✓ Swimming pool
- ✓ Private territory

Description

This new construction project is located in completely green areas, creating spatial harmony that blends perfectly with the surrounding nature.

The sea and Sierra Cortina, visible in the background, complement this integration, creating a unique atmosphere.

A side garden, decorated with beautiful cacti and white gravel, connects the entrance level to the main level, providing a harmonious transition between levels.

The use of natural grass throughout the rest of the property complements the overall concept through careful landscaping design.

Each level of the villa is highlighted with a material that enhances its character.

The ground floor is covered with natural limestone, which supports the entire structure.

The second floor uses monolayer and blinds, providing privacy in the most intimate part of the house.

Finally, the third floor, where the master bedroom is located, has a textured monolayer in warm tones and opens out to a large terrace.

Mediterranean aesthetics are achieved through the perfect combination of tradition, modern architecture and nature.

Villa characteristics:

- Territory: Finestrat

- Bedrooms: 4
- Bathrooms: 4
- Living rooms: 1
- Plot size: 620 m2
- Kitchen: American - furnished without appliances
- Usable area: 144 m2
- Total area: 315 m2
- Terrace: 47 m2
- Pool: private
- Air conditioner: ducted air conditioner
- Outdoor terrace: Yes
- Covered terrace: Yes
- Parking: Yes
- Security door: Yes
- Fenced area: Yes

This villa represents a unique combination of luxury, comfort and harmony with nature, providing an ideal place to live surrounded by beauty and tranquility.

Construction completion date: 2025

Information updated: 15.02.2024

Photo gallery



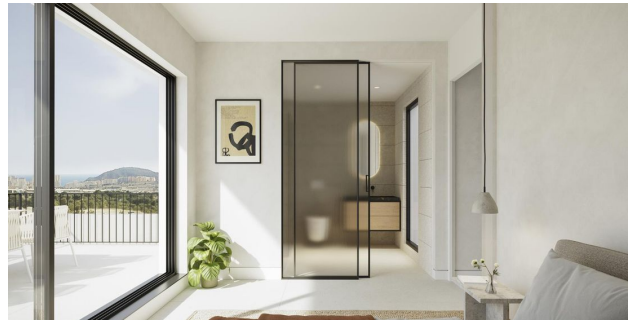
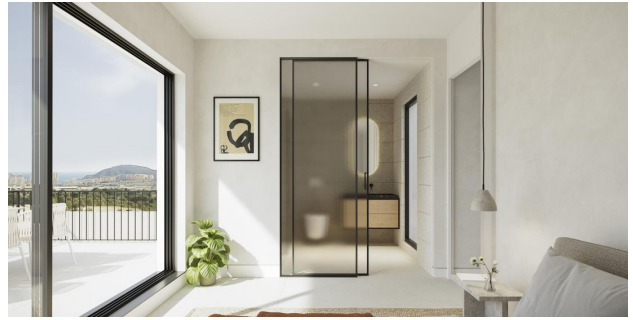
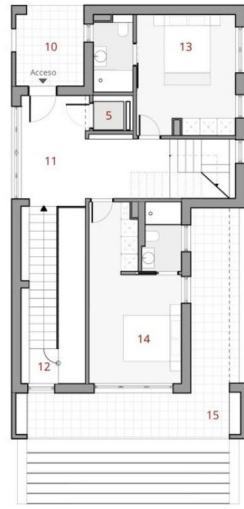


TABLE OF USEFUL SURFACES

10 Access porch.....	6,66 m²
11 Hall.....	16,72 m²
12 Stair 1.....	6,13 m²
13 Suite room 1.....	17,48 m²
14 Suite room 2.....	19,97 m²
15 Terrace.....	21,47 m²

1st Floor USABLE AREA 60,30 m²
1st Floor TERRACE SURFACE 28,13 m²



FIRST FLOOR HOUSE BUILT SURFACE 72,45 m²
(TERRACES ARE NOT INCLUDED)



Scan the QR code to open the original page