





Living apartment complex overlooking Layan Beach (138317)



108 226 €

-  Floor area **37 m²**
-  Number of rooms
 - Studio**
 - 1 bedroom**
 - 2 bedrooms**
 - 3 bedrooms**
-  Furnitures **Partly**
-  To the beach: **1500 m**

 Location: **Thailand, Phuket**

 To the airport: **km**

 To the city
centre: **km**

Options

- ✓ Sea view
- ✓ Mountain view
- ✓ Balcony/ Terrace
- ✓ Swimming pool
- ✓ Private territory
- ✓ 0% installment
- ✓ Security

Description

A unique residential complex just 1.5 km from Layan Beach.

Picturesque swimming pools, green islands on the territory and secluded pavilions create a unique atmosphere. Water space around, nature and modern comfort - in one place.

Object details

- Delivery: December 2026
- To the sea: 1.5 km
- Bedrooms: 1 - 4
- Bathrooms: 1 - 4
- Living area: 37 - 125 m²
- Income: actual rental income
- Installment plan: installment payments for the construction period

In the complex: the landscape of the central zone literally revolves around the swimming pool, designed for your complete relaxation.

He creates unique artistic spaces with green islands throughout, pavilions for relaxation and spaces with a unique atmosphere and design that is evident in the details of the exterior.

This complex is imbued with tropical island passion. A huge area for water activities, its own shopping street, an area with luxury villas - all this will make your holiday and stay in this complex unforgettable.

The pavilions, reminiscent of hermit crab beds, provide a secluded space with views of the mountains and sea.

In the apartments: The interior design is inspired by the unusual forms of nature: a reminder of an island in the sea, the rich color scheme creates an atmosphere of enthusiasm and vitality.

Feature: this project does not just offer apartments - it creates a lifestyle.

Indoor water space, commercial premises along the street, a picturesque garden with waterfalls, landscape architecture in the form of a green island in the water, a leisure area and a landscaped green space with villas are just a small part of what makes this complex unique.

The price includes: finishing, plumbing, built-in kitchen, built-in wardrobes, air conditioning.

The price does not include: furniture package.

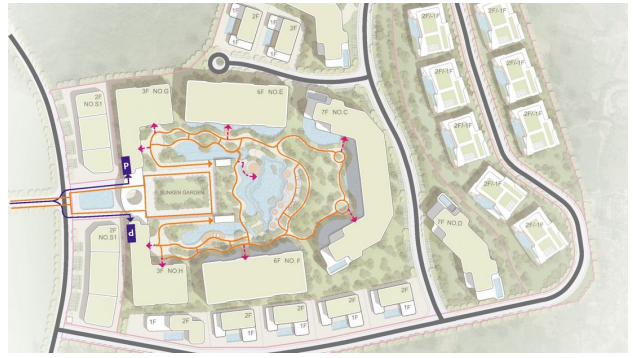
Location:

- Airport 25 min.
- Patong 48 min.
- Shopping center 20 min.
- Supermarket 9 min.
- Restaurants 4 min.
- Hospital 10 min.
- Golf club 8 min.
- Yacht club 28 min.

Information updated: 21.02.2024

Photo gallery







TYPE-F22
Plan-1

- 1 Livingroom
- 1 Kitchen
- 1 Diningroom
- 2 Bedrooms
- 2 Bathrooms

Internal 96.82m²
External 17.46m²
Total 114.28m²



TYPE-E

- 1 Livingroom
- 1 Kitchen
- 1 Diningroom
- 3 Bedrooms
- 4 Bathrooms

Internal 174.93m²
External 127.76m²
Total 302.69m²



TYPE-D

- 1 Livingroom
- 1 Kitchen
- 1 Diningroom
- 3 Bedrooms
- 2 Bathrooms

Internal 101.06m²
 External 23.74m²
Total 124.80m²



TYPE-C

- 1 Livingroom
- 1 Kitchen
- 1 Diningroom
- 2 Bedrooms
- 2 Bathrooms

Internal 69.00m²
 External 10.20m²
Total 79.20m²

户型设计 House Types Design



TYPE-B2

- 1 Livingroom
- 1 Kitchen
- 1 Diningroom
- 1 Bedroom
- 1 Bathroom

Internal 47.60m²
 External 10.20m²
Total 57.80m²



TYPE-B1

- 1 Livingroom
- 1 Kitchen
- 1 Bedroom
- 1 Bathroom

Internal 37.60m²
 External 6.00m²
Total 43.60m²



TYPE-A

- 1 Livingroom
- 1 Kitchen
- 1 Bedroom
- 1 Bathroom

Internal 32.80m²
 External 4.80m²
Total 37.60m²



Scan the QR code to open the original page