

Apartment in a residential complex under construction in picturesque Torrevieja (182237)



280 000 €

-  Floor area **92 m²**
-  Number of rooms **2 bedrooms**
-  Furnitures **Partly**
-  To the beach: **200 m**
-  Location: **Spain, Torrevieja**
-  To the airport: **km**

 To the city
centre: km

Options

- ✓ Sea view
- ✓ Balcony/ Terrace
- ✓ Swimming pool
- ✓ Private territory
- ✓ Security

Description

A beautiful new construction project just 200 meters walk from Los Locos beach, in the beautiful coastal town of Torrevieja, offering 2 bedroom apartments.

The apartments feature a modern open plan design with high quality fixtures and attention to detail such as en-suite bathrooms, large porcelain floors, sound absorbing windows, LED lighting and heated bathroom floors.

They are bright and spacious and all have a terrace where you can enjoy the wonderful Mediterranean sun.

This fantastic luxury development also offers residents a rooftop swimming pool, sauna and relaxation area with stunning sea views.

If desired, it is possible to purchase an underground parking space and a large storage room.

Additionally:

- Parking: from 30 000 €
- Pantry: from 4 200 €

Description of the apartment:

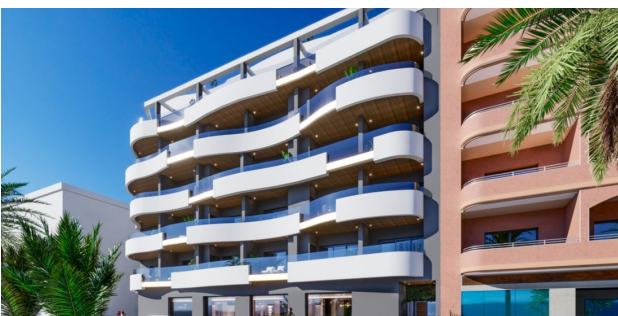
- Bedrooms: 2

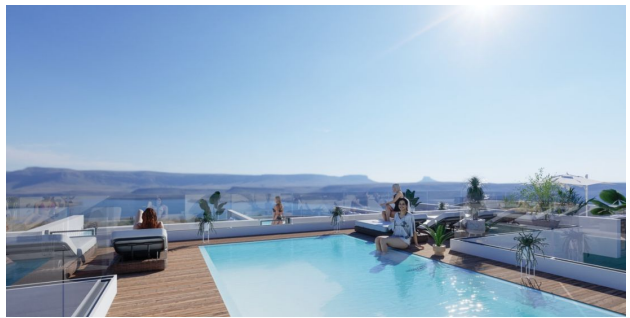
- City: Torrevieja
- Bathrooms: 2
- Living rooms: 1
- Kitchen: American - furnished without electricity.
- Usable area: 53 m²
- Built-up area: 92 m²
- Terrace: 10 m²
- Floor number: 1

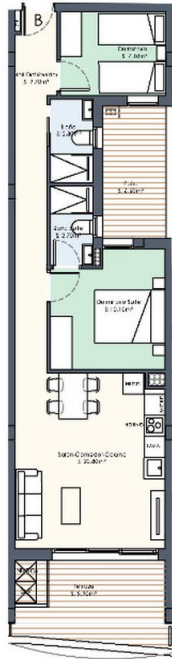
Year of construction: 2025.

Information updated: 07.03.2024

Photo gallery



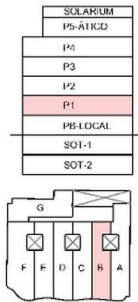




Vivienda B - 2 Dormitorios

SUP. ÚTIL	(m ²)
Hall Distribuidor	9,70
Dormitorio I	7,10
Baño I	2,80
Dormitorio Suite	10,10
Baño Suite	2,70
Salón Comedor Cocina	20,80
SUP. ÚTIL INTERIOR	53,20
Terraza I	9,90
Patio	6,60

SUP. CONST VIVIENDA	84,30
SUP. CONST TERRAZA	11,40
SUP. CONST PATIO	6,60
SUP. CONST ZCC	9,80
TOTAL VIVIENDA	92,10



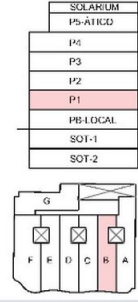
RESIDENCIAL



Vivienda B - 2 Dormitorios

SUP. ÚTIL	(m ²)
Hall Distribuidor	9,70
Dormitorio I	7,10
Baño I	2,80
Dormitorio Suite	10,10
Baño Suite	2,70
Salón Comedor Cocina	20,80
SUP. ÚTIL INTERIOR	53,20
Terraza I	9,90
Patio	6,60

SUP. CONST VIVIENDA	84,30
SUP. CONST TERRAZA	11,40
SUP. CONST PATIO	6,60
SUP. CONST ZCC	9,80
TOTAL VIVIENDA	92,10



RESIDENCIAL