







# Apartment in a residential complex under construction in picturesque Torrevieja (182237)



**280 000 €**

-  Floor area **92 m<sup>2</sup>**
-  Number of rooms **2 bedrooms**
-  Furnitures **Partly**
-  To the beach: **200 m**
-  Location: **Spain, Torrevieja**
-  To the airport: **km**

 To the city  
centre:                      km

## Options

- ✓ Sea view
- ✓ Balcony/ Terrace
- ✓ Swimming pool
- ✓ Private territory
- ✓ Security

## Description

A beautiful new construction project just 200 meters walk from Los Locos beach, in the beautiful coastal town of Torrevieja, offering 2 bedroom apartments.

The apartments feature a modern open plan design with high quality fixtures and attention to detail such as en-suite bathrooms, large porcelain floors, sound absorbing windows, LED lighting and heated bathroom floors.

They are bright and spacious and all have a terrace where you can enjoy the wonderful Mediterranean sun.

This fantastic luxury development also offers residents a rooftop swimming pool, sauna and relaxation area with stunning sea views.

If desired, it is possible to purchase an underground parking space and a large storage room.

### **Additionally:**

- Parking: from 30 000 €
- Pantry: from 4 200 €

### **Description of the apartment:**

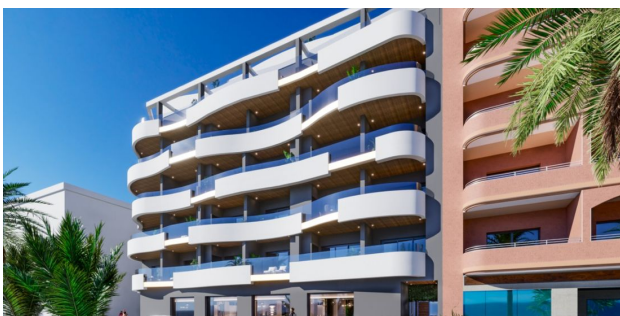
- Bedrooms: 2

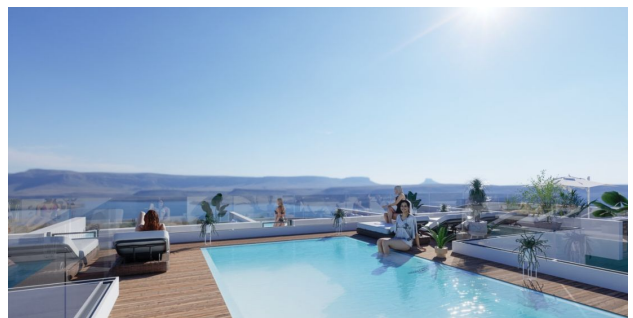
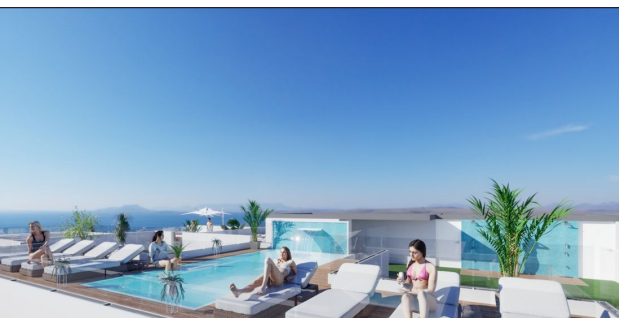
- City: Torrevieja
- Bathrooms: 2
- Living rooms: 1
- Kitchen: American - furnished without electricity.
- Usable area: 53 m2
- Built-up area: 92 m2
- Terrace: 10 m2
- Floor number: 1

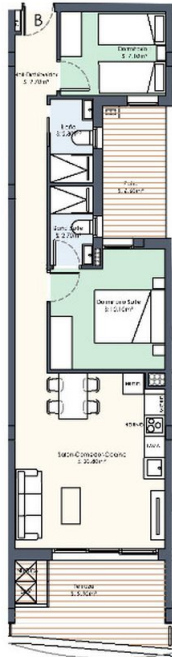
Year of construction: 2025.

**Information updated: 07.03.2024**

## Photo gallery



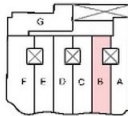
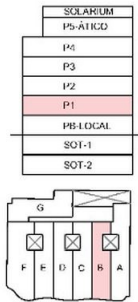




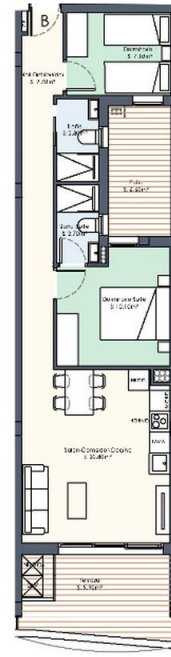
**Vivienda B - 2 Dormitorios**

| SUP. ÚTIL            | (m <sup>2</sup> ) |
|----------------------|-------------------|
| Hall Distribuidor    | 9,70              |
| Dormitorio I         | 7,10              |
| Baño I               | 2,80              |
| Dormitorio Suite     | 10,10             |
| Baño Suite           | 2,70              |
| Salón Comedor Cocina | 20,80             |
| SUP. ÚTIL INTERIOR   | 53,20             |
| Terraza I            | 9,90              |
| Patio                | 6,60              |

|                       |              |
|-----------------------|--------------|
| SUP. CONST VIVIENDA   | 84,30        |
| SUP. CONST TERRAZA    | 11,40        |
| SUP. CONST PATIO      | 6,60         |
| SUP. CONST ZCC        | 9,80         |
| <b>TOTAL VIVIENDA</b> | <b>92,10</b> |



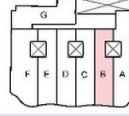
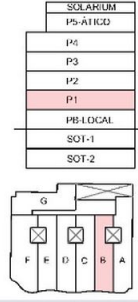
**RESIDENCIAL**



**Vivienda B - 2 Dormitorios**

| SUP. ÚTIL            | (m <sup>2</sup> ) |
|----------------------|-------------------|
| Hall Distribuidor    | 9,70              |
| Dormitorio I         | 7,10              |
| Baño I               | 2,80              |
| Dormitorio Suite     | 10,10             |
| Baño Suite           | 2,70              |
| Salón Comedor Cocina | 20,80             |
| SUP. ÚTIL INTERIOR   | 53,20             |
| Terraza I            | 9,90              |
| Patio                | 6,60              |

|                       |              |
|-----------------------|--------------|
| SUP. CONST VIVIENDA   | 84,30        |
| SUP. CONST TERRAZA    | 11,40        |
| SUP. CONST PATIO      | 6,60         |
| SUP. CONST ZCC        | 9,80         |
| <b>TOTAL VIVIENDA</b> | <b>92,10</b> |



**RESIDENCIAL**



Scan the QR code to open the original page