

New project of branded residences in one of the most prestigious corners of Bang Tao (002401)



308 200 € - 1 638 700 €

🏠 Floor area **75 m² - 313 m²**

🏠 Number of rooms
1 bedroom
2 bedrooms
3 bedrooms

🪑 Furnitures **Full**

🌊 To the beach: **1500 m**

 Location: **Thailand, Phuket**

 To the airport: **km**

 To the city
centre: **km**

Options

- ✓ Furniture
- ✓ Balcony/ Terrace
- ✓ Swimming pool
- ✓ Private territory
- ✓ Security
- ✓ Playground

Description

A new project of branded residences, ideally located in one of the most prestigious corners of Bangtao.

These luxury low-rise residences occupy a prime position in one of the best locations of the last few years, right next to Laguna Phuket and Boat Avenue, within walking distance to the beach.

The project is characterized by low building density, offering only 188 apartments in 6 buildings, each of which consists of 7 floors.

The apartments come in a wide range of sizes, ranging from spacious 1-bedroom apartments measuring 75m² to impressive duplexes measuring up to 313m².

Plans for sale:

- 1 bedroom
- 2 bedrooms

- 3 bedrooms

The residences are only part of a larger complex located on a plot of 2.72 hectares. In addition to the residences, the complex includes The Standard F&B and the Peri Peri Hotel, each of which offers its own cafes and restaurants available to residents.

Complex infrastructure:

- Fitness
- Reception
- Communal pool
- Spa
- Garden
- Conference hall
- Cinema
- Coworking
- Concierge
- Shuttle service
- Maid service
- Security
- Parking

All apartments are sold turnkey, with furniture made specifically for this project.

Please note that the project offers a fairly buyer-friendly payment schedule (especially by Phuket standards):

- 50% paid during construction
- 50% - upon delivery (usually 70-80% during construction and 20-30% upon delivery)

Owners will also receive special hotel bonuses:

- Exclusive discounts or free access to cultural events
- Discount on food and drinks at chain hotels within Thailand
- Discounts on rooms in chain hotels around the world

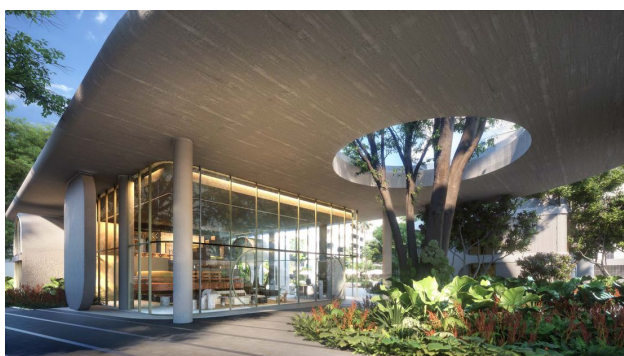
The following amenities and attractions are located in the immediate vicinity of the project:

- Boat Avenue - 100 m
- Laguna Phuket - 200 m
- Sunway Estates - 450 m
- Porto de Phuket - 600 m
- Bangtao Beach - 1500 m
- Blue Tree Waterpark - 5 min drive
- British International School - 20 min.
- UWC International School - 20 min.
- Phuket International Airport - 25 min.

Construction completion date: 4th quarter 2026

Information updated: 25.03.2024

Photo gallery







Scan the QR code to open the original page