

 Furnitures	<b>Partly</b>
 To the beach:	<b>m</b>
 Location:	<b>Thailand, Phuket</b>
 To the airport:	<b>km</b>
 To the city centre:	<b>km</b>

## Options

- ✓ Balcony/ Terrace
- ✓ Swimming pool
- ✓ Private territory
- ✓ Security

## Description

A unique premium villa project located in the prestigious Layan area of Phuket.

This project features eye-catching designs and impressive infrastructure, creating a luxurious space for your comfort and enjoyment.

The complex consists of 4 zones, each of which is named and designed according to one of the seasons to convey the atmosphere of each season.

Each season has different designs.

### Currently information about three zones:

- **Spring Zone:** Adopts a new Zen design, combining modern luxury and Zen landscaping.
- **Autumn zone** (Autumn): designed in the Modern Loft style, which has already proven itself and shown its popularity in previous Botanica projects.
- **Summer Zone:** represents the classic Thai-Balinese style (Signature Tropical Balinese).

The project will be deployed on a site with an area of more than 154 thousand m<sup>2</sup>, of which almost 10% is allocated for common areas and amenities.

Among other things, you will find extensive green areas, tennis courts, a gym and jogging tracks.

The complex is a gated community with 24-hour security, video surveillance and professional management.

**In the Spring zone** there are 30 villas with 3 bedrooms and a private pool, with a built-up area of 305 m<sup>2</sup>.

**The Autumn zone** includes 37 villas with 3 or 4 bedrooms and a private pool measuring 4 by 10 meters.

**The Summer zone** offers 72 villas with 3 or 4 bedrooms, the villas range from 370 to 590 m<sup>2</sup>.

#### **Complex infrastructure:**

- Security
- Parking
- Fitness
- Tennis court
- Treadmill

A significant portion of the project is dedicated to common green areas and amenities.

Excellent property management team which is key to the long term appeal of the villas.

The complex is located in the Pru Jampa area, next to Layan Beach. Layan is quickly becoming a very popular destination for luxury villas. With land availability decreasing in nearby Bang Tao, many new mid- to high-priced developments are moving here for the beautiful green scenery and easy access to all **of Phuket's best amenities:**

- Laguna Phuket - 10 minutes drive
- UWC International School - 12 minutes
- Phuket International Airport - 12 minutes
- Porto de Phuket (lifestyle-open air shopping center) - 15 minutes
- Boat Avenue (popular area with shops and restaurants) - 15 minutes



- Laguna Golf - 15 minutes
- Bang Tao Beach – 20 minutes
- Layan Beach – 15 minutes

This project is attractive to investors due to its high quality construction, variety of designs and on-site amenities.

With a convenient location in the Layan area, you will be able to enjoy all that Phuket has to offer, including beaches, restaurants, schools and shops, all just a short drive away.

**Information updated: 25.03.2024**

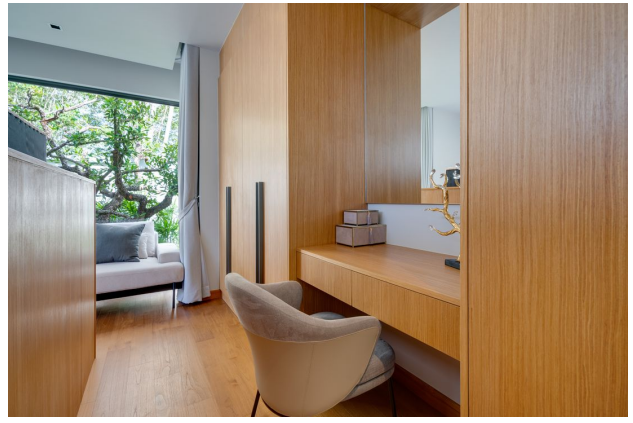
## Photo gallery













Scan the QR code to open the original page